



2017-2018  
ANNUALS ASSORTMENT

# Catalog

syngenta *flowers*®

# Table of Contents

● <b>TABLE OF CONTENTS</b> ..... 1	Rudbeckia ..... 65	Geranium – Interspecific..... 103
New & Improved..... 2	Salvia ..... 65	<b>Calliope® Geraniums</b> ..... 104
Seed Annuals ..... 3	Snapdragon..... 66	Geranium – Ivy..... 112
Vegetative Annuals ..... 4	Sunflower ..... 70	Geranium – Zonal..... 115
● <b>SEED ANNUALS</b> ..... 5–84	Torenia ..... 69	Heliotrope..... 119
Begonia ..... 5	Verbena..... 71	Impatiens..... 120
Cleome ..... 10	Vinca..... 75	Ipomoea ..... 121
Cuphea ..... 10	Viola..... 79	Lantana..... 122
Dahlia..... 11	Zinnia..... 82	Lobelia..... 126
Dianthus ..... 12	● <b>SPECIALTY SEED MIXES</b> ..... 85	Lysimachia ..... 125
Gazania..... 14	● <b>VEGETATIVE ANNUALS.. 87–148</b>	New Guinea Impatiens..... 129
Geranium..... 17	<b>Cutting Time™</b> ..... 87	Osteospermum ..... 133
Geranium – Ivy..... 21	Angelonia..... 91	Penstemon ..... 132
Gerbera..... 22	Argyranthemum ..... 92	Pentas..... 134
Impatiens..... 27	Asteriscus..... 92	Petunia ..... 136
Laurentia..... 31	Bacopa ..... 93	Salvia ..... 141
Marigold ..... 32	Bidens..... 93	Scaevola..... 141
New Guinea Impatiens..... 34	Calendula ..... 95	Verbena..... 142
Nicotiana ..... 35	Calibrachoa ..... 94	Vinca..... 148
Osteospermum ..... 35	Cuphea ..... 96	● <b>RESOURCES</b> ..... 149–158
<b>Pansies and Pre-Nova® 2.0</b> ... 36	Dahlia..... 96	Wholesale Broker List..... 149
Pansy..... 40	Diascia..... 99	Root ‘n’ Sells ..... 151
Pentas..... 51	Dipladenia ..... 100	Drops & Substitutions..... 153
Penstemon ..... 52	Dorotheanthus ..... 101	Ordering Information..... 156
Petunia ..... 53	Euphorbia..... 102	
Ranunculus ..... 63	Gaillardia ..... 102	

# 2017 – 2018 Annuals

# NEW VARIETIES

## SEED

### New Series

#### Sunflower

Sunfinity™ ..... 70

#### Verbena

Obsession™ Cascade..... 71

### New Color Additions

#### Geranium

Pinto™ Premium..... 19

Deep Scarlet

#### Pansy

Delta™ Premium..... 42

Yellow with Purple Wing Imp.

#### Petunia

Ramblin™ ..... 62

Sky Blue

Sugar Plum Imp.

TriTunia™ ..... 54

Pink Vein Imp.

Salmon Veined

#### Ranunculus

Maché™ ..... 63

Pink

Magic™ ..... 64

Chocolate

#### Verbena

Obsession™ ..... 72

Twister™ Purple

Twister™ Red

#### Vinca

Cora® Cascade ..... 75

Violet

#### Viola

Endurio® ..... 79

Yellow Imp.

Penny™ ..... 80

Yellow Jump-up Imp.

Black

## VEGETATIVE

### New Series

#### Calendula

Caleo™ ..... 95

#### Dahlia

Midaglio™ ..... 98

#### Petunia

Dekko™ ..... 136

### New Color Additions

#### Argyranthemum

Sassy® ..... 92

Double Deep Rose

Rose

White

#### Asteriscus

Aurelia™ ..... 92

Yellow

#### Calibrachoa

Callie® ..... 94

Dark Red

Orange Sunrise Imp.

Pink Morn

Purple Imp.

White Imp.

Yellow Imp.

#### Dahlia

Grandalia™ ..... 97

Dark Pink

#### Geranium – Interspecific

Caliente® ..... 103

Magenta

White

Calliope® Large..... 108

Magenta

Salmon

Calliope® Medium..... 110

Burgundy

Deep Rose

Red

Violet

White

#### Geranium – Ivy

Contessa™ ..... 113

Dark Red

Hot Pink

Temprano™ ..... 114

Hot Coral

White Imp.

#### Geranium – Zonal

Tango™ ..... 118

Bicolor Cherry

#### Ipomoea

Sidekick™ ..... 121

Lime Imp.

#### Lantana

Bandana® ..... 122

Yellow

Bandito™ ..... 125

Lemon Zest

#### Lobelia

Techno® Heat Upright..... 128

Delft Blue

Light Blue Imp.

#### New Guinea Impatiens

Sonic® ..... 129

Deep Purple Imp.

White Imp.

Super Sonic® ..... 131

Dark Red

Deep Salmon

Deep Scarlet

#### Osteospermum

Tradewinds® ..... 133

Terracotta Imp.

White Imp.

Yellow Imp.

#### Pentas

Falling Star™ ..... 134

Hot Pink

Red

Starcluster™ ..... 135

Appleblossom

Pink

Violet

#### Petunia

Sanguna® ..... 138

Blue Imp.

Hot Rose

Lipstick Imp.

Purple Imp.

Sweet Pink

White Vein

Yellow

#### Scaevola

Bombay® ..... 141

Dark Blue Imp.

Pink Imp.

White Imp.

#### Verbena

Lanai® ..... 142

Neon Rose

Pink

Lanai® Compact..... 145

White

Lanai® Upright..... 147

Limoncello

Twister™ Purple

Twister™ Red

# Seed Annuals

● <b>BEGONIA</b>		● <b>MARIGOLD</b>		● <b>RANUNCULUS</b>	
Bada Bing®/ Bada Boom® .....5		Antigua™ .....32		Mache™ .....63	
Braveheart® .....9		Inca II™ .....32		Magic™ .....64	
Eureka™ .....8		Moonstruck® .....33		● <b>RUDBECKIA</b>	
Go-Go™ .....9		Perfection™ .....33		TigerEye™ .....65	
Topspin™ .....6		● <b>NEW GUINEA IMPATIENS</b>		● <b>SALVIA</b>	
Volumia™ .....8		Florific™ .....34		Salsa® .....65	
● <b>CLEOME</b>		● <b>NICOTIANA</b>		● <b>SNAPDRAGON</b>	
Sparkler™ .....10		Saratoga™ .....35		Liberty Classic™ .....66	
● <b>CUPHEA</b>		● <b>OSTEOSPERMUM</b>		Madame Butterfly™ .....66	
Sriracha™ .....10		Asti™ .....35		Montego™ .....67	
● <b>DAHLIA</b>		● <b>PANSY</b>		Snaptastic™ .....68	
Fresco™ .....11		Colossus™ .....40		● <b>SUNFLOWER</b>	
Harlequin™ .....11		Delta™ .....46		Sunfinity™ .....70	
● <b>DIANTHUS</b>		Delta™ Premium .....42		● <b>TORENIA</b>	
Diabunda™ .....13		Karma™ .....48		Duchess™ .....69	
Super Parfait™ .....12		Mammoth™ .....49		● <b>VERBENA</b>	
Venti Parfait™ .....12		WonderFall™ .....50		Obsession™ .....72	
● <b>GAZANIA</b>		● <b>PENSTEMON</b>		Obsession™ Cascade.....71	
Big Kiss™ .....14		Arabesque™ .....52		Tuscany™ .....74	
Frosty Kiss™ .....16		● <b>PENTAS</b>		● <b>VINCA</b>	
Gazoo™ .....14		BeeBright™ .....51		Cora® .....76	
Kiss™ .....15		HoneyCluster™ .....52		Cora® Cascade.....75	
● <b>GERANIUM</b>		● <b>PETUNIA</b>		SunStorm® .....78	
BullsEye™ .....17		Damask™ .....58		● <b>VIOLA</b>	
Maverick™ .....18		Duvet™ .....53		Endurio® .....79	
Multibloom™ .....17		Frost™ .....56		Penny™ .....80	
Pinto™ Premium .....19		Hurrah™ .....60		● <b>ZINNIA</b>	
Ringo 2000™ .....20		Picobella™ .....57		Magellan™ .....83	
● <b>GERANIUM – IVY</b>		Picobella™ Cascade.....56		Short Stuff™ .....84	
Tornado™ .....21		Plush® .....61		Swizzle™ .....82	
● <b>GERBERA</b>		Ramblin™ .....62		Uproar™ .....83	
Bengal™ .....22		TriTunia™ .....54		Zowie!™ .....84	
Cartwheel™ .....26					
Elephant™ .....26					
Jaguar™ .....24					
● <b>IMPATIENS</b>					
Accent™ .....27					
Accent™ Premium .....28					
Tumbler™ .....29					
Xtreme™ .....30					
● <b>LAURENTIA</b>					
Starshine™ .....31					



Award Winner



New



Drought Tolerant



Pollinator Friendly



Heat Lover



Shade



Improved



Top Seller

# Vegetative Annuals

- **ANGELONIA**
  - Carita™ .....91
  - Carita™ Cascade .....91
- **ARGYRANTHEMUM**
  - Sassy® .....92
- **ASTERISCUS**
  - Aurelia™ .....92
- **BACOPA**
  - Calypso™ .....93
- **BIDENS**
  - Mexican Gold™ .....93
- **CALENDULA**
  - Caleo™ .....95
- **CALIBRACHOA**
  - Callie® .....94
- **CUPHEA**
  - Cuphoric™ .....96
- **DAHLIA**
  - Goldalia™ .....96
  - Grandalia™ .....97
  - Midaglio™ .....98
- **DIASCIA**
  - Darla® .....99
- **DIPLADENIA**
  - Madinia™ .....100
- **DOROTHEANTHUS**
  - Mezoo™ .....101
- **EUPHORBIA**
  - Euphoric™ .....102
- **GAILLARDIA**
  - Sunrita® .....102
- **GERANIUM – INTERSPECIFIC**
  - Caliente® .....103
  - Calliope® Medium .....110
  - Calliope® Large .....108
- **GERANIUM – IVY**
  - Blizzard® .....112
  - Cascade .....112
  - Contessa™ .....113
  - Freestyle® .....114
  - Temprano™ .....114

- **GERANIUM – ZONAL**
  - Americana® .....116
  - Classic™ .....115
  - Fidelity® .....115
  - Rocky Mountain™ .....117
  - Tango™ .....118
- **HELIOTROPE**
  - Scentropia™ .....119
- **IMPATIENS**
  - Silhouette® .....120
- **IPOMOEA**
  - Sidekick™ .....121
- **LANTANA**
  - Bandana® .....122
  - Bandito™ .....125
  - Landscape Bandana® .....124
- **LOBELIA**
  - Techno® .....126
  - Techno® Heat Upright .....128
- **LYSIMACHIA**
  - Goldii .....125
- **NEW GUINEA IMPATIENS**
  - Sonic® .....129
  - Super Sonic® .....131
- **OSTEOSPERMUM**
  - Tradewinds® .....133
- **PENSTEMON**
  - Phoenix™ .....132
- **PENTAS**
  - Falling Star™ .....134
  - Starcluster™ .....135

- **PETUNIA**
  - Dekko™ .....136
  - Sanguna® .....138
  - Sanguna® Patio .....140
- **SALVIA**
  - Velocity™ .....141
- **SCAEVOLA**
  - Bombay® .....141
- **VERBENA**
  - Lanai® .....142
  - Lanai® Compact .....145
  - Lanai® Premium .....146
  - Lanai® Upright .....147
  - Magelana™ .....148
- **VINCA**
  - Nirvana® Cascade .....148

-  Award Winner
-  New
-  Drought Tolerant
-  Pollinator Friendly
-  Heat Lover
-  Shade
-  Improved
-  Top Seller

Snaptastic™ Magenta Snapdragon

# Seed Annuals

## Bada Bing®/ Bada Boom®

BEGONIA SEMPERFLORENS



- The best choice for high-density growing due to its earliness and narrow blooming window
- Extremely uniform for quick turns and bench-run production
- Strong germination and superior seedling vigor allow growers to single sow with confidence
- Well-matched green leaf Bada Bing and bronze leaf Bada Boom make a complete series

### Specifications

Height	8–10"
Width	6–8"
Habit	Mounded
USDA Zone	10–11
AHS Heat Zone	12–1
Forms Available	Raw, Pellets

### Recommended Containers

SIZE	PPP	FINISH TIME
Packs	1	4–5 weeks
1 pt	1	5–6 weeks
1 qt	1–2	5–6 weeks
1.25 qt	3	5–7 weeks
1.5 gal HB	5–6	7–8 weeks

Plug crop time is 7–8 weeks depending on temperature, light level, plug size, and growing conditions.



Bada Bing® Pink  
70018251



Bada Bing® Rose  
70018249



Bada Bing® Rose Bicolor  
70018269



Bada Bing® Scarlet  
70002618



Bada Bing® White  
70040712



Bada Boom® Pink  
70018245



Bada Boom® Rose  
70040718



Bada Boom® Rose Bicolor  
70018271



Bada Boom® Scarlet  
70018246



Bada Boom® White  
70018259



Bada Bing® Mix  
70018267



Bada Boom® Mix  
70018268

## Topspin™

BEGONIA SEMPERFLORENS



- The best performing Begonia for cold finishing
- No special heating production zones means you can grow it with other bedding annuals in the same greenhouse at the same temperature
- Strong vigor — easy to size up plants under any environment
- Reliable and quick pot fill for jump-starting the earliest of spring turns



### Specifications

<b>Height</b>	8–10"
<b>Width</b>	8–10"
<b>Habit</b>	Mounded
<b>USDA Zone</b>	10–11
<b>AHS Heat Zone</b>	12–1
<b>Forms Available</b>	Raw, Pellets

### Recommended Containers

SIZE	PPP	FINISH TIME
<b>Packs</b>	1	4–5 weeks
<b>1 pt</b>	1	5–6 weeks
<b>1 qt</b>	1–2	5–6 weeks
<b>1.25 qt</b>	3	5–7 weeks
<b>2.5 qt</b>	3	5–7 weeks
<b>1.5 gal HB</b>	5–6	7–8 weeks

Plug crop time is 7–8 weeks depending on temperature, light level, plug size, and growing conditions.



# BEGONIA



Topspin™ Pink  
70054592



Topspin™ Rose  
70058992



Topspin™ Scarlet  
70054594



Topspin™ White  
70048975



Topspin™ Mix  
70069588



# BEGONIA

## Eureka™

BEGONIA SEMPERFLORENS



- Strike it big with built-in heat tolerance for easy finish for mid-late season sales, free-flowering beauty all season long, and foliage that holds its color in the heat
- Exhibits strong plant vigor and branching for fast container fill and outstanding landscape performance
- Full assortment of well-matched green and dark bronze leafed varieties

### Specifications

<b>Height</b>	9–12"
<b>Width</b>	7–9"
<b>Habit</b>	Mounded
<b>USDA Zone</b>	10–11
<b>AHS Heat Zone</b>	12–1
<b>Forms Available</b>	Raw, Pellets

### Recommended Containers

SIZE	PPP	FINISH TIME
<b>Packs</b>	1	5–6 weeks
<b>1 pt</b>	1	6–7 weeks
<b>1 qt</b>	1–2	6–7 weeks
<b>1.25 qt</b>	3	6–8 weeks
<b>2.5 qt</b>	3	6–8 weeks
<b>1.5 gal HB</b>	5–6	8–9 weeks

Plug crop time is 7–8 weeks depending on temperature, light level, plug size, and growing conditions.



Eureka™ Bronze Pink  
70001153



Eureka™ Bronze Rose  
70001156



Eureka™ Bronze Scarlet  
70018255



Eureka™ Bronze White  
70001155



Eureka™ Green Leaf Pink  
70001157



Eureka™ Green Leaf Rose  
70001160



Eureka™ Green Leaf Scarlet  
70003236



Eureka™ Green Leaf White  
70001166

## Volumia™

BEGONIA SEMPERFLORENS



- The name says it all! Voluminous habit and extra-large flowers for versatile applications
- Va-va-voom! More vigorous than Bada or Eureka, these vivacious varieties offer voluptuous plants with vivid color for a vast range of conditions
- Early enough for quick turns with the necessary vigor to achieve maximum impact in pots and landscape

### Specifications

<b>Height</b>	12–14"
<b>Width</b>	12–14"
<b>Habit</b>	Mounded
<b>USDA Zone</b>	10–11
<b>AHS Heat Zone</b>	12–1
<b>Forms Available</b>	Pellets

### Recommended Containers

SIZE	PPP	FINISH TIME
<b>Packs</b>	1	4–5 weeks
<b>1 pt</b>	1	5–6 weeks
<b>1 qt</b>	1	5–6 weeks
<b>1.25 qt</b>	2–3	5–7 weeks
<b>2.5 qt</b>	2–3	5–7 weeks
<b>1.5 gal HB</b>	5–6	7–8 weeks

Plug crop time is 7–8 weeks depending on temperature, light level, plug size, and growing conditions.



Volumia™ Pink  
70001167



Volumia™ Rose Bicolor  
70001169



Volumia™ Scarlet  
70001168



Volumia™ White  
70001170

# BEGONIA

## Go-Go™

BEGONIA TUBERHYBRIDA



- Tight habit, smaller leaves and shorter peduncles allow for fuss-free shipping and merchandising
- Beautiful abundant blooms create a stunning plant for superior sell-through at retail
- Requiring fewer growth regulators than competing varieties it is ideal finishing in a 1 pt. pot, yet vigorous enough for hanging baskets
- Recommend Go-Go for long lasting garden performance



Go-Go™ Orange  
70008039



Go-Go™ Red  
70008040



Go-Go™ Rose  
70008041



Go-Go™ Rose Bicolor  
70041208



Go-Go™ Scarlet  
70008043



Go-Go™ White  
70008044



Go-Go™ Yellow  
70035952



Go-Go™ Mix  
70008238

### Specifications

<b>Height</b>	8–10"
<b>Width</b>	8–10"
<b>Habit</b>	Mounded
<b>USDA Zone</b>	10–11
<b>AHS Heat Zone</b>	12–1
<b>Forms Available</b>	Pellets

### Recommended Containers

SIZE	PPP	FINISH TIME
<b>1 pt</b>	1	8–10 weeks
<b>1 qt</b>	1	10–12 weeks
<b>1.25 qt</b>	1–2	10–12 weeks
<b>2.5 qt</b>	1–2	10–12 weeks
<b>1.5 gal HB</b>	3–5	11–13 weeks

Plug crop time is 7–8 weeks depending on temperature, light level, plug size, and growing conditions.

## Braveheart®

BEGONIA × HYBRIDA



- Not your typical Begonia, an enchanting bicolored hybrid that excels in landscape performance
- Large, showy plants need little maintenance and continue flowering through periods of water stress
- Flowers early for faster finish in large premium pots, combinations, and baskets



Braveheart® Rose Bicolor  
70001138

### Specifications

<b>Height</b>	22–24"
<b>Width</b>	22–24"
<b>Habit</b>	Mounded
<b>USDA Zone</b>	11–11
<b>AHS Heat Zone</b>	12–1
<b>Forms Available</b>	Pellets

### Recommended Containers

SIZE	PPP	FINISH TIME
<b>1 pt</b>	1	5–6 weeks
<b>1 qt</b>	1	5–7 weeks
<b>1.25 qt</b>	2–3	5–7 weeks
<b>2.5 qt</b>	2–3	5–7 weeks
<b>1.5 gal HB</b>	3–4	7–8 weeks

Plug crop time is 7–8 weeks depending on temperature, light level, plug size, and growing conditions.

# CLEOME

## Sparkler™

CLEOME HASSLERIANA



- Ideal heat lover for premium season-extender programs
- F1 hybrid vigor and uniformity offer easy production and superior landscape performance
- Intriguing blooms and bushy plant habits grab attention at retail

### Specifications

<b>Height</b>	42–48"
<b>Width</b>	24–36"
<b>Habit</b>	Upright
<b>USDA Zone</b>	10–11
<b>AHS Heat Zone</b>	12–1
<b>Forms Available</b>	Primed

### Recommended Containers

SIZE	PPP	FINISH TIME
<b>1.25 qt</b>	1–2	10–12 weeks
<b>2.5 qt</b>	1–2	10–12 weeks

Plug crop time is 3–4 weeks depending on temperature, light level, plug size, and growing conditions.



Sparkler™ Blush  
70006560



Sparkler™ Lavender  
70018910



Sparkler™ Rose  
70006561



Sparkler™ White  
70002676



Sparkler™ Mix  
70018911

## Sriracha™

CUPHEA LLAVEA



- A premium heat and drought tolerant variety that offers season-extending opportunities for summer sales
- Compact, well branched plants come in three vibrant colors that are very well matched for uniform production
- Easy to program and a faster, cost effective alternative to specialty vegetative varieties

### Specifications

<b>Height</b>	14–18"
<b>Width</b>	12–14"
<b>Habit</b>	Upright
<b>USDA Zone</b>	9–11
<b>AHS Heat Zone</b>	12–1
<b>Forms Available</b>	Raw

### Recommended Containers

SIZE	PPP	FINISH TIME
<b>1 qt</b>	1	8–9 weeks
<b>1.25 qt</b>	1	8–9 weeks
<b>2.5 qt</b>	2	8–9 weeks
<b>3 qt</b>	3	8–9 weeks

Plug crop time is 3–4 weeks depending on temperature, light level, plug size, and growing conditions.



Sriracha™ Pink  
70036329



Sriracha™ Rose  
70036330



Sriracha™ Violet  
70036333

## Fresco™

DAHLIA HYBRIDA



Fresco™ Mix  
70001039

- A compact garden Dahlia, loaded with fully double blooms
- Uniform in height, habit and timing
- Brilliantly colored mixture

### Specifications

<b>Height</b>	10–12"
<b>Width</b>	7–9"
<b>Habit</b>	Upright
<b>USDA Zone</b>	8–10
<b>AHS Heat Zone</b>	12–3
<b>Forms Available</b>	Raw, SatinCoat™

### Recommended Containers

SIZE	PPP	FINISH TIME
<b>1 pt</b>	1	6–8 weeks
<b>1 qt</b>	1	6–8 weeks

Plug crop time is 3–4 weeks depending on temperature, light level, plug size, and growing conditions.

## Harlequin™

DAHLIA HYBRIDA



Harlequin™ Mix  
70001040

- Whimsical, semi-double bicolor mixture is sure to delight at retail or in the garden
- Early to bloom, uniform and well branched habits

### Specifications

<b>Height</b>	12–14"
<b>Width</b>	7–9"
<b>Habit</b>	Upright
<b>USDA Zone</b>	8–10
<b>AHS Heat Zone</b>	12–3
<b>Forms Available</b>	Raw, SatinCoat™

### Recommended Containers

SIZE	PPP	FINISH TIME
<b>1 pt</b>	1	6–7 weeks
<b>1 qt</b>	1	6–7 weeks

Plug crop time is 3–4 weeks depending on temperature, light level, plug size, and growing conditions.

# DIANTHUS

## Super Parfait™

DIANTHUS CHINENSIS

- Large, showy bicolor flowers drive early spring retail traffic
- Economical to produce – adaptable to high-density production and requires minimal heating inputs
- Well branched and vigorous growing in the garden for season-extended color

### Specifications

<b>Height</b>	6–8"
<b>Width</b>	8–10"
<b>Habit</b>	Mounded
<b>USDA Zone</b>	5–11
<b>AHS Heat Zone</b>	9–1
<b>Forms Available</b>	Raw, Pellets

### Recommended Containers

SIZE	PPP	FINISH TIME
<b>Packs</b>	1	9–11 weeks
<b>1 pt</b>	1	9–11 weeks
<b>1 qt</b>	1–2	10–12 weeks
<b>1.25 qt</b>	3	10–12 weeks
<b>2.5 qt</b>	3	10–12 weeks

Plug crop time is 5–6 weeks depending on temperature, light level, plug size, and growing conditions.



Super Parfait™ Raspberry  
70002705



Super Parfait™ Red Peppermint  
70019271



Super Parfait™ Strawberry  
70002706



Super Parfait™ Mix  
70019285

## Venti Parfait™

DIANTHUS CHINENSIS

- The next generation of Super Parfait Dianthus, with mega-sized, showy blooms on extra branching plants
- Greater plant vigor easily fills retail-ready containers and provides extended garden color

### Specifications

<b>Height</b>	8–10"
<b>Width</b>	8–10"
<b>Habit</b>	Mounded
<b>USDA Zone</b>	5–11
<b>AHS Heat Zone</b>	9–1
<b>Forms Available</b>	Raw, Pellets

### Recommended Containers

SIZE	PPP	FINISH TIME
<b>Packs</b>	1	9–11 weeks
<b>1 pt</b>	1	9–11 weeks
<b>1 qt</b>	1–2	10–12 weeks
<b>1.25 qt</b>	3	10–12 weeks
<b>2.5 qt</b>	3	10–12 weeks

Plug crop time is 5–6 weeks depending on temperature, light level, plug size, and growing conditions.



Venti Parfait™ Crimson  
70038525



Venti Parfait™ Crimson Eye  
70027330

## Diabunda™

DIANTHUS × BARBATUS

- A compact Sweet William type that is programmable with uniform habits and timing for easy, efficient production
- Faster and easier to flower for early-spring and fall sales compared to traditional Dianthus barbatus
- Striking colors, including bicolors make these familiar flowers a hit at retail

### Specifications

<b>Height</b>	8–10"
<b>Width</b>	8–10"
<b>Habit</b>	Mounded
<b>USDA Zone</b>	5–11
<b>AHS Heat Zone</b>	9–1
<b>Forms Available</b>	Raw, Pellets

### Recommended Containers

SIZE	PPP	FINISH TIME
<b>Packs</b>	1	5–7 weeks
<b>1 pt</b>	1	6–8 weeks
<b>1 qt</b>	1–2	6–9 weeks
<b>1.25 qt</b>	3	6–9 weeks
<b>2.5 qt</b>	3	6–9 weeks

Plug crop time is 5–6 weeks depending on temperature, light level, plug size, and growing conditions.



Diabunda™ Pink Pearl  
70019221



Diabunda™ Purple  
70019213



Diabunda™ Purple Picotee  
70019219



Diabunda™ Red  
70019212



Diabunda™ Red Picotee  
70019218



Diabunda™ Rose  
70019220



Diabunda™ Mix  
70006748



# GAZANIA

## Big Kiss™

GAZANIA RIGENS



- Huge, striking 4.5-inch blooms held en masse above attractive foliage make a striking display on the retail bench or in the garden
- Full, bushy habits easily fill large containers
- This heat-loving, drought tolerant beauty creates a dependable product to extend the season for premium retail sales



Big Kiss™ Red  
70045987



Big Kiss™ White  
70034962



Big Kiss™ White Flame  
70007596



Big Kiss™ Yellow  
70034958



Big Kiss™ Yellow Flame  
70007597



Big Kiss™ Mix  
70019466

## Gazoo™

GAZANIA RIGENS



- A low-cost alternative to hybrid Gazanias, this open pollinated version features traditional patterned blooms on vigorous plants



Gazoo™ Clear Orange  
70000988



Gazoo™ Clear Vanilla  
70000991



Gazoo™ Clear Yellow  
70000989



Gazoo™ Orange with Ring  
70000993



Gazoo™ Red with Ring  
70000990



Gazoo™ Yellow with Ring  
70000994



Gazoo™ Mix  
70000995

### Specifications

Height	10–12"
Width	10–12"
Habit	Mounded
USDA Zone	8–11
AHS Heat Zone	12–3
Forms Available	Raw

### Recommended Containers

SIZE	PPP	FINISH TIME
1 pt	1	8–10 weeks
1 qt	1	9–11 weeks
1.25 qt	2–3	9–11 weeks
2.5 qt	2–3	9–11 weeks

Plug crop time is 5–6 weeks depending on temperature, light level, plug size, and growing conditions.

### Specifications

Height	10–12"
Width	12–14"
Habit	Mounded
USDA Zone	8–11
AHS Heat Zone	12–3
Forms Available	Raw

### Recommended Containers

SIZE	PPP	FINISH TIME
1 pt	1	8–10 weeks
1 qt	1–2	9–11 weeks
1.25 qt	3	9–11 weeks
2.5 qt	3	9–11 weeks

Plug crop time is 5–6 weeks depending on temperature, light level, plug size, and growing conditions.



# GAZANIA

## Kiss™

GAZANIA RIGENS



- Green foliage with multiple, large blooms on tightly mounded plants that work perfectly in premium 1 qt. pots and larger
- Uniform habit and flowering for easy production, even at higher densities



Kiss™ Golden Flame  
70019446



Kiss™ Orange  
70007963



Kiss™ Orange Flame  
70019468



Kiss™ Rose  
70007964



Kiss™ White  
70007965



Kiss™ Yellow  
70041326



Kiss™ Yellow Flame  
70003658



Kiss™ Flame Mix  
70019462



Kiss™ Mix  
70002733

### Specifications

Height	8–10"
Width	8–10"
Habit	Mounded
USDA Zone	8–11
AHS Heat Zone	12–3
Forms Available	Raw

### Recommended Containers

SIZE	PPP	FINISH TIME
Packs	1	8–9 weeks
1 pt	1	8–10 weeks
1 qt	1–2	9–11 weeks
1.25 qt	3	9–11 weeks
2.5 qt	3	9–11 weeks

Plug crop time is 5–6 weeks depending on temperature, light level, plug size, and growing conditions.

## Frosty Kiss™

GAZANIA RIGENS



- Silver foliage companion to Kiss series, provides additional retail and garden interest even when flowers are closed
- Earlier and more uniform flowering than other Gazania series with silver leaves for easier and more economical production



Frosty Kiss™ Orange  
70041324



Frosty Kiss™ Yellow  
70019470



Frosty Kiss™ Red  
70035166



Frosty Kiss™ White  
70019469



Frosty Kiss™ Orange Flame  
70034746



Frosty Kiss™ White Flame  
70027332



Frosty Kiss™ Flame Mix  
70035991



Frosty Kiss™ Mix  
70059481

### Specifications

Height	8–10"
Width	8–10"
Habit	Mounded
USDA Zone	8–11
AHS Heat Zone	12–3
Forms Available	Raw

### Recommended Containers

SIZE	PPP	FINISH TIME
Packs	1	8–9 weeks
1 pt	1	8–10 weeks
1 qt	1–2	9–11 weeks
1.25 qt	3	9–11 weeks
2.5 qt	3	9–11 weeks

Plug crop time is 5–6 weeks depending on temperature, light level, plug size, and growing conditions.



# GERANIUM

## BullsEye™

PELARGONIUM × HORTORUM



- Eye-catching geranium worthy of capturing a premium price at retail
- Beautiful chocolate foliage and contrasting bloom color sets this series apart from other geraniums
- Works well alone or in mixed containers where the foliage provides added interest
- Versatility to produce in a key range of container sizes



BullsEye™ Cherry  
70002899



BullsEye™ Light Pink  
70002900



BullsEye™ Red  
70034977



BullsEye™ Salmon  
70002901



BullsEye™ Scarlet  
70002902



BullsEye™ Mix  
70004126

### Specifications

Height	13–15"
Width	11–13"
Habit	Mounded
USDA Zone	10–11
AHS Heat Zone	12–1
Forms Available	Coated

### Recommended Containers

SIZE	PPP	FINISH TIME
1 qt	1	8–10 weeks
1.25 qt	1	8–10 weeks
2.5 qt	2	10–12 weeks
3 qt	3	10–12 weeks
1.5 gal HB	3–5	10–12 weeks
1.5 gal	3–5	10–12 weeks
2 gal HB	5	10–12 weeks

Plug crop time is 4–5 weeks depending on temperature, light level, plug size, and growing conditions.

## Multibloom™

PELARGONIUM × HORTORUM



- Genetically dwarf habit makes this the perfect promotional series
- Easier to finish in small pots/packs
- Very early to flower as a fast crop with incredible flower power with 15–20 blooms per plant
- Lot of show of color at retail for fast sell through

### Specifications

Height	10–12"
Width	10–12"
Habit	Mounded
USDA Zone	10–11
AHS Heat Zone	12–1
Forms Available	Coated

### Recommended Containers

SIZE	PPP	FINISH TIME
Packs	1	6–7 weeks
1 pt	1	6–8 weeks
1 qt	1	7–9 weeks
1.25 qt	1	8–10 weeks

Plug crop time is 4–5 weeks depending on temperature, light level, plug size, and growing conditions.



Multibloom™ Capri  
70020561



Multibloom™ Lavender  
70041413



Multibloom™ Pink  
70020472



Multibloom™ Red  
70034994



Multibloom™ Salmon  
70020474



Multibloom™ Violet  
70034995



Multibloom™ White  
70020477



Multibloom™ Mix  
70020563

# GERANIUM

## Maverick™

PELARGONIUM × HORTORUM



- High quality, vigorous plants quickly fill larger pots
- Large, premium flowers have high retail impact
- Strong garden vigor fills beds quickly for season-long color



Maverick™ Appleblossom  
70020496



Maverick™ Coral  
70020467



Maverick™ Orange  
70058297



Maverick™ Pink  
70007882



Maverick™ Quicksilver  
70020524



Maverick™ Red  
70007883



Maverick™ Rose  
70035016



Maverick™ Salmon  
70007884



Maverick™ Scarlet  
70007885



Maverick™ Scarlet Picotee  
70035176



Maverick™ Star  
70007886



Maverick™ Violet Imp.  
70035174



Maverick™ Violet Picotee  
70045907



Maverick™ White  
70007887



Maverick™ Mix  
70020575

### Specifications

Height	14–16"
Width	12–14"
Habit	Mounded
USDA Zone	10–11
AHS Heat Zone	12–1
Forms Available	Coated

### Recommended Containers

SIZE	PPP	FINISH TIME
1 qt	1	8–10 weeks
1.25 qt	1	8–10 weeks
2.5 qt	2	10–12 weeks
3 qt	3	10–12 weeks
1.5 gal HB	3–5	10–12 weeks
1.5 gal	3–5	10–12 weeks
2 gal HB	5	10–12 weeks

Plug crop time is 4–5 weeks depending on temperature, light level, plug size, and growing conditions.

## Pinto™ Premium

PELARGONIUM × HORTORUM



- The market leader in seed geraniums
- Well-branched, vigorous plants adapt easily to high density production
- Uniform early flowering series with large flowers on short stems are easier to ship and hold better on retail shelf
- Broad assortment of vibrant colors and novelty patterns



### Specifications

Height	14–16"
Width	12–14"
Habit	Mounded
USDA Zone	10–11
AHS Heat Zone	12–1
Forms Available	Coated

### Recommended Containers

SIZE	PPP	FINISH TIME
1 pt	1	7–10 weeks
1 qt	1	8–10 weeks
1.25 qt	1	8–10 weeks
2.5 qt	2	10–12 weeks
3 qt	3	10–12 weeks
1.5 gal HB	3–5	10–12 weeks
1.5 gal	3–5	10–12 weeks
2 gal HB	5	10–12 weeks

Plug crop time is 4–5 weeks depending on temperature, light level, plug size, and growing conditions.



Pinto™ Premium Coral  
70006966



Pinto™ Premium Deep Red  
70006959



Pinto™ Premium Deep Rose  
70006967



Pinto™ Premium Deep Scarlet  
70020522



Pinto™ Premium Lavender  
70006965



Pinto™ Premium Lavender Rose  
70035014



Pinto™ Premium Orange  
70058303



Pinto™ Premium Orange Bicolor  
70035017

# GERANIUM



Pinto™ Premium Rose Bicolor  
70041412



Pinto™ Premium Salmon  
70000819



Pinto™ Premium Salmon Splash  
70006957



Pinto™ Premium Violet  
70006956



Pinto™ Premium White  
70020520



Pinto™ Premium White to Rose  
70035021



Pinto™ Premium Mix  
70056148

## Ringo 2000™

PELARGONIUM × HORTORUM



- Perfect series for early-season promotions for smaller pot production
- Versatile habit effortlessly accommodates tighter spacing
- Blooms ultra-early, yet provides outstanding performance

### Specifications

<b>Height</b>	12–14"
<b>Width</b>	10–12"
<b>Habit</b>	Mounded
<b>USDA Zone</b>	10–11
<b>AHS Heat Zone</b>	12–1
<b>Forms Available</b>	Coated

### Recommended Containers

SIZE	PPP	FINISH TIME
<b>Packs</b>	1	7–8 weeks
<b>1 pt</b>	1	6–8 weeks
<b>1 qt</b>	1	8–10 weeks
<b>1.25 qt</b>	1	8–10 weeks
<b>1.5 gal HB</b>	4–5	10–12 weeks

Plug crop time is 4–5 weeks depending on temperature, light level, plug size, and growing conditions.



Ringo 2000™ Cardinal  
70000807



Ringo 2000™ Deep Red  
70000816



Ringo 2000™ Deep Rose  
70000791



Ringo 2000™ Deep Scarlet  
70020465



Ringo 2000™ Lavender  
70000803



Ringo 2000™ Pink  
70000802



Ringo 2000™ Rose Star  
70000804



Ringo 2000™ Salmon  
70000808



Ringo 2000™ Scarlet Star  
70000806



Ringo 2000™ Violet  
70000809



Ringo 2000™ White  
70000801

# GERANIUM — IVY

## Tornado™

PELARGONIUM PELTATUM



- Best in baskets, naturally trailing, free-flowering seed alternative to ivy geraniums
- Economic alternative to cuttings and no pinching or PGRs are required
- Low maintenance production and very edema tolerant

### Specifications

<b>Height</b>	8–10"
<b>Width</b>	12–14"
<b>Habit</b>	Trailing
<b>USDA Zone</b>	10–11
<b>AHS Heat Zone</b>	12–1
<b>Forms Available</b>	Coated

### Recommended Containers

SIZE	PPP	FINISH TIME
<b>1 qt</b>	1	8–9 weeks
<b>1.25 qt</b>	2–3	9–10 weeks
<b>2.5 qt</b>	2–3	9–10 weeks
<b>3 qt</b>	3–4	10–11 weeks
<b>1.5 gal HB</b>	3–5	10–11 weeks
<b>2 gal HB</b>	5–7	10–11 weeks

Plug crop time is 6–8 weeks depending on temperature, light level, plug size, and growing conditions.



Tornado™ Bicolor Duet  
70000782



Tornado™ Carmine  
70000778



Tornado™ Fuchsia  
70000783



Tornado™ Lilac  
70000784



Tornado™ Pink  
70000780



Tornado™ Red  
70000786



Tornado™ Rose  
70000779



Tornado™ White  
70000785



Tornado™ Mix  
70000777



## Bengal™

GERBERA JAMESONII



- Top performer with big, beautiful, show-stopping blooms
- More vigorous than Jaguar™, with a full yet controlled plant habit that is ideal for large pots
- Early, uniform flowering, producing multiple flower stems for high impact at retail and longer shelf life
- Large blooms on short, thick stems allow for efficient cart shelf spacing and high-impact color right off the rack



### Specifications

<b>Height</b>	10–12"
<b>Width</b>	7–9"
<b>Habit</b>	Upright
<b>USDA Zone</b>	9–11
<b>AHS Heat Zone</b>	12–1
<b>Forms Available</b>	SatinCoat™

### Recommended Containers

SIZE	PPP	FINISH TIME
<b>1.25 qt</b>	1	10–11 weeks
<b>2.5 qt</b>	1	10–11 weeks
<b>3 qt</b>	3	11–12 weeks
<b>1.5 gal HB</b>	3	11–12 weeks
<b>1.5 gal</b>	3	11–12 weeks

Plug crop time is 5–8 weeks depending on temperature, light level, plug size, and growing conditions.



# GERBERA



Bengal™ Orange  
70035512



Bengal™ Orange with Eye  
70035514



Bengal™ Red with Eye  
70035498



Bengal™ Rose with Eye  
70035518



Bengal™ White  
70035487



Bengal™ Yellow with Eye  
70040767



Bengal™ Mix  
70066334



## Jaguar™

GERBERA JAMESONII



- Maximum efficiency for high-density profitability
- Earliest and most uniform series on the market today for high density production
- Synchronized flowering allows for bench-run shipping with three to five blooms per plant at first flush
- Short, thick flower stems and space saving footprint simplify production and shipping to maximize profits



### Specifications

Height	8–10"
Width	6–8"
Habit	Upright
USDA Zone	9–11
AHS Heat Zone	12–1
Forms Available	SatinCoat™

### Recommended Containers

SIZE	PPP	FINISH TIME
1 pt	1	9–10 weeks
1 qt	1	9–11 weeks
1.25 qt	1–2	9–11 weeks
2.5 qt	2–3	9–11 weeks
3 qt	3–5	10–12 weeks
1.5 gal HB	3–5	10–12 weeks
1.5 gal	3–5	10–12 weeks

Plug crop time is 5–8 weeks depending on temperature, light level, plug size, and growing conditions.



Jaguar™ Deep Orange  
70000973



Jaguar™ Deep Rose Imp.  
70019516



Jaguar™ Fire  
70000979



Jaguar™ Fire Dark Center  
70007957



Jaguar™ Lemon Dark Center  
70019523



Jaguar™ Pink  
70000984



Jaguar™ Red  
70000974



Jaguar™ Rose Dark Center  
70000970

# GERBERA



Jaguar™ Rose Picotee  
70000977



Jaguar™ Scarlet  
70019518



Jaguar™ Scarlet Shades Dark Center  
70000983



Jaguar™ Tangerine  
70000978



Jaguar™ Tangerine Dark Center  
70019511



Jaguar™ Yellow  
70000976



Jaguar™ Yellow Dark Center  
70000969



Jaguar™ Fall Colors Mix  
70036931



Jaguar™ Mix  
70000972



Jaguar™ Salsa Mix  
70036932



Jaguar™ Spring Time Mix  
70036930



## Cartwheel™

GERBERA JAMESONII



- Delightfully popular in distinctive designer hues, these semi-double blooms combined with attractive foliage, make Cartwheel jump off the shelf
- Multi-blooming, vigorous plants will shine in retail-ready containers and offer extended retail and consumer shelf life
- Seed-produced plants offer a cost efficient alternative to vegetative liners and fit well into automated greenhouse production systems



Cartwheel™ Autumn Colors  
70019519



Cartwheel™ Chardonnay  
70019517



Cartwheel™ Glowing Ember  
70019506



Cartwheel™ Strawberry Twist  
70019515

### Specifications

Height	16–18"
Width	12–16"
Habit	Upright
USDA Zone	9–11
AHS Heat Zone	12–1
Forms Available	SatinCoat™

### Recommended Containers

SIZE	PPP	FINISH TIME
1.25 qt	1	10–11 weeks
2.5 qt	1	10–11 weeks
3 qt	3	11–12 weeks
1.5 gal	3	11–12 weeks
2.5 gal	4–5	11–12 weeks

Plug crop time is 5–8 weeks depending on temperature, light level, plug size, and growing conditions.

## Elephant™

GERBERA JAMESONII



- Super huge daisy-like flowers held above robust, beefy plants can create a premium product in larger containers
- Easy to ship and merchandise with flowers supported by thick, sturdy stems that resist breaking
- An economical alternative to expensive tissue culture liners – combines all the efficiency of seed with a unique, premium look that can capture higher value at retail



Elephant™ Scarlet  
70019504

### Specifications

Height	16–18"
Width	12–16"
Habit	Upright
USDA Zone	9–11
AHS Heat Zone	12–1
Forms Available	SatinCoat™

### Recommended Containers

SIZE	PPP	FINISH TIME
1.25 qt	1	9–10 weeks
2.5 qt	1	9–10 weeks
3 qt	2–3	10–11 weeks
1.5 gal	3	10–11 weeks
2.5 gal	3–4	10–11 weeks

Plug crop time is 5–8 weeks depending on temperature, light level, plug size, and growing conditions.

## Accent™

IMPATIENS WALLERIANA



- Slightly more vigorous than the Accent™ Premium varieties, these Accent varieties broaden the range with more high-demand star pattern colors and unique solid hues



Accent™ Burgundy  
70003719



Accent™ Coral  
70019610



Accent™ Deep Pink  
70003717



Accent™ Lavender Blue  
70019609



Accent™ Red Star  
70019615



Accent™ Rose Star  
70034240



Accent™ Star Mix  
70002765



### Specifications

Height	10–12"
Width	10–12"
Habit	Mounded
USDA Zone	10–11
AHS Heat Zone	9–1
Forms Available	Raw

### Recommended Containers

SIZE	PPP	FINISH TIME
Packs	1	5–6 weeks
1 qt	1–2	6–7 weeks
1.25 qt	2–3	7–8 weeks
1.5 gal HB	5–7	9–10 weeks
1.5 gal	5–7	9–10 weeks

Plug crop time is 4–5 weeks depending on temperature, light level, plug size, and growing conditions.

## Accent™ Premium

IMPATIENS WALLERIANA



- The Impatiens series of choice when large, high-quality blooms and strong garden vigor matter most
- Ideal for larger retail-ready containers, but also adaptable to production in small pots or packs where its large flowers can handle PGR applications
- Strong plant vigor withstands cooler growing conditions and other environmental stresses to provide consumers with full flower beds



### Specifications

Height	10–12"
Width	10–12"
Habit	Mounded
USDA Zone	10–11
AHS Heat Zone	9–1
Forms Available	Raw

### Recommended Containers

SIZE	PPP	FINISH TIME
Packs	1	5–6 weeks
1 qt	1–2	6–7 weeks
1.25 qt	2–3	7–8 weeks
1.5 gal HB	5–7	9–10 weeks
1.5 gal	5–7	9–10 weeks

Plug crop time is 4–5 weeks depending on temperature, light level, plug size, and growing conditions.



Accent™ Premium Bright Eye  
70034868



Accent™ Premium Deep Orange  
70034874



Accent™ Premium Lilac  
70034871



Accent™ Premium Orange Star  
70034792



Accent™ Premium Pink  
70034869



Accent™ Premium Red  
70034875



Accent™ Premium Rose  
70034870



Accent™ Premium Salmon  
70034873

# IMPATIENS



Accent™ Premium Violet  
70034872



Accent™ Premium Violet Star  
70034876



Accent™ Premium White  
70034867



Accent™ Premium Mix  
70038516



Accent™ Premium Mystic Mix  
70048608



Accent™ Premium Pastel Mix  
70048606



Accent™ Premium Peppermint Mix  
70048607

## Tumbler™

IMPATIENS WALLERIANA



- Bred specifically for baskets, window boxes, and mixed containers where its unique, trailing habit spills over the sides of pots
- Strong, spreading vigor fills pots faster with fewer plants than traditional Impatiens, lowering overall input costs
- Trailing habit creates hanging baskets with flower color at eye level, where it matters most for retail sell through

### Specifications

Height	12–14"
Width	24–30"
Habit	Trailing
USDA Zone	10–11
AHS Heat Zone	9–1
Forms Available	Raw

### Recommended Containers

SIZE	PPP	FINISH TIME
Packs	1	5–6 weeks
1 qt	1–2	6–7 weeks
1.25 qt	1–2	7–8 weeks
2.5 qt	2–3	7–8 weeks
1.5 gal HB	4–5	9–10 weeks
1.5 gal	4–5	9–10 weeks

Plug crop time is 4–5 weeks depending on temperature, light level, plug size, and growing conditions.



Tumbler™ Rose  
70006817



Tumbler™ Rose Star  
70019789



Tumbler™ Salmon  
70006819



Tumbler™ Scarlet  
70019719



Tumbler™ Violet  
70006814



Tumbler™ Violet Star  
70019790



Tumbler™ White  
70008843

## Xtreme™

IMPATIENS WALLERIANA



- Excellence under high density pressure
- Perfect for high-volume, high-density pack and pot production with no compromise in plant quality at retail or in the landscape
- Uniform and early flowering with short internodes and incredible branching across the series
- Non-stretching habit extends shelf life with minimal-to-no PGRs



### Specifications

Height	8–10"
Width	8–10"
Habit	Mounded
USDA Zone	10–11
AHS Heat Zone	9–1
Forms Available	Raw

### Recommended Containers

SIZE	PPP	FINISH TIME
Packs	1	5–6 weeks
1 qt	1–2	6–7 weeks
1.25 qt	2–3	7–8 weeks
1.5 gal HB	5–7	9–10 weeks
1.5 gal	5–7	9–10 weeks

Plug crop time is 4–5 weeks depending on temperature, light level, plug size, and growing conditions.



Xtreme™ Bright Eye  
70036399



Xtreme™ Bright Rose  
70036401



Xtreme™ Lavender  
70007941



Xtreme™ Lilac  
70007942



Xtreme™ Orange  
70007944



Xtreme™ Pink  
70007945



Xtreme™ Red  
70007946



Xtreme™ Salmon  
70041356



# IMPATIENS



Xtreme™ Scarlet  
70041357



Xtreme™ Violet  
70007950



Xtreme™ White  
70007951



Xtreme™ Hot! Mix  
70019645



Xtreme™ Little Gem Mix  
70019643



Xtreme™ Mix  
70007943



Xtreme™ Pastel Mix  
70019646



Xtreme™ Rosy Mix  
70019647



Xtreme™ Sapphire Mix  
70019648



Xtreme™ Tango Mix  
70019649



Xtreme™ Utopia Mix  
70019642

# LAURENTIA

## Starshine™

LAURENTIA AXILLARIS



Starshine™ Blue  
70002817

- A great seed alternative to cuttings, with a rounded and mounded habit that works well in baskets and combos
- Unlike many other Laurentia, Starshine creates well-branched plants that flower without the need for long days
- This unique, early-season annual offers a touch of blue to the retail assortment and exhibits very good heat tolerance

### Specifications

Height	8–12"
Width	8–12"
Habit	Mounded
USDA Zone	7–11
AHS Heat Zone	12–1
Forms Available	Raw

### Recommended Containers

SIZE	PPP	FINISH TIME
1 qt	1	10–11 weeks
1.5 gal HB	3–5	10–11 weeks
1.5 gal	3–5	10–11 weeks

Plug crop time is 7–10 weeks depending on temperature, light level, plug size, and growing conditions.

## Antigua™

TAGETES ERECTA



- Less day-length sensitivity makes Antigua a programmable, easy-to-grow, hassle-free product for early spring shipping
- Naturally dwarf and branching plants fit perfectly on racks with little to no PGRs required
- Strong flower stems support beautifully rounded 3-inch blooms that hold up well in shipping and the garden



Antigua™ Gold  
70000562



Antigua™ Orange  
70000561



Antigua™ Primrose  
70000563



Antigua™ Yellow  
70000560



Antigua™ Mix  
70020845

### Specifications

<b>Height</b>	10–12"
<b>Width</b>	10–12"
<b>Habit</b>	Upright
<b>USDA Zone</b>	8–11
<b>AHS Heat Zone</b>	12–1
<b>Forms Available</b>	Raw/Detailed, SatinCoat™

### Recommended Containers

SIZE	PPP	FINISH TIME
<b>Packs</b>	1	6–7 weeks
<b>1 qt</b>	1	7–8 weeks

Plug crop time is 4–5 weeks depending on temperature, light level, plug size, and growing conditions.

## Inca II™

TAGETES ERECTA



- Meets the market demand for retail-ready containers with a well-branched, intermediate plant and large double blooms
- Early flowering, even under increasing day lengths, make Inca II easily adaptable for both early or late spring production
- An outstanding choice for color and fill in sunny landscape applications



Inca II™ Gold  
70000567



Inca II™ Orange  
70000568



Inca II™ Primrose  
70000570



Inca II™ Yellow  
70000569



Inca II™ Mix  
70000566

### Specifications

<b>Height</b>	12–14"
<b>Width</b>	12–14"
<b>Habit</b>	Upright
<b>USDA Zone</b>	8–11
<b>AHS Heat Zone</b>	12–1
<b>Forms Available</b>	Raw/Detailed, SatinCoat™

### Recommended Containers

SIZE	PPP	FINISH TIME
<b>Packs</b>	1	7–8 weeks
<b>1 qt</b>	1	8–9 weeks
<b>1.25 qt</b>	1	9–10 weeks

Plug crop time is 4–5 weeks depending on temperature, light level, plug size, and growing conditions.

## Moonstruck®

TAGETES ERECTA



Moonstruck® Lemon Yellow  
70020873



Moonstruck® Yellow  
70000565

- Vigorous plants and saturated colors meet the demand for high-impact at retail and in the garden
- Superior quality flowers and strong branching make Moonstruck a great choice for premium production in large packs and pots
- Retailers and home gardeners benefit from the huge, super-dense blooms that repel water and last longer

### Specifications

<b>Height</b>	12–14"
<b>Width</b>	12–14"
<b>Habit</b>	Upright
<b>USDA Zone</b>	8–11
<b>AHS Heat Zone</b>	12–1
<b>Forms Available</b>	Raw/Detailed, SatinCoat™

### Recommended Containers

SIZE	PPP	FINISH TIME
<b>Packs</b>	1	7–8 weeks
<b>1 qt</b>	1	8–9 weeks
<b>1.25 qt</b>	1	9–10 weeks
<b>2.5 qt</b>	1–2	9–10 weeks

Plug crop time is 4–5 weeks depending on temperature, light level, plug size, and growing conditions.

## Perfection™

TAGETES ERECTA



Perfection™ Orange  
70002947



Perfection™ Yellow  
70002948

- Perfection is the landscaper's marigold of choice for color, consistent performance and stately height in the garden
- Sturdy plants work well in larger pots and provide instant retail and garden color
- Large, double flowers are long-lasting, shed water easily and exhibit superior weather tolerance

### Specifications

<b>Height</b>	14–16"
<b>Width</b>	12–14"
<b>Habit</b>	Upright
<b>USDA Zone</b>	8–11
<b>AHS Heat Zone</b>	12–1
<b>Forms Available</b>	Raw/Detailed, SatinCoat™

### Recommended Containers

SIZE	PPP	FINISH TIME
<b>1 qt</b>	1	9–10 weeks
<b>1.25 qt</b>	1	9–10 weeks
<b>2.5 qt</b>	1–2	9–10 weeks

Plug crop time is 4–5 weeks depending on temperature, light level, plug size, and growing conditions.

# NEW GUINEA IMPATIENS

## Florific™

IMPATIENS HAWKERI



- This New Guinea Impatiens sets the new standard for economical and fast high-density production from seed
- Uniform and well-branched plants are paired with large, flat flowers help on top of the foliage
- A great alternative to Impatiens walleriana where Impatiens Downy Mildew exists in the landscape



Florific™ Lavender  
70019983



Florific™ Red  
70019984



Florific™ Sweet Orange  
70019990



Florific™ Violet  
70019982



Florific™ White  
70019978



Florific™ Mix  
70019980

### Specifications

Height	8–12"
Width	10–12"
Habit	Mounded
USDA Zone	10–11
AHS Heat Zone	9–1
Forms Available	Raw

### Recommended Containers

SIZE	PPP	FINISH TIME
Packs	1	7–9 weeks
1 pt	1	7–9 weeks
1 qt	1	7–9 weeks
1.25 qt	1–2	7–9 weeks
2.5 qt	2–3	8–10 weeks
1.5 gal HB	3–5	8–10 weeks

Plug crop time is 4–6 weeks depending on temperature, light level, plug size, and growing conditions.



# NICOTIANA

## Saratoga™

NICOTIANA × ALATA



- Bushy plants are easy to manage and bloom in packs and small containers
- Eye-catching flowers are held upright for maximum visual impact
- Great used in sunny or shaded gardens and as accent plants in combinations

### Specifications

<b>Height</b>	10–12"
<b>Width</b>	10–12"
<b>Habit</b>	Upright
<b>USDA Zone</b>	8–11
<b>AHS Heat Zone</b>	12–1
<b>Forms Available</b>	Raw, Pellets

### Recommended Containers

SIZE	PPP	FINISH TIME
<b>Packs</b>	1	5–6 weeks
<b>1 qt</b>	1	6–7 weeks
<b>1.25 qt</b>	1–2	7–8 weeks
<b>2.5 qt</b>	2–3	7–8 weeks

Plug crop time is 4–5 weeks depending on temperature, light level, plug size, and growing conditions.



Saratoga™ Appleblossom  
70002854



Saratoga™ Lime  
70002855



Saratoga™ Purple Bicolor  
70019992



Saratoga™ Red  
70002851



Saratoga™ Rose  
70002852



Saratoga™ White  
70002853



Saratoga™ Mix  
70002856

## Asti™

OSTEOSPERMUM ECKLONIS

- Enjoy the benefits of seed vs. cutting — no virus, tag, or royalty issues
- No vernalization needed
- Very uniform from sow to flower

### Specifications

<b>Height</b>	17–20"
<b>Width</b>	17–20"
<b>Habit</b>	Mounded
<b>USDA Zone</b>	9–11
<b>AHS Heat Zone</b>	6–1
<b>Forms Available</b>	Raw

### Recommended Containers

SIZE	PPP	FINISH TIME
<b>1 qt</b>	1	10–14 weeks
<b>1.25 qt</b>	2–3	12–15 weeks
<b>2.5 qt</b>	2–3	12–15 weeks

Plug crop time is 4–5 weeks depending on temperature, light level, plug size, and growing conditions.



Asti™ Lavender Shades  
70019997



Asti™ Purple  
70007847



Asti™ Purple Bicolor  
70041361



Asti™ White  
70007848



Asti™ Mix  
70019998

# OSTEOSPERMUM

# PANSIES AND VIOLAS

## **Pansies and Violas are better with PreNova® 2.0 — speed and strength delivers multi-season benefits.**

Syngenta Flowers offers the broadest and deepest pansy and Viola pool in the industry. Inside our product range, we provide the best genetics for any use, program, or season. With more than 160 years of combined experience — reaching back to Sluis and Groot and Goldsmith Seeds pansy breeding — we are at the forefront of introducing the best-in-class varieties that growers can trust.

Get even quicker turns and faster germination when you combine Syngenta pansy and Viola genetics with PreNova® 2.0, our best seed enhancement to date that providing growers with superior germination and uniformity for spring and fall production — even in cooler- or warmer-than optimal temperatures.

Free up valuable germination chambers in the spring by going directly to the bench after sowing or even eliminate a day in the chamber for quicker chamber turns in the fall.

PreNova® 2.0's impressive speed of germination allows for a head start on developing strong root and shoots systems.



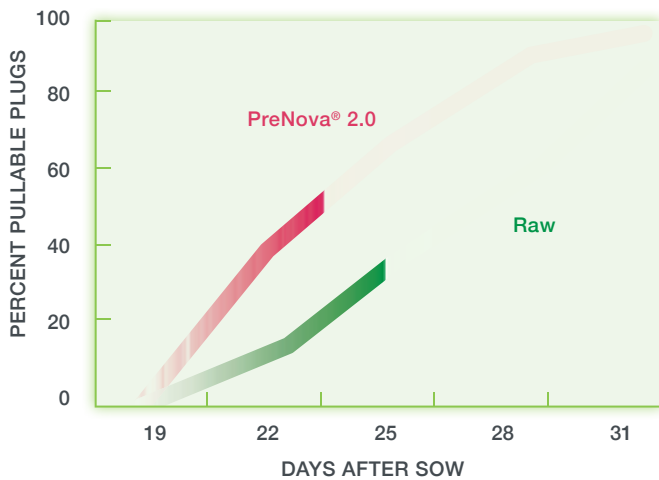
# Experience enhanced performance with PreNova® 2.0

PreNova® 2.0 seed enhancements provide benefits year-round for all your seasonal germination and growing challenges. The next generation of pre-germinated seed enhancement for pansy and Viola provides that extra edge with a built-in advantage for speed and uniformity of seedling emergence and development under an even wider range of germination temperatures.

PreNova® 2.0 will provide the uniformity needed when germinating on the bench under cool growing conditions. During the heat of summer, growers have experienced shorter times in the germination chambers.

Beyond initial germination, faster growth and stronger root systems allow for plugs to be pulled and transplanted earlier from the tray.

## PULLABLE & TRANSPLANTABLE PLUGS



Source: Syngenta Flowers, Gilroy, CA 11/04/2015–12/10/2015



10 DAYS AFTER SOW

Top: PreNova® 2.0 – Average Mass 0.8 grams  
Bottom: Raw Control – Average Mass 0.4 grams



31 DAYS AFTER SOW

Top: PreNova® 2.0 – Average Mass 3.5 grams  
Bottom: Raw Control – Average Mass 2.3 grams

The results are in...data-driven research findings across the series — PreNova® 2.0 vs raw seed

**26%**

increase in germination under warm temperatures

**78%**

larger seedlings

**28%**

more pullable and transplantable plugs

**3**

days earlier to transplant

**PreNova® 2.0 is offered for these series:**

Colossus™ Pansy • Delta™ Pansy • Delta™ Premium Pansy • Karma™ Pansy • Mammoth™ Pansy  
WonderFall™ Spreading Pansy • Penny™ Viola • Endurio™ Spreading Viola

# PENNY™ VIOLA

Penny is one of the top selling Violas around the world. Renowned for its non-stop flowering and uniformity in timing and habit, Penny's high density pack production is a snap with its compact, non-stretching habit. Penny also boasts long-lasting garden color with dependable overwintering for a big bounce back in the spring.



# ENDURIO® SPREADING VIOLA

Endurio spreading Violas provide the durability Violas need to go the distance in fall, during winter, and through the spring. Frost and snow resistant, and nearly day neutral, Endurio will flower continuously as long as temperatures are above freezing. Endurio features a vigorous, low-growing habit that quickly fills the pot or the garden.



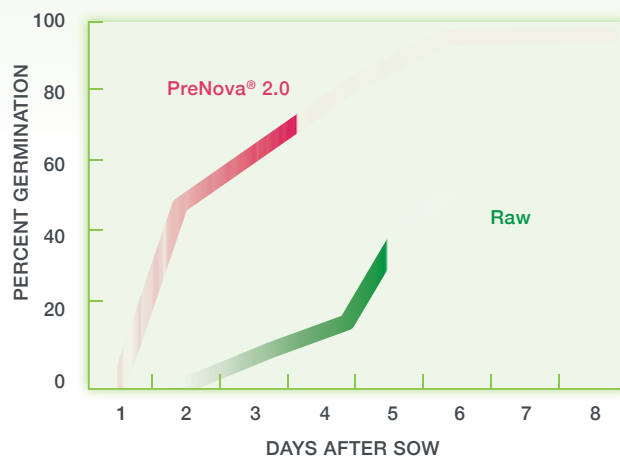


# DELTA™ PREMIUM PANSY

Delta Premium provides the optimum balance between plant growth and pot fill in relationship to bud set, producing a uniform, well-timed and manageable crop. Non-stretching, strongly-branched plants produce a high number of blooms while requiring fewer PGRs to finish a high quality crop for either spring or fall production cycles. Combine with PreNova® 2.0 seed enhancement for even faster bench turns.



COOLEST TEMPERATURE: 65°F (18.5°C)



Source: Syngenta Flowers, Gilroy, CA 08/08/2015–09/17/2015

# COLOSSUS™ PANSY

## Summer Production Challenges — Bring it On

Heat and humidity tolerance enable Colossus to maintain its tight, non-stretching habit under high-density production regimes even under the toughest summer conditions. Built to handle the heat, Colossus resists bud abortion and bloom shrink under hot, humid conditions. Combine with PreNova® 2.0 for an even greater growing advantage.

WARMEST TEMPERATURE: 85°F (29.4°C)



Source: Syngenta Flowers, Gilroy, CA 08/08/2015–09/17/2015



## Colossus™

VIOLA × WITTROCKIANA

- **HEAT AND HUMIDITY – MEET COLOSSUS**
- Tight, non-stretching habit developed specifically for high density production requiring fewer PGRs — well-suited for late summer/fall markets
- Enormous blooms stand up to heat stress with less stretch and shrink to create consumer appeal even under hot and humid conditions
- Fast turns, lower productions costs, increased shipping efficiencies and a long shelf-life — what's not to love about Colossus?



### Specifications

Height	4–5"
Width	6–8"
Habit	Mounded
USDA Zone	7–10
AHS Heat Zone	9–1
Forms Available	Raw, PreNova® 2.0

### Recommended Containers

SIZE	PPP	FINISH TIME
Packs	1	4–7 weeks
1 qt	1	5–7 weeks
1.25 qt	2–3	6–8 weeks

Plug crop time is 4–7 weeks depending on temperature, light level, plug size, and growing conditions.



Colossus™ Deep Blue with Blotch  
70000429



Colossus™ Fire  
70007298



Colossus™ Lavender Medley  
70000392



Colossus™ Lemon Shades  
70007313



Colossus™ Neon Violet  
70000380



Colossus™ Ocean  
70007317

# PANSY



Colossus™ Purple with Blotch  
70000449



Colossus™ Red with Blotch  
70007629



Colossus™ Rose Medley  
70000391



Colossus™ Rose with Blotch  
70000428



Colossus™ Tricolor  
70021122



Colossus™ White  
70000378



Colossus™ White with Blotch  
70000425



Colossus™ White with Purple Wing  
70000389



Colossus™ Yellow  
70021087



Colossus™ Yellow with Blotch  
70020987



Colossus™ Blotched Mix  
70000433



Colossus™ Mix  
70000396

## Delta™ Premium

VIOLA × WITTROCKIANA

- **MULTI-SEASON, ONE SERIES, NO COMPROMISES**
- Spring or fall, this large-flower pansy is renowned for its versatility and its uniformity
- Identical growth and flowering windows across the series eliminates the need to pick and choose among series for colors or season
- Extra early and uniform flowering under the short days of early spring and late fall provide fast greenhouse turns and reliable color
- A tightly branched habit resists stretching, so plants require fewer growth regulators, ship easily and hold longer at retail Ideal for high density finishing
- Offers the widest range of perfectly matched core and novelty colors and mixes in its class, with cheerful, upright facing flowers



### Specifications

Height	4–6"
Width	6–8"
Habit	Mounded
USDA Zone	7–10
AHS Heat Zone	9–1
Forms Available	Raw, PreNova® 2.0

### Recommended Containers

SIZE	PPP	FINISH TIME
Packs	1	4–5 weeks
1 qt	1	5–6 weeks

Plug crop time is 5–6 weeks depending on temperature, light level, plug size, and growing conditions.

# PANSY



Delta™ Premium Beaconsfield  
70000447



Delta™ Premium Blue with Blotch  
70008809



Delta™ Premium Deep Blue  
70027668



Delta™ Premium Gold with Blotch  
70008807



Delta™ Premium Marina  
70002992



Delta™ Premium Neon Violet  
70021234



Delta™ Premium Persian Medley  
70021051



Delta™ Premium Primrose with Blotch  
70002988



Delta™ Premium Pure Golden Yellow  
70000436



Delta™ Premium Pure Lemon  
70021215



Delta™ Premium Pure Light Blue  
70000382



Delta™ Premium Pure Orange  
70008804

# PANSY



Delta™ Premium Pure Primrose  
70000435



Delta™ Premium Pure Violet  
70000420



Delta™ Premium Pure White  
70000416



Delta™ Premium Pure Yellow  
70046083



Delta™ Premium Red with Blotch  
70008805



Delta™ Premium Rose with Blotch  
70000445



Delta™ Premium Tapestry  
70007297



Delta™ Premium True Blue  
70021226



Delta™ Premium Violet & White  
70055097



Delta™ Premium White with Blotch  
70000446



Delta™ Premium Yellow with Blotch  
70000437



Delta™ Premium Yellow with Purple Wing Imp.  
70058914

# PANSY



Delta™ Premium Apple Cider Mix  
70044658



Delta™ Premium Blotch Mix  
70044723



Delta™ Premium Buttered Popcorn Mix  
70021049



Delta™ Premium Cool Waters Mix  
70000442



Delta™ Premium Mix  
70000434



## Delta™

VIOLA × WITTROCKIANA

- Matched for timing and flower size with the Delta Premium range, but with some variation in plant vigor, these unique colors and mixes can add further excitement and sales opportunities to your spring or fall pansy offer



### Specifications

Height	4–6"
Width	6–8"
Habit	Mounded
USDA Zone	7–10
AHS Heat Zone	9–1
Forms Available	Raw, PreNova® 2.0

### Recommended Containers

SIZE	PPP	FINISH TIME
Packs	1	4–5 weeks
1 qt	1	5–6 weeks

Plug crop time is 5–6 weeks depending on temperature, light level, plug size, and growing conditions.



# PANSY



Delta™ Fire  
70000360



Delta™ Lavender Blue Shades  
70000408



Delta™ Pink Shades  
70000419



Delta™ Pure Red  
70000354



Delta™ Pure Rose  
70000344



Delta™ Berry Tart Mix  
70021043



Delta™ Blaze Mix  
70000441



Delta™ Citrus Mix  
70000422



Delta™ Cotton Candy Mix  
70021041



Delta™ Mix  
70000348



Delta™ Monet Mix  
70000443



Delta™ Pumpkin Pie Mix  
70021061



Delta™ Pure Colors Mix  
70000347



Delta™ Tri-Color Mix  
70000444



Delta™ Watercolors Mix  
70021048



Delta™ Wine & Cheese Mix  
70044721

## Karma™

VIOLA × WITTROCKIANA

- The Karma series features large flowers on full bodied plants that are quick to fill the pack or pot, even under stressful growing conditions
- Strong root systems provide the extra “oomph” needed to survive stressful winter conditions
- Available in a playful palette including novelty head-turning colors and patterns

### Specifications

<b>Height</b>	4–6”
<b>Width</b>	6–8”
<b>Habit</b>	Mounded
<b>USDA Zone</b>	7–10
<b>AHS Heat Zone</b>	9–1
<b>Forms Available</b>	Raw, PreNova® 2.0

### Recommended Containers

SIZE	PPP	FINISH TIME
<b>Packs</b>	1	4–5 weeks
<b>1 qt</b>	1	5–6 weeks

Plug crop time is 5–6 weeks depending on temperature, light level, plug size, and growing conditions.



Karma™ Blue Butterfly  
70007799



Karma™ Blue Sun  
70027686



Karma™ Blue with Blotch  
70007801



Karma™ Copperfield  
70021222



Karma™ Deep Orange  
70007797



Karma™ Midnight Sun  
70008810



Karma™ Purple Wing  
70007809



Karma™ Strawberry Cream  
70003005



Karma™ True Blue  
70007814



Karma™ Violet with Face  
70034937



Karma™ White  
70007816



Karma™ Yellow  
70007798



Karma™ Yellow with Blotch  
70034940



Karma™ Mix  
70021138

## Mammoth™

VIOLA × WITTROCKIANA

- Extra large flowered pansy with strong plant vigor and branching for fast and easy pot fill, especially under warm and stressful growing conditions
- Ideal for larger pots, where strong branching is needed to build the plant, and an excellent choice for landscape applications, where quick bed fill is needed
- Quirky names and eye-catching giant blooms lend themselves to engaging retail programs

### Specifications

<b>Height</b>	4–5"
<b>Width</b>	6–8"
<b>Habit</b>	Mounded
<b>USDA Zone</b>	7–10
<b>AHS Heat Zone</b>	9–1
<b>Forms Available</b>	Raw, PreNova® 2.0

### Recommended Containers

SIZE	PPP	FINISH TIME
<b>Packs</b>	1	4–7 weeks
<b>1 qt</b>	1	5–7 weeks
<b>1.25 qt</b>	2–3	6–8 weeks

Plug crop time is 4–7 weeks depending on temperature, light level, plug size, and growing conditions.



Mammoth™ Big Red  
70007819



Mammoth™ Blue-ti-ful  
70007820



Mammoth™ Deep Blue Dazzle  
70007821



Mammoth™ Glamarama White  
70007822



Mammoth™ On Fire  
70007823



Mammoth™ Pink Berry  
70036024



Mammoth™ Prima Yellorina  
70007824



Mammoth™ Queen Yellow Bee  
70007825



Mammoth™ Rocky Rose  
70007826



Mammoth™ Sangria Punch  
70007827



Mammoth™ Viva La Violet  
70007828



Mammoth™ White Hot  
70007829



Mammoth™ Masquerade Mix  
70021243



Mammoth™ Mix  
70021244

## WonderFall™

VIOLA × WITTROCKIANA

- The only spreading pansy with traditional large pansy blooms
- Flowers cover the plants crown to tip, creating high impact hanging baskets and mixed containers
- The vigorously spreading habit also works well in landscape beds where fewer plants cover more ground faster than traditional upright pansies
- A wide range of core colors and trendy shades will help drive impulse sales

### Specifications

<b>Height</b>	8–10"
<b>Width</b>	18–30"
<b>Habit</b>	Trailing
<b>USDA Zone</b>	7–10
<b>AHS Heat Zone</b>	9–1
<b>Forms Available</b>	Raw, PreNova® 2.0

### Recommended Containers

SIZE	PPP	FINISH TIME
<b>1 qt</b>	1	5–7 weeks
<b>1.25 qt</b>	1	5–7 weeks
<b>2.5 qt</b>	1	5–7 weeks
<b>1.5 gal HB</b>	3	6–8 weeks
<b>2 gal HB</b>	3–4	7–9 weeks

Plug crop time is 4–6 weeks depending on temperature, light level, plug size, and growing conditions.



WonderFall™ Blue Picotee Shades  
70041128



WonderFall™ Blue with Blotch  
70034805



WonderFall™ Lavender Picotee Shades  
70041132



WonderFall™ Purple  
70034806



WonderFall™ Purple and Blue Shades  
70041129



WonderFall™ Purple with Face  
70041134



WonderFall™ Rose Shades with Face  
70041131



WonderFall™ White  
70034810



WonderFall™ Yellow  
70048754



WonderFall™ Yellow with Blotch  
70048755



WonderFall™ Yellow with Red Wing  
70041130

## BeeBright™

PENTAS LANCEOLATA



- **BEEBRIGHT FINISHES FASTER**
- BeeBright finishes on average one week faster than the competition
- Tight uniformity across all colors is perfect for program-ability and grower efficiency
- Available in four distinct colors including best in class BeeBright Red



### Specifications

Height	6–8"
Width	12–14"
Habit	Mounded
USDA Zone	10–11
AHS Heat Zone	12–1
Forms Available	Pellets

### Recommended Containers

SIZE	PPP	FINISH TIME
Packs	1	7–8 weeks
1 pt	1	7–8 weeks
1 qt	1	7–8 weeks
1.25 qt	2	7–8 weeks
2.5 qt	2	7–8 weeks

Plug crop time is 7–8 weeks depending on temperature, light level, plug size, and growing conditions.



BeeBright™ Lipstick  
70052741



BeeBright™ Pink  
70041063



BeeBright™ Red  
70052740



BeeBright™ White  
70052739



BeeBright™ Mix  
70069304

## HoneyCluster™

PENTAS LANCEOLATA



- **SWEET COLOR**
- HoneyCluster Pentas are the perfect choice for mid-sized pots where quick fill and fast finish is a must
- HoneyCluster thrives through the heat of summer making it the ideal season extender
- Brightly colored blooms make an impact and are a magnet for pollinators



HoneyCluster™ Deep Rose  
70038537



HoneyCluster™ Pink  
70038536



HoneyCluster™ Red  
70041072



HoneyCluster™ White  
70038535



HoneyCluster™ Mix  
70069303

### Specifications

Height	12–14"
Width	14–18"
Habit	Upright
USDA Zone	10–11
AHS Heat Zone	12–1
Forms Available	Pellets

### Recommended Containers

SIZE	PPP	FINISH TIME
1 qt	1	7–8 weeks
1.25 qt	1	7–8 weeks
2.5 qt	1	7–8 weeks
3 qt	2–3	8–9 weeks
2.5 gal	3–4	8–9 weeks
3 gal	4–5	9–10 weeks

Plug crop time is 7–8 weeks depending on temperature, light level, plug size, and growing conditions.

## PENSTEMON

## Arabesque™

PENSTEMON HARTWEGII



- Ideal for premium programs – offers the look of a perennial with the growing ease of an annual
- Better branching with faster, more reliable crop timing than traditional Penstemon
- Strong, compact plants are easier to handle, and ship without damage

### Specifications

Height	24–30"
Width	18–20"
Habit	Upright
USDA Zone	7–9
AHS Heat Zone	9–1
Forms Available	Raw

### Recommended Containers

SIZE	PPP	FINISH TIME
1 qt	1	11–13 weeks
1.25 qt	2	11–13 weeks
2.5 qt	2	11–13 weeks
3 qt	3	11–13 weeks
1.5 gal	3–5	11–13 weeks

Plug crop time is 5–6 weeks depending on temperature, light level, plug size, and growing conditions.



Arabesque™ Appleblossom  
70020707



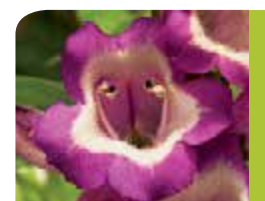
Arabesque™ Orchid  
70020703



Arabesque™ Pink  
70020695



Arabesque™ Red  
70020697



Arabesque™ Violet  
70020701

## Duvel™

PETUNIA GRANDIFLORA

- Uniform series of genetic compact plants topped by large showy flowers
- Ideally suited for high density production in packs or small pots with little to no PGRs
- Non-stretching plants are efficient to ship and merchandise on racks
- Early and uniform flowering, even under short days, for easy finishing in time for the first spring sales
- Compact but with good vigor in the garden and provides the landscape performance consumers expect



### Specifications

Height	6–8"
Width	12–14"
Habit	Mounded
USDA Zone	9–11
AHS Heat Zone	12–1
Forms Available	Raw, Pellets

### Recommended Containers

SIZE	PPP	FINISH TIME
Packs	1	4–5 weeks
1 qt	1	5–6 weeks
1.25 qt	2–3	6–7 weeks
2.5 qt	3	6–7 weeks

Plug crop time is 4–5 weeks depending on temperature, light level, plug size, and growing conditions.



Duvel™ Blue  
70040974



Duvel™ Burgundy  
70059297



Duvel™ Pink  
70040978



Duvel™ Red  
70040981



Duvel™ Salmon  
70040985



Duvel™ White  
70040988



Duvel™ Mix  
70048780

# PETUNIA

## TriTunia™

PETUNIA GRANDIFLORA

- Best of the best – selections of our top performers to simplify your standard grandiflora Petunia program
- Matched for uniformity in habit and flowering to provide performance you can trust from the greenhouse to the garden
- An array of color selections to meet every retail need – bold bright solids, crisp bicolors, novelty veined and morn patterns

### Specifications

Height	10–12"
Width	12–14"
Habit	Mounded
USDA Zone	9–11
AHS Heat Zone	12–1
Forms Available	Raw, Pellets

### Recommended Containers

SIZE	PPP	FINISH TIME
Packs	1	4–5 weeks
1 qt	1	5–6 weeks
1.25 qt	2–3	6–7 weeks
2.5 qt	3	6–7 weeks

Plug crop time is 4–5 weeks depending on temperature, light level, plug size, and growing conditions.



TriTunia™ Blue  
70065664



TriTunia™ Blue Star  
70065668



TriTunia™ Blue Veined  
70065676



TriTunia™ Burgundy  
70065667



TriTunia™ Crimson Star  
70065681



TriTunia™ Lavender  
70065666



TriTunia™ Pink  
70065685



TriTunia™ Pink Morn  
70065679



# PETUNIA



TriTunia™ Pink Veined Imp.  
70037057



TriTunia™ Plum  
70065678



TriTunia™ Purple Star  
70065677



TriTunia™ Red  
70065673



TriTunia™ Red Star  
70065669



TriTunia™ Rose  
70065670



TriTunia™ Rose Star  
70065671



TriTunia™ Salmon Imp.  
70040996



TriTunia™ Salmon Veined  
70065674



TriTunia™ Sky Blue  
70065684



TriTunia™ Violet  
70065680



TriTunia™ White  
70040998



TriTunia™ Mix  
70065675



TriTunia™ ProFormula Mix  
70067443



TriTunia™ Star Mix  
70065672



TriTunia™ Veined Mix  
70065665

# PETUNIA

## Frost™

PETUNIA GRANDIFLORA

- White picotee edges provides striking contrast with solid colors on each flower
- Makes magnificent, eye-catching displays at retail, in containers, and in garden beds

### Specifications

<b>Height</b>	12–14"
<b>Width</b>	14–16"
<b>Habit</b>	Mounded
<b>USDA Zone</b>	9–11
<b>AHS Heat Zone</b>	12–1
<b>Forms Available</b>	Raw, Pellets

### Recommended Containers

SIZE	PPP	FINISH TIME
<b>Packs</b>	1	4–5 weeks
<b>1 qt</b>	1	5–6 weeks
<b>1.25 qt</b>	2–3	6–7 weeks
<b>2.5 qt</b>	3	6–7 weeks

Plug crop time is 4–5 weeks depending on temperature, light level, plug size, and growing conditions.



Frost™ Blue  
70020232



Frost™ Cherry  
70020235



Frost™ Fire  
70008781



Frost™ Velvet  
70002531



Frost™ Mix  
70020243

## Picobella™ Cascade

PETUNIA MILLIFLORA

- This trailing mini-Petunia is perfectly suited for basket, mixed container, and jumbo pack programs
- Extra early flowering, even under short days for extended season color
- Well-branched, spreading plants hold longer at retail than other trailing petunia and don't overgrow companions in mixed containers
- Expands the range of premium seed items for combo and hanging basket segments



Picobella™ Cascade Coral  
70041048



Picobella™ Cascade Lavender  
70041035



Picobella™ Cascade Pink Glo  
70041037



Picobella™ Cascade Purple  
70041033



Picobella™ Cascade Red  
70041039



Picobella™ Cascade Salmon  
70041045



Picobella™ Cascade Sky Blue  
70054327



Picobella™ Cascade White  
70041050



Picobella™ Cascade Mix  
70049717

### Specifications

<b>Height</b>	6–10"
<b>Width</b>	18"
<b>Habit</b>	Spreading
<b>USDA Zone</b>	9–11
<b>AHS Heat Zone</b>	12–1
<b>Forms Available</b>	Pellets

### Recommended Containers

SIZE	PPP	FINISH TIME
<b>Packs</b>	1	4–5 weeks
<b>1 qt</b>	1	5–6 weeks
<b>1.25 qt</b>	2–3	6–7 weeks
<b>2.5 qt</b>	2–3	6–7 weeks
<b>1.5 gal HB</b>	3–5	7–8 weeks

Plug crop time is 4–5 weeks depending on temperature, light level, plug size, and growing conditions.

## Picobella™

PETUNIA MILLIFLORA

- Patented, miniature flowers and petite plants offer a unique addition to the spring retail mix
- Easy and economical to grow – extra early flowering with no special growing regime required and no need for PGRs
- Perfect for small borders, beds, and mixed containers – strong vigor but won't overgrow companion plants



Picobella™ Blue  
70007665



Picobella™ Carmine  
70007666



Picobella™ Light Lavender  
70007667



Picobella™ Pink  
70054306



Picobella™ Red  
70035048



Picobella™ Rose  
70007668



Picobella™ Rose Morn  
70024118



Picobella™ Rose Star  
70024119



Picobella™ Salmon  
70007671



Picobella™ White  
70007670



Picobella™ Mix  
70007838

### Specifications

Height	8–10"
Width	8–10"
Habit	Mounded
USDA Zone	9–11
AHS Heat Zone	12–1
Forms Available	Raw, Pellets

### Recommended Containers

SIZE	PPP	FINISH TIME
Packs	1	4–5 weeks
1 qt	1	5–6 weeks

Plug crop time is 4–5 weeks depending on temperature, light level, plug size, and growing conditions.

## Damask™

PETUNIA MULTIFLORA

- Naturally compact multiflora series bred for high density production in packs and small pots with little to no PGRs
- Non-stretching plants offer extended shelf-life for the grower and retailer and are easy to ship and merchandise on racks
- Early and uniform flowering even under short days
- Covered with attractive, mid-size blooms in time for the first sales of spring
- Tidy plants deliver outstanding garden performance with excellent weather tolerance for season-long enjoyment



### Specifications

<b>Height</b>	6–8"
<b>Width</b>	12–14"
<b>Habit</b>	Mounded
<b>USDA Zone</b>	9–11
<b>AHS Heat Zone</b>	12–1
<b>Forms Available</b>	Raw, Pellets

### Recommended Containers

SIZE	PPP	FINISH TIME
<b>Packs</b>	1	4–5 weeks
<b>1 qt</b>	1	5–6 weeks
<b>1.25 qt</b>	2–3	6–7 weeks
<b>2.5 qt</b>	3	6–7 weeks

Plug crop time is 4–5 weeks depending on temperature, light level, plug size, and growing conditions.

# PETUNIA



Damask™ Blue  
70041000



Damask™ Carmine  
70041002



Damask™ Pink  
70041004



Damask™ Purple  
70059273



Damask™ Red  
70037044



Damask™ Rose  
70041009



Damask™ Salmon  
70041010



Damask™ Violet  
70037046



Damask™ White  
70041013



Damask™ Mix  
70054382

# PETUNIA

## Hurrah™

PETUNIA MULTIFLORA

- Long-time, standard, multiflora Petunia favorite for early season blooms and long-lasting garden performance
- Early and uniform bloom window even under low light conditions for easy scheduling and shipping
- Fills garden beds fast with vigorous, mounded plants covered with medium-size blooms

### Specifications

<b>Height</b>	8–10"
<b>Width</b>	12–14"
<b>Habit</b>	Mounded
<b>USDA Zone</b>	9–11
<b>AHS Heat Zone</b>	12–1
<b>Forms Available</b>	Raw, Pellets

### Recommended Containers

SIZE	PPP	FINISH TIME
<b>Packs</b>	1	4–5 weeks
<b>1 qt</b>	1	5–6 weeks
<b>1.25 qt</b>	2–3	6–7 weeks
<b>2.5 qt</b>	3	6–7 weeks

Plug crop time is 4–5 weeks depending on temperature, light level, plug size, and growing conditions.



Hurrah™ Blue  
70006995



Hurrah™ Blue Veined  
70006996



Hurrah™ Lavender Tie Dye  
70000722



Hurrah™ Pink  
70000705



Hurrah™ Plum  
70006994



Hurrah™ Red  
70000726



Hurrah™ Red Star  
70000727



Hurrah™ Rose  
70000715



Hurrah™ Rose Star  
70000711



Hurrah™ Salmon  
70000706



Hurrah™ Velvet  
70000735



Hurrah™ White  
70000724



Hurrah™ Blueberry Muffin Mix  
70020260



Hurrah™ Mix  
70000709

# PETUNIA

## Plush®

PETUNIA PENDULA

- Reduced day-length sensitivity makes this spreading type easier to finish for late winter and the earliest spring sales
- Tightly branched and balanced plant habit can be grown at higher densities
- Fewer tangled plants makes for easier shipping and merchandising and reduces shrink
- Covered from crown to tip with flowers creating colorful retail displays that will drive impulse sales



### Specifications

Height	10–14"
Width	24–28"
Habit	Spreading
USDA Zone	9–11
AHS Heat Zone	12–1
Forms Available	Pellets

### Recommended Containers

SIZE	PPP	FINISH TIME
1 qt	1	4–5 weeks
1.25 qt	1	5–6 weeks
2.5 qt	1–2	7–8 weeks
1.5 gal HB	3	7–8 weeks
2 gal HB	5	7–8 weeks

Plug crop time is 4–5 weeks depending on temperature, light level, plug size, and growing conditions.

SEED | ANNUALS



Plush® Blue  
70000700



Plush® Deep Pink  
70000695



Plush® Deep Purple  
70004045



Plush® Lilac Pearl  
70006999



Plush® Red  
70008610



Plush® Rose  
70007000



Plush® Salmon  
70000701



Plush® White  
70000698

## Ramblin'<sup>™</sup>

PETUNIA PENDULA

- Ramblin' Petunias deliver efficient production with uniform, early flowering plants that have vigorous, yet controlled spreading plant habits
- Ideally suited for the main to late spring bedding season, plants are completely covered with flowers and offer growers and retailers flexibility in driving profitable spring programs
- Ramblin' offers consumers top return on their gardening investment with strong, spreading vigor that quickly fills garden beds with season-long flowering



Ramblin'<sup>™</sup> Amethyst  
70037015



Ramblin'<sup>™</sup> Sky Blue  
70061885



Ramblin'<sup>™</sup> Sugar Plum Imp.  
70041031



Ramblin'<sup>™</sup> Burgundy Chrome  
70021390



Ramblin'<sup>™</sup> Lavender  
70007896



Ramblin'<sup>™</sup> Lilac Glo  
70007897



Ramblin'<sup>™</sup> Neon Rose  
70007898



Ramblin'<sup>™</sup> Nu Blue  
70002882



Ramblin'<sup>™</sup> Peach Glo  
70007899



Ramblin'<sup>™</sup> Pink  
70007900



Ramblin'<sup>™</sup> Red  
70002889



Ramblin'<sup>™</sup> Salmon Capri  
70007901



Ramblin'<sup>™</sup> Shades O' Pink  
70002887



Ramblin'<sup>™</sup> Violet  
70007903



Ramblin'<sup>™</sup> White  
70002891



Ramblin'<sup>™</sup> Calypso Mix  
70020239



Ramblin'<sup>™</sup> Mix  
70006122



Ramblin'<sup>™</sup> Razzleberry Mix  
70020240

### Specifications

Height	10–14"
Width	30–36"
Habit	Spreading
USDA Zone	9–11
AHS Heat Zone	12–1
Forms Available	Pellets

### Recommended Containers

SIZE	PPP	FINISH TIME
1 qt	1	4–5 weeks
1.25 qt	1	5–6 weeks
2.5 qt	1–2	7–8 weeks
1.5 gal HB	3	7–8 weeks
2 gal HB	5	7–8 weeks

Plug crop time is 4–5 weeks depending on temperature, light level, plug size, and growing conditions.



# RANUNCULUS

## Maché™

RANUNCULUS ASIATICUS



- Stimulate early spring impulse sales with this irresistible crop
- Welcome consumers back to the garden center with large, fully double flowers and bright colors
- Reliable uniformity to meet the demands of growers and retailers — an early season option that excites consumers



Maché™ Orange  
70035061



Maché™ Pink  
70048730



Maché™ Purple  
70007138



Maché™ Red  
70035059



Maché™ Rose  
70007140



Maché™ Scarlet  
70007142



Maché™ White  
70035058



Maché™ Yellow  
70035060



Maché™ Bicolor Mix  
70027334



Maché™ Mix  
70007125



Maché™ Pastel Mix  
70000631

### Specifications

Height	12–16"
Width	10–12"
Habit	Upright
USDA Zone	7–11
AHS Heat Zone	12–1
Forms Available	Raw, Pellets

### Recommended Containers

SIZE	PPP	FINISH TIME
1 qt	1	12–15 weeks
1.25 qt	1	13–16 weeks
2.5 qt	1–2	13–16 weeks

Plug crop time is 8–10 weeks depending on temperature, light level, plug size, and growing conditions.

# RANUNCULUS

## Magic™

RANUNCULUS ASIATICUS



- Truly magical — no PGRs needed — genetically compact habit is ideal for easy growing in quart containers
- Versatile — plant in the garden or give as a gift pot
- Tidy plants are easy to ship and irresistible at retail

### Specifications

Height	6–8"
Width	4–6"
Habit	Upright
USDA Zone	7–11
AHS Heat Zone	12–1
Forms Available	Raw, Pellets

### Recommended Containers

SIZE	PPP	FINISH TIME
1 qt	1	14–16 weeks

Plug crop time is 8–10 weeks depending on temperature, light level, plug size, and growing conditions.



Magic™ Chocolate  
70063151



Magic™ Orange  
70007132



Magic™ Pink & Peach  
70039327



Magic™ Red  
70048731



Magic™ Rose  
70007134



Magic™ White  
70007135



Magic™ Yellow  
70007136



Magic™ Mix  
70004272

# RUDBECKIA

## TigerEye™

RUDBECKIA HIRTA



TigerEye™ Gold  
70024253

- The first and only F1 hybrid Rudbeckia with breakthrough uniformity and vigor
- Excellent PGR response enables use in a variety of containers and season-extender programs
- Strength on the bench and in the garden with long-lasting flowers and reduced sensitivity to powdery mildew

### Specifications

<b>Height</b>	16–24"
<b>Width</b>	16–24"
<b>Habit</b>	Upright
<b>USDA Zone</b>	6–11
<b>AHS Heat Zone</b>	12–1
<b>Forms Available</b>	Raw, Pellets

### Recommended Containers

SIZE	PPP	FINISH TIME
<b>1 qt</b>	1	9–10 weeks
<b>1.25 qt</b>	1	10–11 weeks
<b>2.5 qt</b>	1–2	10–11 weeks

Plug crop time is 5–6 weeks depending on temperature, light level, plug size, and growing conditions.

## Salsa®

SALVIA SPLENDENS



Salsa® Scarlet  
70007775



Salsa® Mix  
70007600

- Day-length neutral Salsa offers multiple quick turns per season
- Compact habit with short, sturdy flower spikes, is ideal for high density production in packs and small pots
- Offers excellent garden performance in sun or part shade

### Specifications

<b>Height</b>	8–10"
<b>Width</b>	8–10"
<b>Habit</b>	Upright
<b>USDA Zone</b>	8–10
<b>AHS Heat Zone</b>	12–1
<b>Forms Available</b>	Raw

### Recommended Containers

SIZE	PPP	FINISH TIME
<b>Packs</b>	1	4–5 weeks
<b>1 qt</b>	1–2	6–7 weeks

Plug crop time is 5–6 weeks depending on temperature, light level, plug size, and growing conditions.

## Liberty Classic™

ANTIRRHINUM MAJUS



- Upright, intermediate height plants with strong central flower stems provide a classic snapdragon with the strength to stand up tall at retail and in landscape beds
- Shapely flower spikes have a timeless appeal to consumers and can also be cut for use indoors

### Specifications

<b>Height</b>	18–22"
<b>Width</b>	12–14"
<b>Habit</b>	Upright
<b>USDA Zone</b>	8–11
<b>AHS Heat Zone</b>	12–1
<b>Forms Available</b>	Raw

### Recommended Containers

SIZE	PPP	FINISH TIME
<b>1 qt</b>	1–2	10–12 weeks
<b>1.25 qt</b>	2–3	10–12 weeks
<b>2.5 qt</b>	3	10–12 weeks
<b>3 qt</b>	3–5	10–12 weeks

Plug crop time is 6–7 weeks depending on temperature, light level, plug size, and growing conditions.



Liberty Classic™ Bronze  
70006428



Liberty Classic™ Crimson  
70017981



Liberty Classic™ Lavender  
70017916



Liberty Classic™ Rose Pink  
70017918



Liberty Classic™ White  
70017983



Liberty Classic™ Yellow  
70024501



Liberty Classic™ Mix  
70017986

## Madame Butterfly™

ANTIRRHINUM MAJUS



- A unique range of tall, double-azalea flower snapdragons that create extra full and graceful flower spikes
- Striking at the back of borders and when cut and used for indoor floral arrangements

### Specifications

<b>Height</b>	24–30"
<b>Width</b>	14–16"
<b>Habit</b>	Upright
<b>USDA Zone</b>	8–11
<b>AHS Heat Zone</b>	12–1
<b>Forms Available</b>	Raw

### Recommended Containers

SIZE	PPP	FINISH TIME
<b>1 qt</b>	1–2	10–12 weeks
<b>1.25 qt</b>	2–3	10–12 weeks
<b>2.5 qt</b>	3	10–12 weeks
<b>3 qt</b>	3–5	10–12 weeks

Plug crop time is 6–7 weeks depending on temperature, light level, plug size, and growing conditions.



Madame Butterfly™ Mix  
70017984

Madame Butterfly™ Cherry Bronze 70041197  
Madame Butterfly™ Ivory 70041198  
Madame Butterfly™ Pink 70041199  
Madame Butterfly™ Red 70041200

Madame Butterfly™ Rose 70041201  
Madame Butterfly™ Yellow 70051896  
Madame Butterfly™ Bronze 70051944  
Madame Butterfly™ Mix 70017984

# SNAPDRAGON

## Montego™

ANTIRRHINUM MAJUS



- Early and very uniform flowering dwarf series, ideal for production in packs and small pots
- Basal-branching with strong stems that hold up in production, shipping, and at retail
- Excellent garden performance — multi-flowering with blooms held just above deep green foliage



Montego™ Burgundy Bicolor  
70001203



Montego™ Orange Bicolor  
70001201



Montego™ Pink  
70001187



Montego™ Purple  
70001180



Montego™ Red  
70018020



Montego™ Rose  
70017994



Montego™ Rose Bicolor  
70001199



Montego™ Scarlet  
70002572



Montego™ Sunset  
70018005



Montego™ Violet  
70001185



Montego™ White  
70001195



Montego™ Yellow  
70001178

### Specifications

Height	6–8"
Width	6–8"
Habit	Mounded
USDA Zone	8–11
AHS Heat Zone	12–1
Forms Available	Raw, Pellets

### Recommended Containers

SIZE	PPP	FINISH TIME
Packs	1	4–5 weeks
1 pt	1	5–6 weeks
1 qt	1–2	6–7 weeks

Plug crop time is 6–7 weeks depending on temperature, light level, plug size, and growing conditions.

## Snaptastic™

ANTIRRHINUM MAJUS



- **THE NEXT GENERATION OF MULTI-SEASON SNAPDRAGONS**
- Reduced sensitivity to day length allows faster flowering in early spring, creating an easier to program crop
- Stands up to the environmental challenges of warm season production for late summer/fall sales
- Vigorous plants with sturdy branching habits are quick to fill containers; superior stem strength holds up to the rigors of shipping and retail



### Specifications

<b>Height</b>	14–16"
<b>Width</b>	14–16"
<b>Habit</b>	Upright
<b>USDA Zone</b>	8–11
<b>AHS Heat Zone</b>	12–1
<b>Forms Available</b>	Raw, Pellets

### Recommended Containers

SIZE	PPP	FINISH TIME
<b>1 pt</b>	1	7–8 weeks
<b>1 qt</b>	1	7–8 weeks
<b>1.25 qt</b>	1–2	7–8 weeks
<b>2.5 qt</b>	1–2	7–8 weeks
<b>3 qt</b>	3	7–8 weeks
<b>1.5 gal</b>	3–5	7–8 weeks

Plug crop time is 6–7 weeks depending on temperature, light level, plug size, and growing conditions.

# SNAPDRAGON



Snaplastic™ Magenta  
70048621



Snaplastic™ Orange Flame  
70048614



Snaplastic™ Pink  
70048619



Snaplastic™ Red  
70048616



Snaplastic™ Yellow  
70048611



Snaplastic™ Mix  
70069302

## Duchess™

TORENIA FOURNIERI



- Tight, mounding habits are ideally suited for bedding plant production
- Early to flower, compact and uniform for both flower timing and plant habit
- Works well in mixed containers and is great for both sunny and shady garden beds

### Specifications

Height	6–8"
Width	6–8"
Habit	Mounded
USDA Zone	10–11
AHS Heat Zone	9–1
Forms Available	Pellets

### Recommended Containers

SIZE	PPP	FINISH TIME
Packs	1	7–8 weeks
1 qt	1	8–9 weeks

Plug crop time is 4–5 weeks depending on temperature, light level, plug size, and growing conditions.



Duchess™ Blue & White  
70020963



Duchess™ Burgundy  
70020960



Duchess™ Deep Blue  
70020961



Duchess™ Pink  
70020959



Duchess™ Mix  
70020958

# SUNFLOWER



HELIANTHUS HYBRIDA



- **ENDLESS BLOOMS. ALL SEASON LONG.™**
- Sunfinity the next generation of sunflower that offers nonstop blooming, multiple branches and more flowers all season long
- Provides incredible consumer value with superior branching, producing multiple flowers per plant, and providing season-long flowering in both gardens and patio containers
- Sunfinity is a facultative long day plant offering fast crop times well-suited for late spring and early summer
- Sunfinity extends the retail sales season with a premium product offer, ideal in 2.5 qt. and larger containers for landscape use or larger patio pots

## Specifications

Height	48"
Width	24–32"
Habit	Upright
USDA Zone	9–11
AHS Heat Zone	12–1
Forms Available	Raw

## Recommended Containers

SIZE	PPP	FINISH TIME
2.5 qt	1	7–8 weeks
3 qt	1–2	7–8 weeks
1.5 gal	2–3	7–8 weeks
2.5 gal	2–3	7–8 weeks
3 gal	3–4	8–9 weeks
3.5 gal	3–4	8–9 weeks
5 gal	3–4	8–9 weeks

Plug crop time is 4 weeks depending on temperature, light level, plug size, and growing conditions.



Sunfinity™ Yellow Dark Center  
70052829



## Obsession™ Cascade

VERBENA HYBRIDA



- A CASCADE OF COLOR PACKED WITH VALUE
- The first ever trailing Verbena from seed
- Ideal for value added baskets and combinations
- Seed product form makes production and planning easier to execute
- Featured in the new Seedsations™ Twist Of Purple Mix

### Specifications

Height	8–10"
Width	18–24"
Habit	Spreading
USDA Zone	9–11
AHS Heat Zone	12–1
Forms Available	Raw, Primed

### Recommended Containers

SIZE	PPP	FINISH TIME
1 qt	1	7–8 weeks
1.25 qt	1–2	7–8 weeks
2.5 qt	1–2	7–8 weeks
3 qt	2–3	8–9 weeks
1.5 gal HB	3–4	8–9 weeks
1.5 gal	3–4	8–9 weeks

Plug crop time is 6–7 weeks depending on temperature, light level, plug size, and growing conditions.



Obsession™ Cascade Pink Shades  
70054939



Obsession™ Cascade Purple Shades  
with Eye  
70065566



Obsession™ Cascade Red with Eye  
70021278



Obsession™ Cascade Scarlet  
70065564



Obsession™ Cascade Twister™ Violet  
70038870

## Obsession™

VERBENA HYBRIDA

- **PERFECT FOR PACKS**
- High uniformity makes production a breeze
- Fantastic choices in bold colors and top notch mixes
- The best Verbena for efficiency and ease of production

### Specifications

Height	6–8"
Width	10–12"
Habit	Mounded
USDA Zone	9–11
AHS Heat Zone	12–1
Forms Available	Raw, Primed

### Recommended Containers

SIZE	PPP	FINISH TIME
Packs	1	5–6 weeks
1 qt	1	6–8 weeks

Plug crop time is 6–7 weeks depending on temperature, light level, plug size, and growing conditions.



Obsession™ Apricot  
70021267



Obsession™ Blue with Eye  
70000522



Obsession™ Bordeaux  
70000517



Obsession™ Burgundy with Eye  
70000520

# VERBENA



Obsession™ Coral with Eye  
70000523



Obsession™ Crimson with Eye  
70000528



Obsession™ Lavender  
70000516



Obsession™ Light Blue with Eye  
70000525



Obsession™ Lilac  
70000538



Obsession™ Pink  
70000524



Obsession™ Pink Chiffon  
70000532



Obsession™ Red  
70000527



Obsession™ Red with Eye  
70000534



Obsession™ Scarlet  
70000533



Obsession™ Twister™ Purple  
70060507



Obsession™ Twister™ Red  
70060510



Obsession™ White  
70000515



Obsession™ Berry Tart Mix  
70021259



Obsession™ Cotton Candy Mix  
70021260



Obsession™ Eyed Mix  
70000529



Obsession™ Mix  
70000521



Obsession™ Pastel Mix  
70000530



Obsession™ Spirit Mix  
70021253



Obsession™ Wine & Cheese Mix  
70021258

## Tuscany™

VERBENA HYBRIDA



- **BIG BLOOMS AND BOLD COLORS THAT LAST**
- Upright habits are perfect for small to medium sized containers
- Strong garden vigor outlasts other Verbena
- Rich and novelty colors bring added value and interest to premium programs



### Specifications

Height	8–10"
Width	10–12"
Habit	Upright
USDA Zone	9–11
AHS Heat Zone	12–1
Forms Available	Raw, Primed

### Recommended Containers

SIZE	PPP	FINISH TIME
Packs	1	6–8 weeks
1 qt	1	7–9 weeks
2.5 qt	2–3	9–10 weeks

Plug crop time is 6–7 weeks depending on temperature, light level, plug size, and growing conditions.



Tuscany™ Blue  
70024254



Tuscany™ Burgundy with Eye  
70024255



Tuscany™ Lavender Picotee  
70024256



Tuscany™ Orchid Frost  
70024257



Tuscany™ Peach  
70024258



Tuscany™ Pink Picotee  
70024259



Tuscany™ Rose with Eye  
70024260



Tuscany™ Scarlet  
70024261



Tuscany™ Scarlet with Eye  
70049119



Tuscany™ White  
70024264



Tuscany™ Mix  
70007911



Tuscany™ Pastel Mix  
70021305

## Cora® Cascade

CATHARANTHUS ROSEUS



- Cora's trailing 'cousin' powered similarly by high levels of built-in disease resistance to many strains of aerial Phytophthora
- A mounded and spreading habit makes Cora Cascade ideal for summer baskets, mixed containers and large landscape beds
- F1 hybrid uniformity and vigor build a premium package not found in other trailing Vinca
- Large, high-quality flowers completely cover plants creating blankets of color lasting all season long



### Specifications

Height	6–8"
Width	32–36"
Habit	Spreading
USDA Zone	9–11
AHS Heat Zone	12–1
Forms Available	Raw

### Recommended Containers

SIZE	PPP	FINISH TIME
1 qt	1–2	8–9 weeks
1.25 qt	2–3	8–9 weeks
2.5 qt	2–3	8–9 weeks
3 qt	3	9–10 weeks
1.5 gal HB	3–5	10–11 weeks

Plug crop time is 5–7 weeks depending on temperature, light level, plug size, and growing conditions.



Cora® Cascade Apricot  
70038520



Cora® Cascade Cherry  
70018421



Cora® Cascade Lilac  
70018417



Cora® Cascade Peach Blush  
70018419



Cora® Cascade Polka Dot  
70018420



Cora® Cascade Strawberry  
70038521



Cora® Cascade Violet  
70051971



Cora® Cascade Mix  
70018422

## Cora®

CATHARANTHUS ROSEUS



- Proven performance, powered by high levels of built-in disease resistance to many strains of aerial Phytophthora, will have customers coming back year after year
- Robust plants handle the stress of extreme heat and humidity – the vinca-of-choice for southern regions
- Huge flowers quickly create a blanket of color that lasts all season long



### Specifications

Height	14–16"
Width	18–20"
Habit	Mounded
USDA Zone	9–11
AHS Heat Zone	12–1
Forms Available	Raw

### Recommended Containers

SIZE	PPP	FINISH TIME
Packs	1	5–8 weeks
1 pt	1	7–8 weeks
1 qt	1–2	8–9 weeks
1.25 qt	3	8–9 weeks
2.5 qt	3	8–9 weeks

Plug crop time is 5–7 weeks depending on temperature, light level, plug size, and growing conditions.



Cora® Apricot  
70041220



Cora® Burgundy  
70018347



Cora® Deep Lavender  
70018348



Cora® Lavender  
70018349



Cora® Pink  
70018351



Cora® Punch  
70018352



Cora® Red  
70035155



Cora® Strawberry  
70035151



Cora® Violet  
70018373



Cora® White  
70018374



Cora® Mix  
70018350

## SunStorm®

CATHARANTHUS ROSEUS



- Early flowering and compact habit — the perfect choice for packs and small pots
- Low input costs for profitable high-density production
- Well-branched and naturally free flowering plants require little to no PGRs



SunStorm® Apricot  
70001114



SunStorm® Blush  
70006504



SunStorm® Bright Red  
70001128



SunStorm® Deep Lilac  
70001133



SunStorm® Deep Orchid  
70006501



SunStorm® Deep Pink  
70018320



SunStorm® Light Blue  
70006505



SunStorm® Orchid Halo  
70018333



SunStorm® Pure White  
70001134



SunStorm® Purple  
70018358



SunStorm® Red  
70018328



SunStorm® Red Halo  
70028295



SunStorm® Rose with Eye  
70001129



SunStorm® White with Eye  
70001116



SunStorm® Mix  
70001120

### Specifications

Height	8–10"
Width	10–12"
Habit	Mounded
USDA Zone	9–11
AHS Heat Zone	12–1
Forms Available	Raw

### Recommended Containers

SIZE	PPP	FINISH TIME
Packs	1	4–6 weeks
1 pt	1	5–8 weeks
1 qt	1–2	6–8 weeks
1.25 qt	3	7–8 weeks

Plug crop time is 5–7 weeks depending on temperature, light level, plug size, and growing conditions.



## Endurio®

VIOLA CORNUTA F1

- **WINTER SURVIVOR – FROST AND SNOW TOLERANT SPREADING VIOLA**
- Outstanding tolerance for winter-cold makes Endurio exceptional for overwintering
- With a tight, mounded crown and spreading lateral shoots, Endurio fills and spills in containers quickly, for efficient production and remarkable shelf appeal
- Near day-neutral flowering provides reliable color for early spring and fall production



Endurio® Blue Yellow with Purple Wing  
70000467



Endurio® Lavender  
70003001



Endurio® Pink Shades  
70021212



Endurio® Pure Violet  
70000479



Endurio® Red Flare  
70058789



Endurio® Red with Yellow Face  
70000478



Endurio® Sky Blue Martien  
70007721



Endurio® White  
70000492



Endurio® Yellow Imp.  
70058786



Endurio® Yellow with Purple Wing  
70021214



Endurio® Yellow with Red Wing  
70000471

### Specifications

Height	4–6"
Width	8–12"
Habit	Spreading
USDA Zone	7–10
AHS Heat Zone	9–1
Forms Available	Raw, PreNova® 2.0

### Recommended Containers

SIZE	PPP	FINISH TIME
Packs	1	4–5 weeks
1 qt	1–2	5–6 weeks
1.25 qt	2–3	6–7 weeks
2.5 qt	2–3	6–7 weeks
1.5 gal HB	5	7–9 weeks

Plug crop time is 4–5 weeks depending on temperature, light level, plug size, and growing conditions.

## Penny™

VIOLA CORNUTA F1

- Early flowering and uniformity across a wide range of colors make Penny suited for high density production in packs and small pots for both fall and spring
- Tightly branched and non-stretching habit under warm conditions offers longer shelf life and reduces the need for PGRs
- A multitude of flowers creates long-lasting landscape displays, and a strong root system ensures reliable overwintering performance



### Specifications

Height	4–6"
Width	4–6"
Habit	Mounded
USDA Zone	7–10
AHS Heat Zone	9–1
Forms Available	Raw, PreNova® 2.0

### Recommended Containers

SIZE	PPP	FINISH TIME
Packs	1	4–5 weeks
1 qt	1–2	5–6 weeks
1.25 qt	3	6–7 weeks

Plug crop time is 4–5 weeks depending on temperature, light level, plug size, and growing conditions.



Penny™ Yellow Jump-up Imp.  
70059685



Penny™ Azure Dawn  
70035185



Penny™ Azure Wing  
70007888



Penny™ Beaconsfield  
70021035



Penny™ Black  
70059706



Penny™ Blue  
70007737



Penny™ Clear Yellow  
70021163



Penny™ Deep Blue  
70007889

# VIOLA



Penny™ Deep Marina  
70000490



Penny™ Denim Jump-up  
70035184



Penny™ Marina  
70002991



Penny™ Marlies  
70007677



Penny™ Mickey  
70021101



Penny™ Orange  
70003023



Penny™ Orange Jump-up  
70021030



Penny™ Peach Jump-up  
70003010



Penny™ Primrose Bicolor  
70021102



Penny™ Primrose Blotch  
70021183



Penny™ Primrose Picotee  
70008662



Penny™ Purple Marina  
70007528



Penny™ Purple Picotee  
70003018



Penny™ Red Blotch  
70002985



Penny™ Red Wing  
70007250



Penny™ Rose Blotch  
70021103



Penny™ Violet  
70021017



Penny™ Violet Flare  
70020978



Penny™ White  
70021032



Penny™ White Blotch  
70003017

# VIOLA



Penny™ White Jump-up  
70000481



Penny™ Yellow  
70008221



Penny™ Yellow Blotch  
70021036



Penny™ All Seasons Mix  
70021065



Penny™ Citrus Mix  
70021044



Penny™ Jump-up Mix  
70021045



Penny™ Lane Mix  
70020977



Penny™ Winter Mix  
70021047

## Swizzle™

ZINNIA ELEGANS



Swizzle™ Cherry & Ivory  
70003053



Swizzle™ Scarlet & Yellow  
70004413

- Eye-catching, fully double, and bicolor flowers demand attention on the retail bench
- Full, bushy plants covered with blooms are perfect for premium quart or larger pot program
- A heat loving plant with season extending properties and strong garden vigor

### Specifications

<b>Height</b>	12–14"
<b>Width</b>	10–12"
<b>Habit</b>	Upright
<b>USDA Zone</b>	10–11
<b>AHS Heat Zone</b>	12–1
<b>Forms Available</b>	Raw, SatinCoat™

### Recommended Containers

SIZE	PPP	FINISH TIME
<b>1 qt</b>	1	7–8 weeks
<b>1.25 qt</b>	2–3	7–8 weeks
<b>2.5 qt</b>	3	7–8 weeks

Plug crop time is 2–3 weeks depending on temperature, light level, plug size, and growing conditions.

## Magellan™

ZINNIA ELEGANS



- Very grower friendly — bred for exceptional performance on the bench and in the garden
- Superior flower quality — large, fully double blooms in clean, bright colors
- Excellent choice for quick-turn, high profit summer programs

### Specifications

<b>Height</b>	12–14"
<b>Width</b>	10–12"
<b>Habit</b>	Upright
<b>USDA Zone</b>	10–11
<b>AHS Heat Zone</b>	12–1
<b>Forms Available</b>	Raw, SatinCoat™

### Recommended Containers

SIZE	PPP	FINISH TIME
<b>1 qt</b>	1	7–8 weeks
<b>1.25 qt</b>	2–3	7–8 weeks
<b>2.5 qt</b>	3	7–8 weeks

Plug crop time is 2–3 weeks depending on temperature, light level, plug size, and growing conditions.



Magellan™ Cherry  
70024500



Magellan™ Coral  
70024496



Magellan™ Ivory  
70024495



Magellan™ Orange  
70024494



Magellan™ Pink  
70024497



Magellan™ Salmon  
70024498



Magellan™ Scarlet  
70007420



Magellan™ Yellow  
70024499



Magellan™ Mix  
70021362

## Uproar™

ZINNIA ELEGANS



- Tall growing, well branched Zinnia with bright rose fully double flowers
- A traditional summer favorite that can extend the sales season when offered in large premium containers
- Can be direct sown for economical production, reducing transplanting and labor costs



Uproar™ Rose  
70021364

### Specifications

<b>Height</b>	28–36"
<b>Width</b>	24–27"
<b>Habit</b>	Upright
<b>USDA Zone</b>	10–11
<b>AHS Heat Zone</b>	12–1
<b>Forms Available</b>	Raw, SatinCoat™

### Recommended Containers

SIZE	PPP	FINISH TIME
<b>1.25 qt</b>	2–3	7–8 weeks
<b>2.5 qt</b>	3	7–8 weeks
<b>1.5 gal</b>	5	8–9 weeks

Plug crop time is 2–3 weeks depending on temperature, light level, plug size, and growing conditions.

## Short Stuff™

ZINNIA ELEGANS



- Short in stature but not in flower power, this compact growing Zinnia sports high quality double flowers in a range of bright colors
- Perfectly sized and uniform growing for easy production in packs and small pots for bedding use
- A heat loving annual perfect for late spring and summer retail sales

### Specifications

<b>Height</b>	8–10"
<b>Width</b>	10–12"
<b>Habit</b>	Upright
<b>USDA Zone</b>	10–11
<b>AHS Heat Zone</b>	12–1
<b>Forms Available</b>	Raw, SatinCoat™

### Recommended Containers

SIZE	PPP	FINISH TIME
<b>Packs</b>	1	6–7 weeks
<b>1 qt</b>	1	7–8 weeks

Plug crop time is 2–3 weeks depending on temperature, light level, plug size, and growing conditions.



Short Stuff™ Cherry Shades  
70021361



Short Stuff™ Coral  
70021355



Short Stuff™ Deep Red  
70021356



Short Stuff™ Gold  
70021352



Short Stuff™ Orange  
70021358



Short Stuff™ Scarlet  
70021359



Short Stuff™ White  
70021360



Short Stuff™ Mix  
70021357

## Zowie!™

ZINNIA ELEGANS



- A vigorous and well branched Zinnia with striking, fully double bicolor flowers
- A season-extending heat lover that is ideal for large premium container summer programs
- Strong landscape vigor well suited for use in the middle or back of sunny garden beds



Zowie!™ Yellow Flame  
70021363

### Specifications

<b>Height</b>	24–30"
<b>Width</b>	24–27"
<b>Habit</b>	Upright
<b>USDA Zone</b>	10–11
<b>AHS Heat Zone</b>	12–1
<b>Forms Available</b>	Raw, Coated

### Recommended Containers

SIZE	PPP	FINISH TIME
<b>1.25 qt</b>	2–3	7–8 weeks
<b>2.5 qt</b>	3	7–8 weeks
<b>1.5 gal</b>	5	8–9 weeks

Plug crop time is 2–3 weeks depending on temperature, light level, plug size, and growing conditions.

# SPECIALTY MIXTURES

## Gazania

### KISS™

**Flame Mix:** Kiss Flame Ingredient, Kiss Yellow Flame\*

**Frosty Flame Mix:** Segregating Hybrid\*

## Gerbera

### JAGUAR™

**Fall Colors Mix:** Fire, Fire Dark Center, Orange Picotee, Red, Scarlet Shades Dark Center, Yellow, Yellow Dark Center

**Salsa Mix:** Deep Orange, Orange Picotee, Red, Scarlet Shades Dark Center, Yellow, Yellow Dark Center

**Springtime Mix:** Deep Orange, Deep Rose, Pink, Salmon, Yellow

## Impatiens

### ACCENT™ PREMIUM

**Mystic Mix:** Lavender Blue, Premium Bright Eye, Premium Lilac, Premium Violet

**Pastel Mix:** Premium Bright Eye, Premium Pink, Premium Rose, Premium White

**Peppermint Mix:** Premium Bright Eye, Premium Pink, Premium Red, Premium Rose

### ACCENT™

**Star Mix:** Premium Orange Star, Premium Violet Star, Red Star, Rose Star

### XTREME™

**Hot! Mix:** Red, Salmon, Scarlet, White

**Little Gem Mix:** Lavender, Pink, Violet, White

**Pastel Mix:** Lavender, Pink, Salmon, White

**Rosy Mix:** Pink, Rose, Violet, White

**Sapphire Mix:** Lavender, Pink, Violet

**Tango Mix:** Red, Rose, Salmon

**Utopia Mix:** Lavender, Rose, Salmon, Violet

## Pansy

### COLOSSUS™

**Blotched Mix:** Deep Blue with Blotch, Purple with Blotch, Red with Blotch, Rose with Blotch, White with Blotch, Yellow with Blotch

### DELTA™ PREMIUM

**Apple Cider Mix:** Premium Pure Primrose, Premium Rose with Blotch, Premium Tapestry

**Blotch Mix:** Premium Deep Blue with Blotch, Premium Neon Violet, Premium Red with Blotch, Premium Rose with Blotch, Premium White with Blotch, Premium Yellow with Blotch, Premium Yellow with Purple Wing

**Buttered Popcorn Mix:** Premium Pure Golden Yellow, Premium Pure Primrose, Premium Pure White

### DELTA™

**Cool Waters Mix:** Premium Blue with Blotch, Premium Pure Light Blue, Premium Pure White, Premium True Blue

**Berry Tart Mix:** Premium Blue with Blotch, Premium Pure Light Blue, Premium Pure Violet, Pure Rose

**Blaze Mix:** Fire, Premium Pure Golden Yellow, Premium Yellow with Blotch, Pure Red

**Citrus Mix:** Karma Lemon, Premium Pure Golden Yellow, Premium Pure Orange, Premium Pure White

*Continues on next page...*

\*A segregating hybrid is where the seed from the hybrid segregates into several different colors making a mix.



Delta™ Premium Gold with Blotch Pansy

# SPECIALTY MIXTURES

## Pansy

### DELTA™ (CONTINUED)

**Cotton Candy Mix:** Pink Shades, Premium Pure Light Blue

**Monet Mix:** Pure Rose, Lavender Blue Shades, Pink Shades, Premium Pure GoldenYellow, Premium True Blue

**Pumpkin Pie Mix:** Fire, Karma Lemon, Orange with Blotch, Premium Pure Orange, Premium Pure Primrose, Premium Pure White

**Pure Colors Mix:** Premium Karma Lemon, Premium Pure Light Blue, Premium Pure Orange, Premium Pure Primrose, Premium Pure Violet, Premium Pure White, Premium Pure Yellow, Premium True Blue, Pure Red, Pure Rose

**Tri-Color Mix:** Karma Lemon, Premium Pure Light Blue, Premium Pure Violet

**Watercolors Mix:** Lavender Blue Shades, Pink Shades, Premium Pure Light Blue, Premium Pure Orange, Premium Pure Primrose, Premium Pure White

**Wine & Cheese Mix:** Premium Pure Primrose, Premium Pure Violet, Pure Red

### MAMMOTH®

**Masquerade Mix:** Big Red, Blue-ti-ful, Deep Blue Dazzle, Glamarama White, On Fire, Queen Yellow Bee, Rocky Rose, Sangria Punch, Viva La Violet

## Petunia

### FROST™

**Mix:** Fire, Cherry, Blue, Velvet

### HURRAH™

**Blueberry Muffin Mix:** Blue, Blue Vein, Lavender Tie-dye

### TRITUNIA™

**Pro Formula Mix:** Red, Blue, White, Pink, Salmon, Rose, Burgundy, Lavender

**Star Mix:** Blue Star, Crimson Star, Purple Star, Red Star, Rose Star

**Veined Mix:** Blue Veined, Pink Veined, Plum, Salmon Veined

### RAMBLIN'™

**Calypso Mix:** Neon Rose, Peach Glo, Salmon Capri

**Razzleberry Mix:** Burgundy Chrome, Lilac Glo, Nu Blue

## Ranunculus

### MACHE™

**Bicolor Mix:** Segregating Hybrid\*

**Pastel Mix:** Segregating Hybrid\*

## Verbena

### OBSESSION™

**Berry Tart Mix:** Segregating Hybrid\*

**Cotton Candy Mix:** Segregating Hybrid\*

**Eyed Mix:** Blue with Eye, Burgundy with Eye, Coral with Eye, Light Blue with Eye, Red with Eye, White

**Pastel Mix:** Apricot, Coral with Eye, Light Blue with Eye, Pink, Pink Chiffon, White

**Spirit Mix:** Red, White, Blue with Eye

**Wine & Cheese Mix:** Apricot, Blue with Eye, Burgundy with Eye

### TUSCANY™

**Pastel Mix:** Lavender Picotee, Peach, Pink Picotee, White

## Viola

### PENNY™

**All Seasons Mix:** Blue, Deep Blue, Orange, Primrose Bicolor, Yellow

**Citrus Mix:** Orange, Primrose Bicolor, Yellow

**Jump-Up Mix:** Orange Jump-Up, Peach Jump-Up, White Jump-Up, Yellow Jump-Up

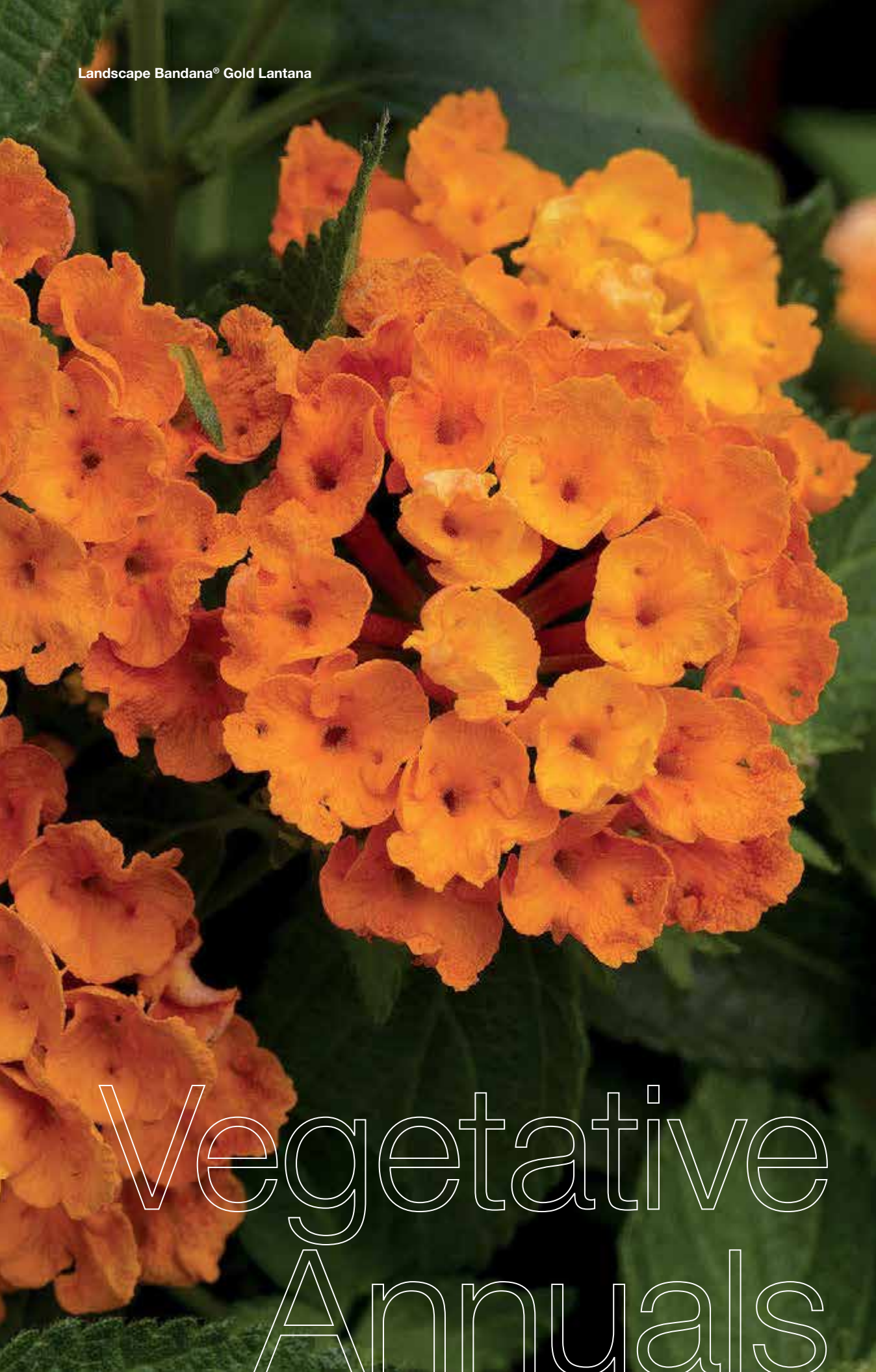
**Lane Mix:** A mix of 18 of the best Penny colors

**Winter Mix:** Azure Wing, Blue, Primrose Bicolor

\*A segregating hybrid is where the seed from the hybrid segregates into several different colors making a mix.



Landscape Bandana® Gold Lantana



# Vegetative Annuals



# Cutting Time™

## CALLUSED CUTTING PROGRAM

From the pioneers of the callused cutting, Syngenta Flowers introduces the Cutting Time™ program. Nobody knows callused cuttings better than we do, and the Cutting Time™ program marks a major expansion of our vegetative offer.

Developed and supported by our Supply Chain and Customer Solutions teams, the Cutting Time™ program offers unique value to growers:

- **Quicker turns:** Reduce crop time by an average of two-to-three weeks
- **Simplified production:** Easier to handle and require little-to-no special propagation equipment
- **Strong to the finish:** Promote strong branching for a fuller finish with less reliance on plant growth regulators
- **Reliable quality:** All species in the Cutting Time™ program have been extensively trialed end-to-end from callus uniformity at the production farm through direct-stick quart finished production

# PROGRAM BENEFITS

## PROPAGATION BENEFITS

- Less misting required (both in frequency and duration)
- Increased rooting uniformity among liners mitigates potential losses
- Shorter production time to finish liners
- Less shrinkage in less-than-optimal propagation conditions
- Cutting Time™ cuttings are screened twice prior to shipping to provide uniformity

## LABOR BENEFITS

- No unpacking and moving rooted liner trays
- Callused cuttings are only stuck/transplanted once
- Callused cuttings can be directly stuck into pots positioned in their final growing location
- Faster sticking time compared with transplanting rooted liners
- Shorter finishing time

## FINISHED QUALITY BENEFITS

- Improved branching due to greater light exposure
- Increased flower count at the point of sale

## Dipladenia Madinia™

- Callus development is apparent at the base and sides of the cutting
- Reduce leaf drop and yellowing in propagation – Cutting Time™ cuttings develop initial roots quickly
- Reduce 105 tray propagation by 2-3 weeks
- Accelerate quart production by 2-3 weeks with direct-stick method; no pinch required as laterals branch easily



Cutting Time™ cutting  
Upon arrival at grower



Left: URC Right: CC  
3 weeks after sticking



Madinia™ Hot Pink dipladenia,  
11 weeks after sticking  
Left: URC Right: CC

Species	Product form	Container	Days under mist¹	Weeks to finish at 70° F ADT₂	Pinch	PGRs
Mandevilla hybrida	CC – direct stick	Quart	6-10	9-10	Optional	Yes

## Gaillardia Sunrita®

- Callus development is visible at the base of the cutting stem
- Greater lateral branching promotes more flowers at the time of sale to increase sell-through



Cutting Time™ cutting  
Upon arrival at grower



Left: URC Right: CC  
3 weeks after sticking



Gaillardia Sunrita® Burgundy,  
8 weeks after sticking  
Left: URC Right: CC

Species	Product form	Container	Days under mist¹	Weeks to finish at 70° F ADT₂	Pinch	PGRs
Gaillardia aristata	CC – direct stick	Quart	3-6	8-9	Yes	Yes

## Geranium – All Series

- Cutting Time™ cuttings are a very economical way to finish high-density, pot-tight quarts
- Callus development is apparent at the base of the cutting stem
- On average expect roots to reach the sides of quart containers in 10-12 days



Cutting Time™ cutting  
Upon arrival at grower



Geranium Tango™ Salmon,  
7 weeks after sticking  
Left: URC Right: CC

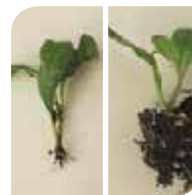
Species	Product form	Container	Days under mist¹	Weeks to finish at 70° F ADT₂	Pinch	PGRs
Pelargonium hybrids	CC – direct stick	Quart	2-4	8-9	No	Yes

## Heliotropium Scentropia™

- Callus development is visible at the base and sides of the cutting



Cutting Time™ cutting  
Upon arrival at grower



Left: URC Right: CC  
1 week after sticking



Heliotropium Scentropia™  
Dark Blue, 7 weeks after sticking  
Left: URC Right: CC

Species	Product form	Container	Days under mist¹	Weeks to finish at 70° F ADT₂	Pinch	PGRs
Heliotropium arborescens	CC – direct stick	Quart	3-6	7-8	Optional	Yes

# PROGRAM BENEFITS

## Lantana Bandana® – All Series

- Cutting Time™ cuttings finish up to 2-3 weeks earlier than URCs, enabling Northern growers to ship Lantana earlier than ever before
- Bandito™ is a great option for Southern growers seeking a quick-finish, high-density quart program
- Callus development is visible at the base of the cutting stem



Cutting Time™ cutting  
Upon arrival at grower



Left: URC  
3 weeks after sticking  
Right: CC



Lantana Bandana® Cherry  
Sunrise, 8 weeks after sticking  
Left: URC Right: CC

Species	Product form	Container	Days under mist <sup>1</sup>	Weeks to finish at 70° F ADT <sub>2</sub>	Pinch	PGRs
Lantana camara	CC – direct stick	Quart	4-7	8-9	Yes	Yes

## Osteospermum Tradewinds®

- Reduce early spring energy costs by bringing in Cutting Time™ Osteospermum cuttings two weeks later than URCs
- Callus development is visible at the base of the cutting stem



Cutting Time™ cutting  
Upon arrival at grower



Left: URC  
1 week after sticking  
Right: CC



Osteospermum Tradewinds®  
Yellow, 7 weeks after sticking  
Left: URC Right: CC

Species	Product form	Container	Days under mist <sup>1</sup>	Weeks to finish at 70° F ADT <sub>2</sub>	Pinch	PGRs
Osteospermum ecklonis	CC – direct stick	Quart	5-7	8-9	Yes	Yes

## Pentas – All Series

- On average reduce propagation time in 105-cell trays by two weeks
- Increase rooting uniformity among liners

Species	Product form	Container	Days under mist <sup>1</sup>	Weeks to finish at 70° F ADT <sub>2</sub>	Pinch	PGRs
Pentas lanceolata	CC – direct stick	Quart	4-7	9-10	Yes	Yes

## Poinsettia – All Series

- Cutting Time™ poinsettia cuttings shave 2-3 weeks off production schedules for 4.5” to 6.5” containers
- Multiple container sizes – from 4.5” to 10” – are well suited to production with Cutting Time™ cuttings; weeks to finish will vary by container size



Cutting Time™ cutting  
Upon arrival at grower



Unrooted cutting

Species	Product form	Container	Days under mist <sup>1</sup>	Weeks to finish at 70° F ADT <sub>2</sub>	Pinch	PGRs
Euphorbia pulcherrima	CC – direct stick	Quart	4-7	10-14	Yes	Yes

## Scaevola Bombay®

- Cutting Time™ cuttings shorten the production cycle and maximize greenhouse efficiency, especially for season-extending programs



Cutting Time™ cutting  
Upon arrival at grower



Left: URC  
3 weeks after sticking  
Right: CC

Species	Product form	Container	Days under mist <sup>1</sup>	Weeks to finish at 70° F ADT <sub>2</sub>	Pinch	PGRs
Scaevola aemula	CC – direct stick	Quart	3-6	8-9	Yes	Yes

## Vinca Nirvana® Cascade

- Although callus development is subtle, root initials quickly develop at the base of the cutting



Cutting Time™ cutting  
Upon arrival at grower



Left: URC  
3 weeks after sticking  
Right: CC

Species	Product form	Container	Days under mist <sup>1</sup>	Weeks to finish at 70° F ADT <sub>2</sub>	Pinch	PGRs
Vinca Catharanthus roseus	CC – direct stick	Quart	4-7	7-8	Yes	Yes

### Notes:

<sup>1</sup>Under normal growing conditions, use misting durations at the lower end of this range. Warm and stressful conditions can increase misting requirements.

<sup>2</sup>Average daily temperature

# Cutting Time™

## CALLUSED CUTTING PROGRAM

The Cutting Time™ program from Syngenta Flowers delivers a reliable, uniform and profitable product. Cutting Time™ cuttings require less bench space and reduce propagation risks and losses, resulting in robust, uniform plants in less time than vegetative material grown with traditional production methods.

The Cutting Time™ program spans a broad range of series, including several traditionally difficult-to-propagate species:

- **Dipladenia Madinia™**
- **Gaillardia Sunrita®**
- **Geranium – All Series**
- **Heliotrope Scentropia™**
- **Lantana Bandana® – All Series**
- **Osteospermum Tradewinds®**
- **Pentas – All Series**
- **Poinsettia – All Series**
- **Scaevola Bombay®**
- **Vinca Nirvana® Cascade**



	GERANIUMS	DIPLADENIA	SPRING ANNUALS
Callused Specs	100 CC/Bag 4% Overpack	100 CC/Bag 4% Overpack	100 CC/Bag 5% Overpack
Available Weeks	All Year	All Year – some weeks limited	All Year – some weeks limited
Minimum Order	600 CC	800 CC	2,000 CC
Minimum Per Variety	100 CC	800 CC	100 CC
Variety Multiples	100 CC	800 CC	100 CC
Multiples Per Order	600 CC	1,600 CC	2,000 CC
Pack Per Box	600	800	4,000/2,000 half-box



# ANGELONIA

## Carita™

ANGELONIA ANGUSTIFOLIA



- **COLOR THAT THRILLS AND BEATS THE HEAT**
- The perfect choice for big and bold color that thrives through the heat of the summer
- Big blooms and upright habits make Carita the perfect thriller for summer combos
- Carita's love of heat and tolerance to drought makes it an ideal choice for warm season landscape plantings



Carita™ Purple  
70003174



Carita™ Raspberry  
70003177



Carita™ White  
70003175

### Specifications

Height	14–18"
Width	12–16"
Vigor	M
Habit	Upright
USDA Zone	9–11
AHS Heat Zone	10–5
Forms Available	URC

### Recommended Containers

SIZE	PPP	FINISH TIME
1 qt	1	8–9 weeks
2.5 qt	1	9–10 weeks
3 qt	1–2	10–12 weeks
1.5 gal	3–5	10–12 weeks
2.5 gal	3–5	10–12 weeks

## Carita™ Cascade

ANGELONIA ANGUSTIFOLIA



- **A CASCADE OF HEAT LOVING COLOR**
- The ultimate summer basket filler and spiller
- A magnet for pollinators with bright and bold colors
- Perfect for baskets and bold mixed combinations



Carita™ Cascade Deep Purple  
70003172



Carita™ Cascade Raspberry  
70018119



Carita™ Cascade White  
70003173

### Specifications

Height	8–10"
Width	18–24"
Vigor	M
Habit	Spreading
USDA Zone	9–11
AHS Heat Zone	10–5
Forms Available	URC

### Recommended Containers

SIZE	PPP	FINISH TIME
1.5 gal HB	4–5	10–12 weeks
2 gal HB	4–5	10–12 weeks

# ARGYRANTHEMUM

## Sassy®

ARGYRANTHEMUM FRUTESCENS



- **BRIGHT, BOLD AND PERFECT FOR COOL SEASON SALES**
- Strong habits paired with cheerful daisy blooms are a consumer favorite
- Controlled, well branched habits are ideal for both small and large containers
- Pair with other cool season annuals like Osteospermum and Diascia for perfect early season assortment



Sassy® Double Deep Rose  
70036131



Sassy® Double Yellow  
70051319



Sassy® Red  
70006552



Sassy® Rose  
70003326



Sassy® White  
70066240

### Specifications

Height	10–14"
Width	12–14"
Vigor	M
Habit	Upright
USDA Zone	9–11
AHS Heat Zone	12–1
Forms Available	URC

### Recommended Containers

SIZE	PPP	FINISH TIME
1 qt	1	6–7 weeks
2.5 qt	1	8–9 weeks
3 qt	1–2	9–10 weeks

# ASTERISCUS

## Aurelia™

ASTERISCUS MARITIMUS



- **THE PERFECT POP OF COLOR FOR THE EARLY SEASON**
- Bright and bold canary-yellow blooms add a pop of color for early season sales
- Compact and controlled habits make Aurelia ideal for small containers such as 1 qt. and 2.5 qt
- Durable color holds up to cool and drought making it ideal for retail shelf life and end consumer success



Aurelia™ Yellow  
70036102

### Specifications

Height	6–8"
Width	10–12"
Vigor	M
Habit	Upright
USDA Zone	9–10
AHS Heat Zone	6–1
Forms Available	URC

### Recommended Containers

SIZE	PPP	FINISH TIME
1 qt	1	6–7 weeks
2.5 qt	1	8–9 weeks
3 qt	1–2	9–10 weeks

# BACOPA

## Calypso™

SUTERA CORDATA



- **THE BIGGEST BACOPA BLOOMS FOR THE COOL SEASON**
- Calypso's big blooms and trailing habit is the perfect mixer for early season baskets and combos
- Calypso excels when temps are cool ensuring early season success



Calypso™ Jumbo Deep Lavender  
70060753



Calypso™ Jumbo Pink Eye  
70060755



Calypso™ Jumbo White Imp.  
70060751

### Specifications

Height	4–6"
Width	14–16"
Vigor	M
Habit	Trailing
USDA Zone	9–11
AHS Heat Zone	9–1
Forms Available	URC

### Recommended Containers

SIZE	PPP	FINISH TIME
2.5 qt	1–2	8–9 weeks
2 gal HB	3–4	10–12 weeks

# BIDENS

## Mexican Gold™

BIDENS FERULIFOLIA



- **MAKES COMBOS SHINE**
- Bright yellow blooms are perfect in mixes and is the ideal pairing with Petunias and Verbenas
- Strong habits and continuous flowering ensure Mexican Gold blooms early and continues through the heat of the summer



Mexican Gold™  
70018300



Mexican Gold™ Compact  
70003254



Mexican Gold™ Semi-Double  
70018302

### Specifications

Height	8–10"
Width	10–12"
Vigor	C–M
Habit	Semi-Trailing
USDA Zone	9–11
AHS Heat Zone	11–1
Forms Available	URC

### Recommended Containers

SIZE	PPP	FINISH TIME
2.5 qt	1	10–11 weeks
3 qt	1–2	10–11 weeks



# CALIBRACHOA

## Callie®

CALIBRACHOA HYBRIDA



- **COLOR UNCOMPROMISED**
- Big vigor, bold colors and continuous blooms from spring to fall
- The perfect mixer and the primary foundation for best-selling Kwik Kombos™
- An excellent choice for premium hanging baskets and mixed combinations

### Specifications

Height	4–8"
Width	12–16"
Vigor	V
Habit	Trailing
USDA Zone	9–11
AHS Heat Zone	12–1
Forms Available	URC

### Recommended Containers

SIZE	PPP	FINISH TIME
1 qt	1	8–10 weeks
2.5 qt	1	9–11 weeks
3 qt	1–2	9–10 weeks
1.5 gal HB	3–5	9–11 weeks
2 gal HB	3–5	9–11 weeks



Callie® Apricot  
70035958



Callie® Burgundy  
70035959



Callie® Coral Pink  
70003284



Callie® Dark Blue  
70051254



Callie® Dark Red  
70068741



Callie® Gold with Red Eye  
70003287



Callie® Light Blue  
70008012



Callie® Mango  
70003301

# CALIBRACHOA



Callie® Orange  
70003288



Callie® Orange Sunrise Imp.  
70018467



Callie® Peach  
70003290



Callie® Pink Morn  
70054735



Callie® Pink with Eye  
70018435



Callie® Purple Imp.  
70051253



Callie® Rose  
70007858



Callie® Scarlet  
70003292



Callie® Star Pink  
70018437



Callie® White Imp.  
70052153



Callie® White with Rose Vein  
70003293



Callie® Yellow Imp.  
70035954

# CALENDULA

## Caleo™

CALENDULA HYBRIDA



Caleo™ Orange  
70054975



Caleo™ Yellow  
70060726

- **KICK-START YOUR SPRING WITH CALEO**
- Perfect for early season left shoulder sales
- Extremely durable color that flowers during cold weather and continues through the heat of summer
- Excellent resistance to powdery mildew

### Specifications

Height	8–10"
Width	12–14"
Vigor	M
Habit	Mounded
USDA Zone	8–10
AHS Heat Zone	6–1
Forms Available	URC

### Recommended Containers

SIZE	PPP	FINISH TIME
1 qt	1	6–7 weeks
2.5 qt	1	8–9 weeks
3 qt	1–2	9–10 weeks
1.5 gal HB	4–5	10–12 weeks
2.5 gal	4–5	10–12 weeks

# CUPHEA

## Cuphoric™

CUPHEA RAMOSISSIMA



Cuphoric™ Pink  
70008301

- **CLOUDS OF HEAT LOVING COLOR**
- Exceptional drought and heat tolerance
- Excels in both small and large pots
- Unique filler for out of the box combinations

### Specifications

<b>Height</b>	6–12"
<b>Width</b>	10–14"
<b>Vigor</b>	M
<b>Habit</b>	Mounded
<b>USDA Zone</b>	9–11
<b>AHS Heat Zone</b>	12–1
<b>Forms Available</b>	URC

### Recommended Containers

SIZE	PPP	FINISH TIME
1 qt	1	5–7 weeks
2.5 qt	1	6–8 weeks
3 qt	2	7–9 weeks

## Goldalia™

DAHLIA HYBRIDA



Goldalia™ Rose  
70035934



Goldalia™ Scarlet  
70035935

- **SEMI-DOUBLE STUNNERS**
- Unique semi-double flowers add a unique twist to a garden classic
- Compact habits are ideal for space efficient production
- Pair with Midalio™ for the ultimate compact dahlia program

### Specifications

<b>Height</b>	8–10"
<b>Width</b>	8–10"
<b>Vigor</b>	C
<b>Habit</b>	Upright
<b>USDA Zone</b>	9–10
<b>AHS Heat Zone</b>	12–1
<b>Forms Available</b>	URC

### Recommended Containers

SIZE	PPP	FINISH TIME
1 qt	1	5–7 weeks
2.5 qt	1	6–8 weeks
3 qt	1–2	8–10 weeks

## Grandalia™

DAHLIA HYBRIDA



- **COLOR ON THE GRANDEST SCALE**
- Bold and bright double blooms are perfect for retail wow
- Highly uniform habits make production a breeze
- Medium vigor habits are ideal for 2.5 qt. and larger containers

### Specifications

Height	14–16"
Width	18–22"
Vigor	M
Habit	Upright
USDA Zone	9–10
AHS Heat Zone	12–1
Forms Available	URC

### Recommended Containers

SIZE	PPP	FINISH TIME
1.25 qt	1	5–7 weeks
2.5 qt	1	6–8 weeks
3 qt	1–2	8–10 weeks



Grandalia™ Dark Pink  
70065088



Grandalia™ Dark Red  
70052845



Grandalia™ Magenta  
70019194



Grandalia™ Orange  
70019193



Grandalia™ Pink  
70019196



Grandalia™ Red  
70051544



Grandalia™ Rose  
70052842



Grandalia™ Sunny Flame  
70059454



Grandalia™ Sunrise  
70035980



Grandalia™ White  
70035975



Grandalia™ Yellow  
70019190

## Midalio™

DAHLIA HYBRIDA



- **BEAUTIFULLY EFFICIENT**
- The perfect choice for volume-focused programs
- Ultra-uniform habits and first flower in the center of the pot make Midalio the most grower friendly and efficient Dahlia available
- Compact and controlled vigor make Midalio ideal for small container programs where space efficiency and bench run uniformity are a must



### Specifications

Height	10–12"
Width	14–18"
Vigor	C
Habit	Upright
USDA Zone	9–10
AHS Heat Zone	12–1
Forms Available	URC

### Recommended Containers

SIZE	PPP	FINISH TIME
1 qt	1	5–7 weeks
2.5 qt	1	6–8 weeks
3 qt	1–2	8–10 weeks



Midalio™ Dark Red  
70052836



Midalio™ Orange  
70065102



Midalio™ Pink  
70019184



Midalio™ Scarlet  
70052838



Midalio™ White  
70019176



Midalio™ Yellow  
70019178

# DIASCIA

## Darla®

DIASCIA BARBERAE



- **COOL SEASON CLOUDS OF COLOR**
- Endless blooms for the coolest part of the year
- Uniform and well matched habits ensure ease of production
- The ideal choice for premium cool season containers and baskets

### Specifications

Height	12–14"
Width	12–14"
Vigor	M
Habit	Mounded
USDA Zone	9–10
AHS Heat Zone	4–1
Forms Available	URC

### Recommended Containers

SIZE	PPP	FINISH TIME
2.5 qt	1–2	7–9 weeks
3 qt	2–3	9–11 weeks
1.5 gal HB	4–5	9–11 weeks



Darla® Appleblossom  
70003543



Darla® Deep Salmon  
70006747



Darla® Light Pink  
70003545



Darla® Orange  
70019354



Darla® Red  
70019355



Darla® Rose  
70003547



Darla® White  
70006746



VEGETATIVE | ANNUALS

# DIPLADENIA

*Madinia*<sup>TM</sup>

MANDEVILLA HYBRIDA



- **RED HOT COLOR THAT WOWS**
- Limited vining allows growers to produce both small and large pots with less labor, ensuring more plants per square foot and less time pinching and spacing
- Class leading disease resistance ensures limited leaf drop and superior sell through at retail
- The most established and reliable unrooted program offering both URC and CC options in a full color range



### Specifications

Height	12-14"
Width	12-14"
Vigor	M
Habit	Mounded
USDA Zone	9-11
AHS Heat Zone	12-1
Forms Available	URC, CC

### Recommended Containers

SIZE	PPP	FINISH TIME
1 qt	1	8-10 weeks
2.5 qt	1	11-13 weeks
1.5 gal	4-5	13-15 weeks
2.5 gal	4-5	13-15 weeks

VEGETATIVE | ANNUALS

# DIPLADENIA



Madinia™ Deep Red  
70003886



Madinia™ Hot Pink  
70003887



Madinia™ Pink  
70003888



Madinia™ White  
70003889

## Mezoo™

DOROTHEANTHUS BELLIDIFORMIS



Mezoo™ Trailing Red  
70003864

# DOROTHEANTHUS

- **THE PERFECT SUMMER MIXER**
- The ultimate heat lover for mixed combinations
- Bold variegated foliage adds color and texture to summer programs
- Thrives in a wide range of conditions including cold, heat, and drought

### Specifications

Height	6–8"
Width	18–20"
Vigor	V
Habit	Trailing
USDA Zone	9–10
AHS Heat Zone	9–1
Forms Available	URC

### Recommended Containers

SIZE	PPP	FINISH TIME
2.5 qt	1	7–8 weeks
3 qt	1–2	9–10 weeks
1.5 gal HB	4–5	10–12 weeks
2 gal HB	4–5	10–12 weeks



# EUPHORBIA

## Euphoric™

EUPHORBIA HYPERICIFOLIA



Euphoric™ White  
70019405

- **THE ULTIMATE COMBO FILLER**
- Small white flowers are produced in mass making Euphoric ideal for mixed combinations
- Strong vigor fills fast and matches well with other annuals
- Loves the heat and thrives all summer long

### Specifications

Height	14–20"
Width	14–20"
Vigor	M
Habit	Mounded
USDA Zone	9–10
AHS Heat Zone	10–1
Forms Available	URC

### Recommended Containers

SIZE	PPP	FINISH TIME
1 qt	1	5–7 weeks
2.5 qt	1	6–8 weeks
3 qt	1–2	8–9 weeks
1.5 gal HB	4–5	10–11 weeks

# GAILLARDIA

## Sunrita®

GAILLARDIA ARISTATA



- **TOUGH AS NAILS COLOR FROM SPRING TO FALL**
- Big and brightly colored blooms ensure the ultimate show of color
- Heat loving and drought tolerant make Sunrita a great choice for durable season long color
- Controlled habits are ideal for 2.5 qt. containers



Sunrita® Burgundy Imp.  
70060851



Sunrita® Golden Yellow  
70051444



Sunrita® Peach  
70019484



Sunrita® Red Yellow Tip Imp.  
70019471



Sunrita® Yellow Red Ring  
70035483

### Specifications

Height	14–16"
Width	14–18"
Vigor	M
Habit	Mounded
USDA Zone	4–9
AHS Heat Zone	8–1
Forms Available	URC, CC

### Recommended Containers

SIZE	PPP	FINISH TIME
1 qt	1	7–8 weeks
2.5 qt	1	9–11 weeks

# GERANIUM — INTERSPECIFIC

## Caliente®

PELARGONIUM INTERSPECIFIC



- Best in class landscape performer with continuous color through the most extreme summer heat and drought
- Semi mounding habit is great for landscape fill or use in hanging baskets
- Exceptional edema tolerance

### Specifications

Height	10–12"
Width	20–26"
Vigor	M–V
Habit	Mounded
USDA Zone	9–11
AHS Heat Zone	12–1
Forms Available	URC, CC

### Recommended Containers

SIZE	PPP	FINISH TIME
1 qt	1	7–8 weeks
1.25 qt	1	7–8 weeks
2.5 qt	1	9–10 weeks
1.5 gal HB	3–4	10–12 weeks
2 gal HB	4–5	10–12 weeks



Caliente® Coral Salmon  
70028724



Caliente® Deep Red  
70004105



Caliente® Fire  
70020283



Caliente® Hot Coral  
70008715



Caliente® Lavender Imp.  
70051129



Caliente® Magenta  
70066644



Caliente® Orange  
70008714



Caliente® Pink  
70008713



Caliente® Rose  
70004106



Caliente® White  
70059611

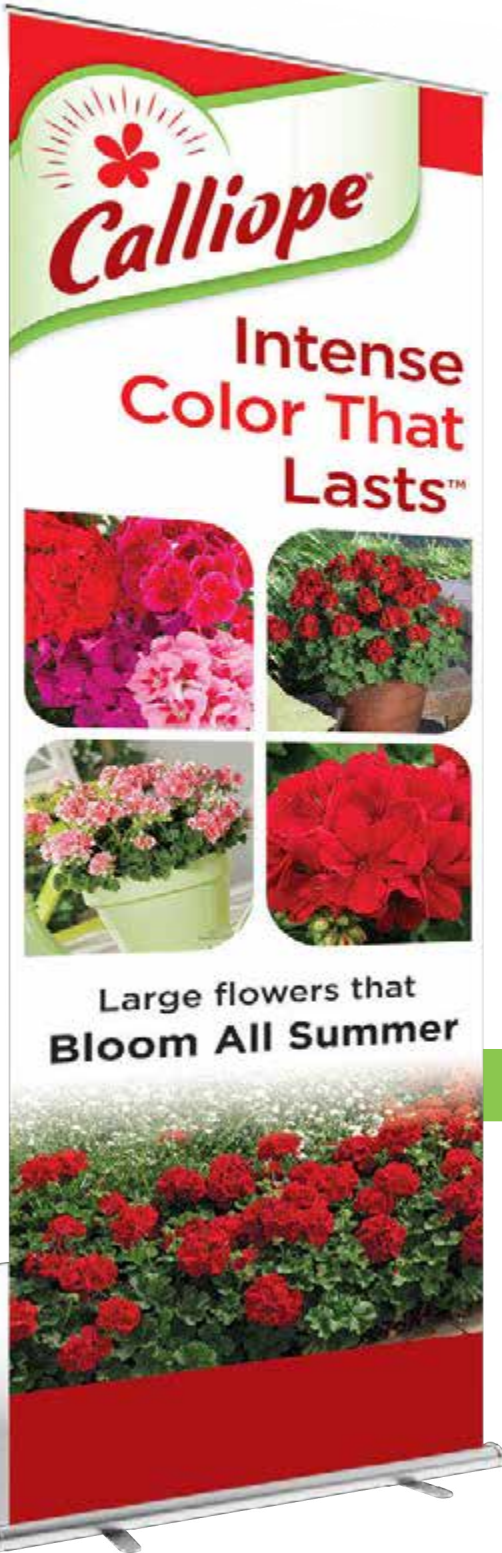
VEGETATIVE | ANNUALS



INTENSE COLOR THAT LASTS™

# POP

## PACKAGING



BANNER



POT WRAP

STAKE TAG



PREMIUM HANG TAG

RETAIL SIGNAGE





## Intense Color That Lasts™

From the innovators of interspecific geraniums, Calliope® is known for its intense color that lasts and continues to be praised for its best-in-class garden performance. Calliope is available in a range of sizes to meet all of your retail program needs.

Calliope Medium will bring pizzazz to combinations, and its versatile size dominates the market for medium-sized container programs.

Calliope Large, with its large blooms and vigor, is a behemoth of color and is the industry's go-to geranium for outstanding garden appeal.

Calliope geraniums represent a revolutionary breeding breakthrough. By combining the best features of both ivy and zonal geraniums, Calliope offers features and performance you won't find anywhere else.

With its exceptional branching habit, outstanding edema tolerance, and superior vigor for both landscapes and container plantings, you can count on Calliope to deliver continuous, season-long flowering in an array of uniquely intense colors.

Calliope is a heat-loving and drought-tolerant geranium with reliable performance in the hottest and driest summer conditions. Calliope features large flower heads full of intense color and blooms under full-sun and partial shade conditions. Its superior branching fills containers quickly, providing a premium-looking finished product that sells itself.

### Recommended Container Sizes

SIZE CLASS	GARDEN VIGOR	1 PT	1 QT	1.25 QT	2.5 QT	3 QT	1.5 G	2 G	2.5 G
Calliope® Large	20–24" Spread								
Calliope® Medium	14–16" Spread								

# CALLIOPE® LARGE



**Available in:**

- Burgundy
- Dark Red
- Magenta
- Pink
- Salmon
- Scarlet Fire

# CALLIOPE® MEDIUM

**Available in:**

- Burgundy
- Crimson Flame
- Dark Red
- Deep Rose
- Hot Pink
- Lavender Rose
- Pink Flame
- Red
- Scarlet
- Violet
- White



# GERANIUM — INTERSPECIFIC



PELARGONIUM INTERSPECIFIC



- **INTENSE COLOR THAT LASTS™**
- The original interspecific geranium known for its intense color
- Proven, award winning performance makes this a reliable choice for all your premium geranium programs
- Excellent performance in the landscape and thrives under heat and drought conditions



VEGETATIVE | ANNUALS

### Specifications

<b>Height</b>	14–16"
<b>Width</b>	20–24"
<b>Vigor</b>	V
<b>Habit</b>	Mounded
<b>USDA Zone</b>	9–11
<b>AHS Heat Zone</b>	12–1
<b>Forms Available</b>	URC, CC

### Recommended Containers

SIZE	PPP	FINISH TIME
<b>2.5 qt</b>	1	8–9 weeks
<b>3 qt</b>	1	9–10 weeks
<b>1.5 gal HB</b>	3–4	10–12 weeks
<b>2 gal HB</b>	3–4	12–13 weeks

# GERANIUM — INTERSPECIFIC



Calliope® Large Burgundy  
70020360



Calliope® Large Dark Red  
70004166



Calliope® Large Magenta  
70059912



Calliope® Large Pink  
70040840



Calliope® Large Salmon  
70054695



Calliope® Large Scarlet Fire  
70007852



VEGETATIVE | ANNUALS



# GERANIUM — INTERSPECIFIC



- **INTENSE COLOR THAT LASTS™**
- Controlled habit with superior performance over traditional zonal geraniums
- Now a Calliope to meet your high volume production needs for quarts and gallons
- Large semi-double flowers with intense color for retail and consumer appeal
- Great landscape performance

PELARGONIUM INTERSPECIFIC



VEGETATIVE | ANNUALS

## Specifications

<b>Height</b>	16–20"
<b>Width</b>	14–16"
<b>Vigor</b>	M
<b>Habit</b>	Mounded
<b>USDA Zone</b>	9–11
<b>AHS Heat Zone</b>	12–1
<b>Forms Available</b>	URC, CC

## Recommended Containers

SIZE	PPP	FINISH TIME
1 qt	1	6–7 weeks
1.25 qt	1	6–7 weeks
2.5 qt	1	8–9 weeks
3 qt	1–2	10–12 weeks
1.5 gal HB	3–4	10–12 weeks
2 gal HB	4–5	10–12 weeks

# GERANIUM — INTERSPECIFIC



Calliope® Medium Burgundy  
70066631



Calliope® Medium Crimson Flame  
70048339



Calliope® Medium Dark Red  
70059883



Calliope® Medium Deep Rose  
70059896



Calliope® Medium Hot Pink  
70020318



Calliope® Medium Lavender Rose  
70020537



Calliope® Medium Pink Flame  
70054721



Calliope® Medium Red  
70059612



Calliope® Medium Scarlet  
70051139



Calliope® Medium Violet  
70066648



Calliope® Medium White  
70059858

VEGETATIVE | ANNUALS

# GERANIUM — IVY

## Blizzard®

PELARGONIUM PELTATUM



- A top ivy choice for hot and humid climates
- Unmatched color performance all summer long with strong plant vigor and unbeatable branching
- The single flowered Blizzard series displays an outstanding amount of color



Blizzard® Blue  
70004099



Blizzard® Dark Red  
70004100



Blizzard® Pink  
70020624



Blizzard® Red  
70008013



Blizzard® White  
70004103

### Specifications

Height	12–14"
Width	20–24"
Vigor	V
Habit	Trailing
USDA Zone	9–11
AHS Heat Zone	10–1
Forms Available	URC, CC

### Recommended Containers

SIZE	PPP	FINISH TIME
1 qt	1	10–11 weeks
1.25 qt	1	10–11 weeks
2.5 qt	3	9–11 weeks
1.5 gal HB	3	13–14 weeks
2 gal HB	3	13–14 weeks

## Cascade

PELARGONIUM PELTATUM



- Cascade is a traditional ivy geranium featuring a waterfall of color that works in baskets and window boxes
- The plants have a vigorous growing habit which require minimal maintenance
- Extreme heat and edema tolerance for success all season long



Cascade Acapulco Compact  
70004124



Cascade Bright  
70004171



Cascade Lila-Compact  
70004173



Cascade Sofie  
70004176



Cascade White  
70004202

### Specifications

Height	12–14"
Width	20–24"
Vigor	V
Habit	Trailing
USDA Zone	3–11
AHS Heat Zone	10–1
Forms Available	URC, CC

### Recommended Containers

SIZE	PPP	FINISH TIME
1 qt	1	10–11 weeks
1.25 qt	1	10–11 weeks
1.5 gal HB	3	13–14 weeks
2 gal HB	3	13–14 weeks

# GERANIUM — IVY

## Contessa™

PELARGONIUM PELTATUM



- A double-flowered ivy offering dependable greenhouse production and proven outdoor garden performance
- Contessa produces maximum flower power with a wide range of colors
- Great addition to your production of hanging baskets, mixed containers, and window boxes



Contessa™ Burgundy  
70004184



Contessa™ Burgundy Bicolor  
70004181



Contessa™ Dark Red  
70065952



Contessa™ Double Lilac  
70004190



Contessa™ Hot Pink  
70065947



Contessa™ Lavender  
70004178



Contessa™ Pink  
70004187



Contessa™ Purple  
70004180



Contessa™ Red  
70004179

### Specifications

Height	10–12"
Width	16–20"
Vigor	M
Habit	Trailing
USDA Zone	9–11
AHS Heat Zone	10–1
Forms Available	URC, CC

### Recommended Containers

SIZE	PPP	FINISH TIME
1 qt	1	10–11 weeks
1.25 qt	1	10–11 weeks
1.5 gal HB	3	13–14 weeks
2 gal HB	3	13–14 weeks



Contessa™ White  
70004185

# GERANIUM — IVY

## Freestyle®

PELARGONIUM PELTATUM



Freestyle® Arctic Red  
70004182



Freestyle® Cherry Rose  
70020486



Freestyle® Orchid  
70004201

- A semi-trailing series with large double-flowered blooms
- Excellent edema and heat tolerance even under stressful summer conditions
- This easy to produce series is ideal for hanging baskets and combinations with the added benefit of a longer retail shelf life

### Specifications

Height	10–12"
Width	16–20"
Vigor	M
Habit	Semi-Trailing
USDA Zone	9–11
AHS Heat Zone	10–1
Forms Available	URC, CC

### Recommended Containers

SIZE	PPP	FINISH TIME
1 qt	1	10–11 weeks
1.25 qt	1	10–11 weeks
1.5 gal HB	3	13–14 weeks
2 gal HB	3	13–14 weeks
3 gal HB	4	13–14 weeks

## Temprano™

PELARGONIUM PELTATUM



Temprano™ Bright Red  
70004195



Temprano™ Dark Red  
70008001



Temprano™ Hot Coral  
70053309



Temprano™ Lavender  
70004193

- Our earliest-to-bloom ivy series for a faster greenhouse finish
- These compact varieties work well for high density production and more profitable greenhouse turns
- Continuous flowering all season and has large double flower forms
- A great addition to mixed containers and window boxes

### Specifications

Height	10–12"
Width	16–20"
Vigor	M
Habit	Trailing
USDA Zone	9–11
AHS Heat Zone	10–1
Forms Available	URC, CC

### Recommended Containers

SIZE	PPP	FINISH TIME
1 qt	1	10–11 weeks
1.25 qt	1	10–11 weeks
1.5 gal HB	3	13–14 weeks
2 gal HB	3	13–14 weeks



Temprano™ Orange  
70004197



Temprano™ Pink  
70008002



Temprano™ Salmon Imp.  
70028703



Temprano™ White Imp.  
70065950

# GERANIUM — ZONAL

## Classic™

PELARGONIUM ZONALE



- A full color zonal series with medium vigor offers growers the flexibility to produce top quality plants in 1 qt. to larger containers and hanging baskets

### Specifications

<b>Height</b>	14–16"
<b>Width</b>	14–16"
<b>Vigor</b>	M
<b>Habit</b>	Mounded
<b>USDA Zone</b>	9–11
<b>AHS Heat Zone</b>	10–1
<b>Forms Available</b>	URC, CC

### Recommended Containers

SIZE	PPP	FINISH TIME
1 qt	1	7–8 weeks
1.25 qt	1	8–9 weeks
2.5 qt	1	11–12 weeks
3 qt	2	14–15 weeks
1.5 gal HB	4	11–12 weeks
2 gal HB	5	13–14 weeks



Classic™ Dark Salmon  
70004135



Classic™ Hot Pink  
70028742



Classic™ Lavender Flame Imp.  
70020550



Classic™ Light Salmon  
70004133



Classic™ Mosaic Purple  
70004097



Classic™ Mosaic Red  
70004098



Classic™ Pink  
70004130



Classic™ Pink Blush  
70004128



Classic™ Red  
70004132



Classic™ Salmon  
70004162



Classic™ Scarlet  
70006938



Classic™ White  
70004136

## Fidelity®

PELARGONIUM ZONALE



Fidelity® Dark Red  
70004142

- A naturally compact zonal for high density production and better use of greenhouse space
- Vivid colors on plants producing multiple blooms for faster sell through
- Little to no growth regulator required

### Specifications

<b>Height</b>	10–12"
<b>Width</b>	10–12"
<b>Vigor</b>	C–M
<b>Habit</b>	Mounded
<b>USDA Zone</b>	9–11
<b>AHS Heat Zone</b>	10–1
<b>Forms Available</b>	URC, CC

### Recommended Containers

SIZE	PPP	FINISH TIME
1 pt	1	7–8 weeks
1 qt	1	7–8 weeks
1.25 qt	1	8–9 weeks
2.5 qt	1	11–12 weeks
1.5 gal HB	5	11–12 weeks

# GERANIUM – ZONAL

## Americana®

PELARGONIUM ZONALE



- A very versatile zonal series bred especially for the North American market conditions
- Americana is a great series for fast sales of the bench with its large and vibrant flowers with multiple booms open at the first flush
- Proven outdoor performance with the versatility to work in quart pots up to larger containers



### Specifications

Height	14–16"
Width	14–16"
Vigor	M
Habit	Mounded
USDA Zone	9–11
AHS Heat Zone	10–1
Forms Available	URC, CC

### Recommended Containers

SIZE	PPP	FINISH TIME
1 qt	1	7–8 weeks
1.25 qt	1	8–9 weeks
2.5 qt	1	11–12 weeks
3 qt	3	14–15 weeks
1.5 gal HB	4	11–12 weeks
2 gal HB	5	13–14 weeks



Americana® Bright Red  
70020478



Americana® Cherry Rose  
70020479



Americana® Coral  
70020480



Americana® Dark Red  
70020527



Americana® Light Pink Splash  
70004127



Americana® Orchid  
70020482



Americana® Pink  
70004093



Americana® Red  
70007854

# GERANIUM — ZONAL



Americana® Rose Mega Splash  
70004155



Americana® Salmon  
70020528



Americana® Violet  
70006929



Americana® White  
70020529



Americana® White Splash  
70020558

## Rocky Mountain™

PELARGONIUM ZONALE



Rocky Mountain™ Dark Red  
70006932



Rocky Mountain™ Deep Rose  
70020534



Rocky Mountain™ Lavender  
70020490



Rocky Mountain™ Light Pink  
70020491



Rocky Mountain™ Magenta  
70020492



Rocky Mountain™ Orange  
70004111



Rocky Mountain™ Pink  
70006941



Rocky Mountain™ Red  
70004112



Rocky Mountain™ Royal Red  
70006934



Rocky Mountain™ Salmon  
70004113



Rocky Mountain™ Violet  
70006935



Rocky Mountain™ White  
70004115

- Strong, vigorous plants for large container and landscape plantings
- Bred to thrive in North American climates
- Large round flowers give provides for high impact retail sales

### Specifications

Height	14–16"
Width	14–16"
Vigor	V
Habit	Mounded
USDA Zone	9–11
AHS Heat Zone	10–1
Forms Available	URC, CC

### Recommended Containers

SIZE	PPP	FINISH TIME
1.25 qt	1	8–9 weeks
2.5 qt	1	11–12 weeks
3 qt	2	13–14 weeks
1.5 gal HB	4	11–12 weeks
2 gal HB	5	13–14 weeks



# GERANIUM — ZONAL

## Tango™

PELARGONIUM ZONALE



- Simplify your high-density quart and small pot production with Tango™
- Highly efficient and programmable series for bench run production and more profitable sales
- For quick turns use a CC direct stick



### Specifications

Height	10–12"
Width	10–12"
Vigor	C
Habit	Mounded
USDA Zone	9–11
AHS Heat Zone	10–1
Forms Available	URC, CC

### Recommended Containers

SIZE	PPP	FINISH TIME
Packs	1	7–8 weeks
1 pt	1	7–8 weeks
1 qt	1	7–8 weeks
1.25 qt	1	8–9 weeks
2.5 qt	1	11–12 weeks
1.5 gal HB	5	11–12 weeks



Tango™ Bicolor Cherry  
70065956



Tango™ Dark Red  
70004116



Tango™ Deep Pink  
70020483



Tango™ Deep Red  
70004107



Tango™ Hot Pink  
70004117



Tango™ Lavender  
70004118



Tango™ Light Pink  
70004149



Tango™ Neon Purple  
70004119

# GERANIUM – ZONAL



Tango™ Orange  
70004120



Tango™ Rose Mega Splash  
70020533



Tango™ Rose Splash  
70004108



Tango™ Salmon  
70004150



Tango™ Tango  
70006942



Tango™ Velvet Red  
70007861



Tango™ Violet  
70020484



Tango™ White  
70008003

# HELIOTROPE

## Scentropia™

HELIOTROPIUM ARBORESCENS



Scentropia™ Dark Blue  
70003693

- **SWEET SUMMER COLOR**
- Intensely fragrant heat loving color
- Densely branched and big blooms make for bold containers and combos
- The ultimate attractor for butterflies and hummingbirds

### Specifications

Height	12–16"
Width	10–14"
Vigor	M
Habit	Upright
USDA Zone	9–11
AHS Heat Zone	10–1
Forms Available	URC, CC

### Recommended Containers

SIZE	PPP	FINISH TIME
1 qt	1	5–6 weeks
2.5 qt	1–2	8–9 weeks
3 qt	1–2	8–9 weeks

VEGETATIVE | ANNUALS

## Silhouette®

IMPATIENS WALLERIANA



- **NONSTOP COLOR FOR THE SHADE**
- Continuous flowering with unique double blooms from spring to frost
- Ideal for both shade containers and in-ground plantings
- Available in a broad range of bright and bold colors

### Specifications

<b>Height</b>	10–12"
<b>Width</b>	10–12"
<b>Vigor</b>	M
<b>Habit</b>	Mounded
<b>USDA Zone</b>	9–11
<b>AHS Heat Zone</b>	9–1
<b>Forms Available</b>	URC

### Recommended Containers

SIZE	PPP	FINISH TIME
<b>1 qt</b>	1	6–7 weeks
<b>2.5 qt</b>	1	8–9 weeks
<b>3 qt</b>	1–2	9–10 weeks
<b>1.5 gal HB</b>	3–4	11–12 weeks



Silhouette® Appleblossom  
70003776



Silhouette® Cherry  
70003801



Silhouette® Purple  
70003779



Silhouette® Red  
70003778



Silhouette® Red Star  
70003780



Silhouette® Rose  
70003766



Silhouette® Rose Star  
70003777



Silhouette® Salmon  
70003802



Silhouette® White  
70003803



## Sidekick™

IPOMOEA BATATAS



- **KICK-START SUMMER COMBOS**
- Bright foliage and bold textures are ideal for summer mixed combinations
- Versatile habits work well in both containers and in-ground plantings
- Superior colors hold up even through intense summer heat

### Specifications

Height	12–14"
Width	30–36"
Vigor	M
Habit	Semi-Trailing
USDA Zone	9–11
AHS Heat Zone	12–1
Forms Available	URC

### Recommended Containers

SIZE	PPP	FINISH TIME
1 qt	1	5–6 weeks
2.5 qt	1	7–8 weeks
3 qt	1–2	8–9 weeks
1.5 gal	4–5	10–11 weeks



Sidekick™ Black  
70003179



Sidekick™ Black Heart  
70003178



Sidekick™ Bronze  
70018174



Sidekick™ Lime Imp.  
70028150



LANTANA CAMARA



- **THE BIGGEST BLOOMS AND BRIGHTEST COLORS ALL SUMMER LONG**
- The biggest flowers in the widest range of colors available
- Mounded upright habits ensure constant coverage of color and the best show at retail
- Unparalleled heat and drought tolerance is the perfect choice for summer landscapes



VEGETATIVE | ANNUALS

### Specifications

<b>Height</b>	14–16"
<b>Width</b>	14–16"
<b>Vigor</b>	M
<b>Habit</b>	Mounded
<b>USDA Zone</b>	9–11
<b>AHS Heat Zone</b>	12–1
<b>Forms Available</b>	URC, CC

### Recommended Containers

SIZE	PPP	FINISH TIME
<b>1 qt</b>	1	7–8 weeks
<b>2.5 qt</b>	1	9–10 weeks
<b>3 qt</b>	1–2	10–11 weeks
<b>1.5 gal HB</b>	4–5	11–12 weeks
<b>1.5 gal</b>	4–5	11–12 weeks
<b>2 gal HB</b>	4–5	11–12 weeks
<b>2.5 gal</b>	4–5	11–12 weeks

# LANTANA

VEGETATIVE | ANNUALS



Bandana® Cherry  
70019858



Bandana® Cherry Sunrise  
70003837



Bandana® Lemon Zest  
70007850



Bandana® Orange  
70051046



Bandana® Peach  
70019840



Bandana® Pink  
70019831



Bandana® Red Imp.  
70054196



Bandana® Rose  
70019838



Bandana® White  
70007849



Bandana® Yellow  
70060717

## Landscape Bandana®

LANTANA CAMARA



- **MAXIMUM COLOR, MAXIMUM COVERAGE**
- Spreads up to 3 feet maximizing landscape coverage and color
- Big and bright blooms put on a non-stop show all summer long
- Unparalleled heat and drought tolerance excels in summer landscapes

### Specifications

Height	16–20"
Width	32–36"
Vigor	V
Habit	Spreading
USDA Zone	9–11
AHS Heat Zone	12–1
Forms Available	URC, CC

### Recommended Containers

SIZE	PPP	FINISH TIME
2.5 qt	1	9–10 weeks
3 qt	1–2	9–10 weeks
1.5 gal	4–5	10–11 weeks
2.5 gal	4–5	10–11 weeks



Landscape Bandana® Gold  
70036138



Landscape Bandana® Lemon Zest  
70060721



Landscape Bandana® Pink  
70051062



Landscape Bandana® Red Imp.  
70054204



Landscape Bandana® Yellow  
70036136

# LANTANA

## Bandito™

LANTANA CAMARA



- **SMALL ON SIZE, BIG ON IMPACT**
- Intense colors on a tidy package are perfect for packs and 1 qt. containers
- The perfect pop of color for mixed combinations that won't dominate other components
- Unparalleled heat and drought tolerance excels through the hottest of weather



Bandito™ Lemon Zest  
70054189



Bandito™ Orange Sunrise  
70003838



Bandito™ Red  
70019835



Bandito™ Rose  
70019834

### Specifications

Height	12–14"
Width	12–14"
Vigor	C
Habit	Mounded
USDA Zone	9–11
AHS Heat Zone	12–1
Forms Available	URC, CC

### Recommended Containers

SIZE	PPP	FINISH TIME
Packs	1	4–5 weeks
1 qt	1	7–8 weeks
2.5 qt	1	9–10 weeks

# LYSIMACHIA

## Goldii

LYSIMACHIA NUMMULARIA



- Versatile texture and color
- Novel chartreuse foliage adds texture and bold color to combinations
- Fast growth is great for quick turn accents



Goldii  
70003845

### Specifications

Height	4–6"
Width	10–16"
Vigor	M
Habit	Trailing
USDA Zone	8–10
AHS Heat Zone	12–1
Forms Available	URC

### Recommended Containers

SIZE	PPP	FINISH TIME
1 qt	1	5–6 weeks
2.5 qt	1–2	7–8 weeks
3 qt	2–3	8–9 weeks
1.5 gal HB	4–5	9–11 weeks





LOBELIA ERINUS



- **FILLS FAST AND BEATS THE HEAT**
- The perfect choice for the boldest blues and brightest whites
- Strong densely branched habits are ideal for hanging baskets and mixed combinations
- Bred for superior heat tolerance ensures Techno stays in color all season long



VEGETATIVE | ANNUALS

### Specifications

Height	6–10"
Width	18–22"
Vigor	M
Habit	Spreading
USDA Zone	10–11
AHS Heat Zone	8–1
Forms Available	URC

### Recommended Containers

SIZE	PPP	FINISH TIME
2.5 qt	1	8–10 weeks
3 qt	1–2	8–10 weeks
1.5 gal HB	4–5	10–11 weeks
2 gal HB	4–5	10–11 weeks

# LOBELIA



Techno® Blue  
70003825



Techno® Heat Dark Blue  
70003826



Techno® Heat Electric Blue  
70003827



Techno® Heat Light Blue Imp.  
70053408



Techno® Heat Violet  
70007869



Techno® Heat White  
70007906



VEGETATIVE | ANNUALS

## Techno<sup>®</sup> Heat Upright

LOBELIA ERINUS



- **COOL COLOR IN A SPACE EFFICIENT PACKAGE**
- Upright habits are ideal for high density small pot production
- Day neutral flowering blooms early and ensures you go to market first
- Class leading heat tolerance keeps Techno in flower even when temperatures rise



### Specifications

Height	8–12"
Width	16–20"
Vigor	C
Habit	Upright
USDA Zone	10–11
AHS Heat Zone	8–1
Forms Available	URC

### Recommended Containers

SIZE	PPP	FINISH TIME
1 qt	1	8–10 weeks
2.5 qt	1	10–11 weeks



Techno<sup>®</sup> Heat Upright Blue  
70059431



Techno<sup>®</sup> Heat Upright Dark Blue  
70003830



Techno<sup>®</sup> Heat Upright Delft Blue  
70065206



Techno<sup>®</sup> Heat Upright Light Blue Imp.  
70052754



Techno<sup>®</sup> Heat Upright Purple  
70051508



Techno<sup>®</sup> Heat Upright White  
70052752

# NEW GUINEA IMPATIENS

**Sonic®**

IMPATIENS HAWKERI



- Reliable and highly efficient series for pot-tight production
- A full color range of larger flowers on a compact plant that fills pots quickly and has strong retail appeal
- Well branched plants are ideal for small containers and hanging baskets



## Specifications

Height	12–14"
Width	12–14"
Vigor	C–M
Habit	Mounded
USDA Zone	10–11
AHS Heat Zone	9–1
Forms Available	URC

## Recommended Containers

SIZE	PPP	FINISH TIME
1 qt	1	8–10 weeks
1.25 qt	1	8–10 weeks
2.5 qt	1–2	10–12 weeks
1.5 gal HB	4–5	12–14 weeks



Sonic® Amethyst  
70003738



Sonic® Bright Pink  
70019677



Sonic® Deep Purple Imp.  
70066412



Sonic® Deep Red  
70003800



Sonic® Light Lavender  
70003739



Sonic® Light Pink  
70003740



Sonic® Lilac  
70003741



Sonic® Magic Pink  
70003785

VEGETATIVE | ANNUALS

# NEW GUINEA IMPATIENS



Sonic® Mango  
70003792



Sonic® Orange  
70003742



Sonic® Pink  
70003743



Sonic® Red  
70008405



Sonic® Salmon  
70003744



Sonic® Scarlet  
70003804



Sonic® Sweet Cherry  
70003745



Sonic® Sweet Orange  
70003805



Sonic® Sweet Purple  
70003806



Sonic® Sweet Red  
70061277



Sonic® White Imp.  
70066410



# NEW GUINEA IMPATIENS

## Super Sonic®

IMPATIENS HAWKERI



- Ideal for larger premium container production
- Excellent branching producing large flowers, even under high heat
- Flower size up to 3-inches across



### Specifications

Height	14–16"
Width	14–16"
Vigor	V
Habit	Mounded
USDA Zone	10–11
AHS Heat Zone	9–1
Forms Available	URC

### Recommended Containers

SIZE	PPP	FINISH TIME
2.5 qt	1	10–12 weeks
3 qt	2	11–13 weeks
1.5 gal HB	3	12–14 weeks
1.5 gal	3	12–14 weeks
2 gal HB	5	12–14 weeks



Super Sonic® Dark Red  
70066415



Super Sonic® Dark Salmon  
70003793



Super Sonic® Deep Salmon  
70066414



Super Sonic® Deep Scarlet  
70066416



Super Sonic® Flame  
70003747



Super Sonic® Hot Pink  
70003748



Super Sonic® Lavender  
70003749



Super Sonic® Lilac  
70003750

# NEW GUINEA IMPATIENS



Super Sonic® Magenta  
70019687



Super Sonic® Orange Ice  
70019711



Super Sonic® Pastel Pink  
70003751



Super Sonic® Pink  
70019680



Super Sonic® Purple  
70008383



Super Sonic® Red  
70003752



Super Sonic® Sweet Cherry  
70003753



Super Sonic® White  
70003754

## PENSTEMON

### Phoenix™

PENSTEMON HARTWEGII



- TOWERS OF FLOWERS ALL SUMMER LONG
- Vibrant tough as nails color that thrives through the heat of summer
- Tubular flowers are a magnet for pollinators
- The ideal thriller for upscale mixed combination plantings



Phoenix™ Appleblossom  
70004264



Phoenix™ Lavender  
70004265



Phoenix™ Magenta  
70020658



Phoenix™ Pink  
70004267



Phoenix™ Red Imp.  
70020655



Phoenix™ Violet  
70004268

#### Specifications

Height	16–22"
Width	12–14"
Vigor	M
Habit	Upright
USDA Zone	8–10
AHS Heat Zone	9–1
Forms Available	URC

#### Recommended Containers

SIZE	PPP	FINISH TIME
1 qt	1	7–8 weeks
2.5 qt	1–2	11–12 weeks

# OSTEOSPERMUM

## Tradewinds®

OSTEOSPERMUM ECKLONIS



- THE TOUGHEST COLOR FOR THE EARLIEST OF SALES
- Bright and bold daisy like flowers are ideal for early shoulder impulse sales
- Controlled upright habits work well in small and medium sized containers
- Tradewinds flowers without vernalization ensuring consistent success

### Specifications

Height	10–14"
Width	10–14"
Vigor	M
Habit	Upright
USDA Zone	9–11
AHS Heat Zone	6–1
Forms Available	URC, CC

### Recommended Containers

SIZE	PPP	FINISH TIME
1 qt	1	10–13 weeks
2.5 qt	1	11–14 weeks
3 qt	1–2	12–14 weeks



Tradewinds® Bronze  
70020015



Tradewinds® Cinnamon  
70020014



Tradewinds® Deep Purple  
70003906



Tradewinds® Light Purple  
70008085



Tradewinds® Terracotta Imp.  
70055272



Tradewinds® Trailing Deep Purple  
70003909



Tradewinds® Trailing White  
70019994



Tradewinds® White Imp.  
70020017



Tradewinds® Yellow Imp.  
70061545



## Falling Star™

PENTAS LANCEOLATA



- THE FIRST AND ONLY TRAILING PENTAS
- Breakthrough trailing habit makes a classic heat lover now available for baskets
- Not only survives but thrives through the hottest months of year
- The perfect mixer for upscale summer mixed combinations and baskets

### Specifications

Height	8–10"
Width	24–26"
Vigor	M
Habit	Trailing
USDA Zone	9–11
AHS Heat Zone	12–1
Forms Available	URC, CC

### Recommended Containers

SIZE	PPP	FINISH TIME
1.5 gal HB	3–4	12–14 weeks
2.5 gal	3–4	12–14 weeks



Falling Star™ Hot Pink  
70054740



Falling Star™ Pink Bicolor  
70051358



Falling Star™ Red  
70064381



Falling Star™ Rose  
70051360



Falling Star™ White  
70051356

## Starcluster™

PENTAS LANCEOLATA



- **BIG AND BOLD AND BEATS THE HEAT**
- Strong habits, big flowers and bold colors makes Starcluster the ultimate heat loving color
- Upright habits are ideal for impactful summer combinations
- Vibrant blooms are a magnet for pollinators



### Specifications

Height	18–22"
Width	22–24"
Vigor	M
Habit	Upright
USDA Zone	9–11
AHS Heat Zone	12–1
Forms Available	URC, CC

### Recommended Containers

SIZE	PPP	FINISH TIME
2.5 qt	1	8–10 weeks
3 qt	1–2	10–12 weeks



Starcluster™ Appleblossom  
70020709



Starcluster™ Lavender  
70020684



Starcluster™ Pink  
70051347



Starcluster™ Red Imp.  
70051350



Starcluster™ Rose  
70020712



Starcluster™ Violet  
70020716



Starcluster™ White  
70020706

# DEKKO™

DARE TO BE DIFFERENT

PETUNIA HYBRIDA



- **DARE TO BE DIFFERENT**
- Exceptional garden performance sets Dekko apart from the crowd
- A wide range of core and unique colors are perfect for adding wow to mixed combos and baskets
- Versatile habits work great from small pots all the way to the landscape



VEGETATIVE | ANNUALS

### Specifications

Height	8–12"
Width	18–22"
Vigor	M
Habit	Spreading
USDA Zone	9–10
AHS Heat Zone	12–1
Forms Available	URC

### Recommended Containers

SIZE	PPP	FINISH TIME
<b>Packs</b>	1	5–6 weeks
<b>1 qt</b>	1	5–6 weeks
<b>2.5 qt</b>	1	8–10 weeks
<b>3 qt</b>	1–2	9–10 weeks
<b>1.5 gal HB</b>	3–5	10–12 weeks
<b>2 gal HB</b>	3–5	10–12 weeks

# PETUNIA



Dekko™ Blue  
70004072



Dekko™ Dark Lavender  
70061522



Dekko™ Lavender Eye  
70008029



Dekko™ Orange  
70061532



Dekko™ Purple  
70061519



Dekko™ Red  
70008026



Dekko™ Salmon  
70061518



Dekko™ Sky Blue  
70066668



Dekko™ Star Rose  
70020321



Dekko™ White  
70066650

# PETUNIA

## Sanguna®

PETUNIA HYBRIDA



- **BOLD AND BRIGHT AND BEST FOR BASKETS**
- Big flowers and bright colors are ideal for impactful hanging baskets and combos
- Strong habits fill fast and are covered in color from top to bottom
- The ultimate spring mixer and a foundation of many best-selling Kwik Kombos™

### Specifications

Height	10–14"
Width	20–24"
Vigor	V
Habit	Trailing
USDA Zone	9–10
AHS Heat Zone	12–1
Forms Available	URC

### Recommended Containers

SIZE	PPP	FINISH TIME
2.5 qt	1	8–10 weeks
3 qt	1–2	9–11 weeks
1.5 gal HB	3–5	10–12 weeks
2 gal HB	3–5	10–12 weeks



Sanguna® Atomic Blue  
70004023



Sanguna® Blue Imp.  
70004044



Sanguna® Blue Vein  
70004034



Sanguna® Burgundy  
70004047



Sanguna® Hot Rose  
70061526



Sanguna® Lavender Vein  
70004021



Sanguna® Light Blue  
70055233



Sanguna® Lipstick Imp.  
70066655

# PETUNIA



Sanguna® Picotee Punch  
70053695



Sanguna® Pink Vein  
70008018



Sanguna® Purple Imp.  
70053694



Sanguna® Radiant Blue  
70053693



Sanguna® Red Imp.  
70055241



Sanguna® Rose Vein  
70004025



Sanguna® Salmon  
70055252



Sanguna® Sweet Pink  
70051190



Sanguna® White Imp.  
70061535



Sanguna® White Vein  
70004043



Sanguna® Yellow  
70061525



## Sanguna® Patio

PETUNIA HYBRIDA



- **AWESOME EARLY**
- Compact and early flowering habits go to market first, full, and in flower
- Controlled and upright, makes Sanguna Patio the ideal choice for high density production in small containers
- Grown cool, Sanguna Patio requires little to no PGRs or pinching and holds its shape covered in color



### Specifications

Height	10–14"
Width	10–14"
Vigor	C
Habit	Upright
USDA Zone	9–10
AHS Heat Zone	12–1
Forms Available	URC

### Recommended Containers

SIZE	PPP	FINISH TIME
2.5 qt	1	8–10 weeks
3 qt	1–2	9–11 weeks



Sanguna® Patio Blue  
70055260



Sanguna® Patio Blue Morn  
70061539



Sanguna® Patio Blue Vein  
70061517



Sanguna® Patio Pink Morn  
70055259



Sanguna® Patio Purple  
70051199



Sanguna® Patio Radiant Rose  
70055263



Sanguna® Patio Red  
70051200



Sanguna® Patio Salmon  
70008016

# SALVIA

## Velocity™

SALVIA FARINACEA



Velocity™ Blue  
70020736

- **FINISHES FAST AND FULL OF COLOR**
- Bold blue flower spikes are the perfect thriller for upscale spring combos
- No brainer color that's easy to finish and thrives for the end consumer
- Vivid tubular blooms are a magnet for pollinators all season long

### Specifications

Height	12–16"
Width	10–12"
Vigor	M
Habit	Upright
USDA Zone	9–10
AHS Heat Zone	12–1
Forms Available	URC

### Recommended Containers

SIZE	PPP	FINISH TIME
1 qt	1	5–6 weeks
2.5 qt	1	8–9 weeks

# SCAEVOLA

## Bombay®

SCAEVOLA AEMULA



Bombay® Dark Blue Imp.  
70020771



Bombay® Pink Imp.  
70050923



Bombay® White Imp.  
70020780

- **A DOWN UNDER WONDER THAT THRIVES THROUGH EXTREME HEAT**
- Strong trailing habits are the ideal choice for summer baskets and combos
- Dark blues and bright whites thrive even when temperatures are at their hottest
- The ultimate summer mixer and a foundation of many best-selling Heat Lover Kwik Kombos™

### Specifications

Height	8–12"
Width	18–22"
Vigor	V
Habit	Trailing
USDA Zone	9–11
AHS Heat Zone	12–1
Forms Available	URC, CC

### Recommended Containers

SIZE	PPP	FINISH TIME
2.5 qt	2–4	8–10 weeks
1.5 gal HB	3–5	10–12 weeks
2 gal HB	3–5	10–12 weeks





VERBENA HYBRIDA



- **PERFORMANCE NEVER GOES OUT OF STYLE**
- Class-leading disease resistance ensures Lanai looks great from grower to garden
- Strong trailing habits are ideal for hanging baskets and mixed combinations
- A huge assortment of bright and bold colors make combos pop and are the foundation for many best-selling Kwik Kombos™



### Specifications

Height	6–10"
Width	20–24"
Vigor	V
Habit	Trailing
USDA Zone	9–10
AHS Heat Zone	12–1
Forms Available	URC

### Recommended Containers

SIZE	PPP	FINISH TIME
1 qt	1	4–6 weeks
2.5 qt	1	6–8 weeks
2 gal HB	3–5	10–12 weeks
3 gal HB	3–5	10–12 weeks

# VERBENA

VEGETATIVE | ANNUALS



Lanai® Blue  
70004382



Lanai® Blue Denim  
70004398



Lanai® Blue Eyes  
70054659



Lanai® Bright Eye  
70008025



Lanai® Deep Pink  
70004386



Lanai® Deep Purple  
70004387



Lanai® Early Dark Red  
70060817



Lanai® Lavender Star  
70004388



Lanai® Magenta  
70021349



Lanai® Neon Rose  
70060805



Lanai® Peach  
7001288



Lanai® Pink  
70054663

# VERBENA



Lanai® Purple Star  
70004399



Lanai® Red  
70004390



Lanai® Red Star  
70060815



Lanai® Royal Purple with Eye  
70004391



Lanai® Scarlet with Eye  
70021317



Lanai® White  
70051372



VEGETATIVE | ANNUALS

## Lanai® Compact

VERBENA HYBRIDA



- **THE LANAI YOU KNOW AND LOVE, NOW IN A MORE CONTROLLED PACKAGE**
- Controlled mounded habits are ideal for smaller containers and baskets
- Class-leading disease resistance ensures Lanai Compact looks great from grower to garden
- Vibrant blooms are the perfect spring mixer and a foundation in many best-selling Kwik Kombos™



### Specifications

Height	4–6"
Width	12–14"
Vigor	M
Habit	Trailing
USDA Zone	9–10
AHS Heat Zone	12–1
Forms Available	URC

### Recommended Containers

SIZE	PPP	FINISH TIME
2.5 qt	1	6–8 weeks
3 qt	1–2	8–10 weeks
1.5 gal HB	3–5	10–12 weeks



Lanai® Compact Lime Green  
70021307



Lanai® Compact Red  
70051383



Lanai® Compact Red Star  
70060847



Lanai® Compact Scarlet Imp.  
70054688



Lanai® Compact Twister™ Purple  
70060849



Lanai® Compact White  
70060849

## Lanai® Premium

VERBENA HYBRIDA



- PREMIUM COLORS AND PURE INNOVATION
- Ground breaking colors and patterns
- The original and still the best series for disease resistance
- Perfect for exciting and upscale combinations



### Specifications

Height	6–10"
Width	20–24"
Vigor	V
Habit	Trailing
USDA Zone	9–10
AHS Heat Zone	12–1
Forms Available	URC

### Recommended Containers

SIZE	PPP	FINISH TIME
1 qt	1	4–6 weeks
2.5 qt	1	6–8 weeks
2 gal HB	3–5	10–12 weeks



Lanai® Candy Cane  
70021343



Lanai® Twister™ Amethyst  
70054662



Lanai® Twister™ Burgundy  
70060826



Lanai® Twister™ Pink  
70008020



Lanai® Twister™ Purple  
70054665



Lanai® Twister™ Red  
70054675



Lanai® Vintage  
70054686

## Lanai® Upright

VERBENA HYBRIDA



- COLOR PER SQUARE FOOT NEVER LOOKED SO GOOD
- The best verbena for high density pot tight production
- Upright mounded habits won't split and hold up from grower to garden
- The perfect pop of color for bold combinations

### Specifications

Height	8–12"
Width	12–14"
Vigor	C
Habit	Upright
USDA Zone	9–10
AHS Heat Zone	12–1
Forms Available	URC

### Recommended Containers

SIZE	PPP	FINISH TIME
1 qt	1	4–6 weeks
2.5 qt	1	6–8 weeks
3 qt	1–2	8–10 weeks



Lanai® Upright Blue with Eye  
70021299



Lanai® Upright Limoncello  
70060836



Lanai® Upright Pink with Eye  
70051301



Lanai® Upright Purple Mosaic  
70004401



Lanai® Upright Purple with Eye  
70054684



Lanai® Upright Red with Eye  
70054681



Lanai® Upright Rose with Eye  
70021298



Lanai® Upright Twister™ Purple  
70065893



Lanai® Upright Twister™ Red  
70065891



Lanai® Upright White  
70054676

# VERBENA

## Magelana™

VERBENA HYBRIDA



- **A CONSTANT CARPET OF COLOR**
- Tight densely branched habits are perfect for small pots
- Excels in in-ground planting creating a carpet of bright and bold colors
- Tough as nails landscape color that holds up from spring to fall



Magelana™ Hot Rose  
70004403



Magelana™ Lilac  
70004404



Magelana™ Lipstick  
70021336



Magelana™ Peach  
70051384



Magelana™ Plum Frost  
70007998



Magelana™ Violet  
70004394

### Specifications

Height	4–6"
Width	12–14"
Vigor	M
Habit	Trailing
USDA Zone	9–10
AHS Heat Zone	12–1
Forms Available	URC

### Recommended Containers

SIZE	PPP	FINISH TIME
1 qt	1	4–6 weeks
2.5 qt	1	6–8 weeks
3 qt	1–2	8–10 weeks

## Nirvana® Cascade

CATHARANTHUS ROSEUS



- **BUILDS BOLDER AND BRIGHTER BASKETS**
- Big blooms and trailing habits are perfect for upscale hanging baskets and combos
- Exceptional heat tolerance keeps Nirvana Cascade blooming through the intense heat of summer
- The perfect summer mixer that blends well with other trailing Heat Lovers like Carita Cascade Angelonia and Bombay Scaevola



Nirvana® Cascade Pink Splash  
70018378

### Specifications

Height	6–8"
Width	18–22"
Vigor	M
Habit	Trailing
USDA Zone	9–10
AHS Heat Zone	12–1
Forms Available	URC, CC

### Recommended Containers

SIZE	PPP	FINISH TIME
1.5 gal HB	4–5	8–10 weeks
2 gal HB	4–5	8–10 weeks

Delta™ Premium Marina Pansy



# Resources





# WHOLESALE BROKER LIST

- **Flower Seed Broker**
  - **Flower Vegetative Broker**
  - **Vegetable Seed Broker**
- 
- **Argenplugs S.A.**  
Casilla De Correo 194  
Provincia De Buenos Aires  
Argentina  
Phone: +1154 (348) 849-4040  
Fax: +1154 (114) 793-0368
- 
- **Arie Sonneveldt S.R.L.**  
Av. Caseros 435  
Buenos Aires, Argentina  
Phone: +1154 (114) 307-8044  
Fax: +1154 (114) 307-8955  
www.plugs.com.ar
- 
- ● **Ball Horticultural Company**  
622 Town Rd  
West Chicago, IL 60185  
USA  
Phone: +1 (630) 231-3500  
Fax: +1 (630) 231-3605  
www.ballhort.com
- 
- ● **BFG Supply Co.**  
14500 Kinsman Rd  
Burton, OH 44021  
USA  
Phone: +1 (800) 883-0234  
Fax: +1 (800) 368-4759  
www.bfgsupply.com
- 
- **Bill Moore & Company, Inc.**  
P.O. Box 1587  
Brandon, FL 33509  
USA  
Phone: +1 (800) 237-7794  
Fax: +1 (813) 684-5856  
www.billmooreco.com
- 
- **Bob Soos Company, LLC**  
P.O. Box 9  
Middleville, MI 49333  
USA  
Phone: +1 (269) 795-7890  
Fax: +1 (269) 795-7891
- 
- ● **Burrell Seed Growers Company, D.V.**  
P.O. Box 150  
Rocky Ford, CO 81067  
USA  
Phone: +1 (719) 254-3318  
Fax: +1 (719) 254-3319  
www.burrellseeds.us
- 
- **Costanzi, Jorge Anibal**  
Avenida San Martin 920/922  
B1877Agn - Don Bosco  
Provincia De Buenos Aires  
Argentina  
Phone: +1154 (114) 252-8402  
Fax: +1154 (114) 251-0016
- 
- **Dos Cordilleras**  
Dick Houter; Casilla Postal 33  
Quillota, V-Region  
Chile  
Phone: +1156 (947) 94-661  
Fax: +1156 (332) 60-059
- 
- **Earl May Seed & Nursery**  
208 North Elm St  
Shenandoah, IA 51603  
USA  
Phone: +1 (712) 246-1020  
Fax: +1 (712) 246-1760  
www.earlmay.com
- 
- **Eason Horticultural Resources, Inc.**  
939 Helen Ruth Dr  
Fort Wright, KY 41017  
USA  
Phone: +1 (800) 214-2221  
Fax: +1 (859) 578-2266  
www.ehrnet.com
- 
- ● **Express Seed Company**  
51051 U.S. Hwy 20  
Oberlin, OH 44074  
USA  
Phone: +1 (800) 221-3838  
Fax: +1 (440) 774-2892  
www.expressseed.com
- 
- **Florensa Argentina S.A.**  
Calle de la Semillaria 5012  
Cordoba  
Argentina  
Phone: +1154 (351) 155-295950  
Fax: +1154 (351) 496-1500  
www.florensa.com.ar
- 
- ● **Fred C. Gloeckner & Co., Inc**  
550 Mamaroneck Ave, Ste 510  
Harrison, NY 10528  
USA  
Phone: +1 (914) 698-2300  
Fax: +1 (914) 698-2857  
www.fredgloeckner.com
- 
- **GeoSeed**  
121 Gary Rd  
Hodges, SC 29653  
USA  
Phone: +1 (864) 227-5117  
Fax: +1 (864) 227-5108  
www.geoseed.com
- 
- ● **Germania Seed Company**  
5978 North Northwest Hwy  
P.O. Box 31787  
Chicago, IL 60631  
USA  
Phone: +1 (800) 380-4721  
Fax: +1 (800) 410-4721  
www.germaniaseed.com
- 
- ● **Griffin**  
4951 Indiana Ave  
Suite 100  
Lisle, IL 60532  
USA  
Phone: +1 (800) 323-7253  
Fax: +1 (630) 969-6373  
www.griffins.com
- 
- ● **Grimes Horticulture**  
11335 Concord-Hambden Rd  
Concord, OH 44077  
USA  
Phone: +1 (888) 241-7333  
www.grimes-horticulture.com
- 
- **Guaqueta Trading Group**  
Diagonal 109 No 20-52  
Bogota  
Colombia  
www.guaquetatrading.com
- 
- **Guaqueta**  
7951 NW 64th St  
Miami, FL 33166  
USA  
Phone: +1 (305) 500-9362  
Fax: +1 (305) 433 2114  
www.guaqueta.com
- 
- ● **Halifax Seed – Halifax**  
5860 Kane St  
Halifax, NS, B3K 5L8  
Canada  
Phone: +1 (902) 454-7456  
Fax: +1 (902) 455-5271  
www.halifaxseed.ca
- 
- ● **Halifax Seed – Saint John**  
664 Rothesay Ave  
Saint John, NB, E2L 3T5  
Canada  
Phone: +1 (506) 633-2032  
Fax: +1 (506) 632-9340  
www.halifaxseed.ca
- 
- ● **Harris Seeds / Garden Trends**  
355 Paul Rd  
Rochester, NY 14624  
USA  
Phone: +1 (585) 935-7018  
Fax: +1 (585) 295-3609  
www.harrisseed.com
- 
- ● **Henry F. Michell Company**  
225 West Church Rd  
P.O. Box 60160  
King Of Prussia, PA 19406  
USA  
Phone: +1 (800) 422-4678  
Fax: +1 (610) 265-4208  
www.michells.com
- 
- **HPS Catalog**  
334 W. Stroud St  
Randolph, WI 53956  
USA  
Phone: +1 (800) 322-7288  
www.hpsseed.com
- 
- ● **Ivy Garth Seeds & Plants Inc.**  
8422 Mayfield Rd  
Chesterland, OH 44026  
USA  
Phone: +1 (440) 729-7690  
Fax: +1 (440) 729-7692  
www.ivygarth.com
- 
- ● **J.W. Jung Seed Company**  
335 S High St  
Randolph, WI 53956  
USA  
Phone: +1 (920) 326-3121  
Fax: +1 (920) 326-5769  
www.jungseed.com
- 
- ● **Johnny's Selected Seeds**  
955 Benton Ave  
Winslow, ME 4901  
USA  
Phone: +1 (207) 861-3900  
Fax: +1 (207) 861-8381  
www.johnnyseeds.com
- 
- **Joseph Giannino Company**  
17 North Rd  
East Kingston, NH 3827  
USA  
Phone: +1 (888) 948-2001  
Fax: +1 (603) 642-9230  
www.josephgiannino.com

# WHOLESALE BROKER LIST

## ●● JVK

1894 Seventh St  
P.O. Box 910  
St. Catharines, ON L2R 6Z4  
Canada  
Phone: +1 (905) 641-5599  
Fax: +1 (888) 733-3585  
www.jvk.net

## ● Koenig & Associates, Inc

5130 Mexico Rd  
St. Peters, MO 63376  
USA  
Phone: +1 (636) 441-1741  
Fax: +1 (363) 447-4266

## ● Lindenberg Seeds Ltd.

803 Princess Ave  
Brandon, MB R7A 0P5  
Canada  
Phone: +1 (204) 727-0575  
Fax: +1 (204) 727-2832  
www.lindenbergseeds.mb.ca

## ● McHutchinson

64 Mountain View Blvd  
Wayne, NJ 07470  
USA  
Phone: +1 (800) 943-2230  
Fax: +1 (866) 234-8884  
www.mchutchison.com

## ●● Messick Company LLC

142 N. Central Ave  
Campbell, CA 95008  
USA  
Phone: +1 (408) 871-9816  
Fax: +1 (408) 871-9839  
www.messickco.com

## ● Modena Seed Company, Inc.

P.O. Box 12007  
5727 Mission St  
San Francisco, CA 94112  
USA  
Phone: +1 (415) 585-2324  
Fax: +1 (415) 585-6820  
www.modenaseed.com

## ●● New England Seed Company

122 Park Ave, Bldg H  
East Hartford, CT 06108  
USA  
Phone: +1 (860) 724-1240  
Fax: +1 (860) 724-1273  
www.neseed.com

## ●●● Norseco, Inc.

2914 Cure-Labelle Blvd  
Laval, QC H7P 5R9  
Canada  
Phone: +1 (800) 561-9693  
Fax: +1 (800) 567-4694  
www.norseco.com

## ●● Ontario Seed Company

77 Wellington Street South  
Kitchener, Ontario  
Canada  
Phone: +1 (519) 886-0557  
Fax: +1 (519) 886-0605  
www.oscseeds.com

## ●● Park Seed Wholesale

1 Parkton Ave  
Greenwood, SC 29647  
USA  
Phone: +1 (800) 845-3366  
Fax: +1 (800) 209-0360  
www.parkwholesale.com

## ● The Raymond Perri Company, Inc.

8 Winding Trails Rd.  
Pine Bush, NY 12566  
USA  
Phone: +1 (845) 744-6801  
Fax: +1 (845) 744-8473

## ● Ron Iwasaki Horticultural Sales

25500 Melott Rd  
Hillsboro, OR 97123  
USA  
Phone: +1 (503) 628-1969  
Fax: +1 (503) 628-1122

## ● The Seed Den

P.O. Box 1528  
Albany, OR 97321  
USA  
Phone: +1 (541) 812-6211  
Fax: +1 (541) 812-6212  
www.theseedden.com

## ● Sementes Van Leeuwen Ltda.

Av. 20 de Março, 1087 Centro  
Parei Novo - RS Cep  
Brazil  
Phone: (51) 3633-9393  
www.sementesvanleeuwen.com.br

## ● Semillas Del Mercosur

Calle Diego Portales Numero 581  
Poblacion Los Lucumos  
Quillota, V-Region  
Chile

## ● Semillas Tinajero,

Violeta 81, Barrios De Belen  
Xoch D.F. 16070  
Mexico  
Phone: +1152 (555) 489-3666  
Fax: +1152 (555) 675-3326  
www.semillastinajero.mx

## ● State Nursery & Seed Company

P.O. Box 1187  
Helena, MT 59624  
USA  
Phone: +1 (406) 442-2610  
Fax: +1 (406) 449-6207

## ●● Stokes Seeds Inc

P.O. Box 548  
Buffalo, NY 14240  
USA  
Phone: +1 (905) 688-3634  
Fax: +1 (905) 684-6106  
www.stokeseeds.com

## ●● T & T Seeds, Ltd.

7724 Robin Blvd  
Winnipeg, MB R4H 1B1  
Canada  
Phone: +1 (204) 895-9962  
Fax: +1 (204) 895-9967  
www.ttseeds.com

## ●● Territorial Seed Company

P.O. Box 157  
Cottage Grove, OR 97424  
USA  
Phone: +1 (541) 942-9547  
Fax: +1 (541) 942-9881  
www.territorial-seed.com

## ● Tsukasa Shoji S.A.

Casilla De Correo No 11; (1893)  
Centro Agricola El Pato  
Buenos Aires,  
Argentina 1983  
Phone: +1154 (022) 294-98550  
Fax: +1154 (022) 294-98551

## ●● Twilley Seed

121 Gary Rd  
Hodges, SC 29653  
USA  
Phone: +1 (864) 227-5140  
www.twilleyseed.com

## ● Valley Horticultural Seeds

P.O. Box 952  
Mission, TX 78573  
USA  
Phone: +1 (956) 585-2115  
Fax: +1 (956) 585-0869

## ● Vaughan's Horticulture

40 Shuman Blvd #175  
Naperville, IL 60563  
USA  
Phone: +1 (855) 864-3300  
Fax: +1 (855) 864-5790  
www.vaughans.com

## ●● Vis Seed Company, Inc.

153 La Porte Street  
P.O. Box 661953  
Arcadia, CA 91006  
USA  
Phone: +1 (626) 445-1233  
Fax: +1 (626) 445-3779  
www.visseed.com

## ● WeHoP (Western Horticulture Products, Inc.)

P.O. Box 1109  
Port Hadlock, WA 98339  
USA  
Phone: +1 (800) 669-6480  
Fax: +1 (360) 344-3555  
www.wehop.com

## ●● West Coast Seeds

5300 34B Ave  
Delta, BC, V4L 2P1  
Canada  
Phone: +1 (604) 952-8820  
Fax: +1 (604) 952-8828  
www.westcoastseeds.com

## ●● William Dam Seeds

279 Hwy 8 Rr 1  
Dundas, ON L9H 5E1  
Canada  
Phone: +1 (905) 628-6641  
www.damseeds.com

## ●● Wyatt Quarles Seed Company

730 Hwy 70 West  
Garner, NC 27529  
USA  
Phone: +1 (919) 772-4243  
Fax: +1 (919) 772-4278  
www.wqseeds.com



◆ Geranium

◆ NGI

◆ Annual

◆ Poinsettia

◆ Mum

◆ Dipladenia

◆ Perennial

◆◆◆◆ Al's Garden Center & Greenhouse

7505 SE Hogan Rd  
Gresham, OR 97080  
USA  
Phone: +1 (503) 491-0771  
www.als-gardencenter.com

◆◆◆ Aris Horticulture  
(Keepsake/Green Leaf Plants)

115 Third St S.E.  
Barberton, OH 44203  
USA  
Phone: +1 (330) 745-2143  
Fax: +1 (330) 745-3098  
www.arishort.com

◆◆◆◆◆ Barone Gardens

6200 S Bay Rd  
Cicero, NY 13039  
USA  
Phone: +1 (315) 699-4724  
Fax: +1 (315) 699-2081  
www.bgardens.com

◆ Battlefield Farms / Heritage

23190 Clarks Mountain Rd  
Rapidan, VA 22733  
USA  
Phone: +1 (800) 722-0744  
www.battlefieldfarms.com

◆◆◆◆◆ Burnaby Lake Greenhouses

17250 80th Ave  
Surrey, BC V4N 6J6  
Canada  
Phone: +1 (604) 576-2088  
www.burlake.com

◆◆◆◆◆ C. Raker & Sons, Inc.

10371 Rainey Rd  
Litchfield, MI 49252  
USA  
Phone: +1 (517) 542-2316  
Fax: +1 (517) 542-2565  
www.raker.com

◆ Center Greenhouses

1550 E 73rd Ave  
Denver, CO 80229  
USA  
Phone: +1 (303) 288-1209  
www.centergreenhouse.com

◆ D & D Farms

32 Hudson Rd  
Stow, MA 01775  
USA  
Phone: +1 (978) 897-7569

◆◆◆◆◆ D.S. Cole Growers

251 N Village Rd  
Loudon, NH 03307  
USA  
Phone: +1 (603) 783-9561  
Fax: +1 (603) 783-9562  
www.dscolegrowers.com

◆ Deibel

6810 W Hwy 146  
Crestwood, KY 40014  
USA  
Phone: +1 (502) 241-4459

◆◆◆◆◆ DGI Propagators

7073 40th Ave  
Hudsonville, MI 49426  
USA  
Phone: +1 (616) 669-0552  
www.dgiprop.com

◆◆ Esbenshade

546 E 28th Division Hwy  
Lititz, PA 17543  
USA  
Phone: +1 (717) 626-7007  
www.esbenshades.com

◆ Five Acre Farm

110 Hinsdale Rd  
Northfield, MA 01360  
USA  
Phone: +1 (413) 498-2208

◆◆ Frisby Greenhouse

23106 S 4390 Rd  
Vinita, OK 74301  
USA  
Phone: +1 (918) 759-8764  
www.frisbygreenhouse.com

◆◆◆◆◆ Green Circle Growers

15809 State Rte 511  
Oberlin, OH 44074  
USA  
Phone: +1 (440) 775-1411  
Fax: +1 (440) 774-1465  
www.greencirclegrowers.com

◆◆ Greenstreet Growers

PO Box 410  
Tracys Landing, MD 20711  
USA  
Phone: +1 (410) 867-9500  
www.growgreenstreet.com

◆◆◆◆◆ Gro N' Sell Inc.

320 Lower State Rd  
Chalfont, PA 18914  
USA  
Phone: +1 (215) 822-1276  
www.gro-n-sell.com

◆ Gulley Greenhouse and Garden Center

6029 S Shields St  
Fort Collins, CO 80526  
USA  
Phone: +1 (800) 642-8028  
www.gulleygreenhouse.com

◆ James Greenhouse

1699 Crawford Smithonia Rd  
Colbert, GA 30628  
USA  
Phone: +1 (706) 742-7802  
www.jamesgreenhouses.com

◆ Jay W. Guild Wholesale Growers

36400 County Rd 48  
Peconic, NY 11958  
USA  
Phone: +1 (631) 765-5299  
Fax: +1 (631) 765-9479

◆ Jolly Farmer

PO Box 787  
Bangor, ME 04401  
USA  
Phone: +1 (506) 325-3850  
Fax: +1 (800) 863-7814  
www.jollyfarmer.com

◆◆◆◆◆ Knox Nursery, Inc.

940 Avalon Rd  
Winter Garden, FL 34787  
USA  
Phone: +1 (407) 654-1972  
www.knoxnursery.com

◆◆ Kube-Pak Corp

194 Rte 526  
Allentown, NJ 08501  
USA  
Phone: +1 (609) 259-3114  
www.kubepak.com

◆◆◆◆◆ Linwell Gardens

4760 Lincoln Ave  
Beamsville, ON  
Canada  
Phone: +1 (888) 925-8377  
www.linwellgardens.com

◆◆◆◆◆ Lucas Greenhouses

1049 Whig Ln  
Monroeville, NJ 08343  
USA  
Phone: +1 (856) 881-0234  
www.lucasgreenhouses.com

# ROOT 'N' SELLS

## ◆◆◆◆◆ Malmborgs Inc.

20045 County Rd 81  
Rogers, MN 55374  
USA  
Phone: +1 (763) 428-2061  
Fax: +1 (763) 428-8408  
www.malmborgsinc.com

## ◆◆◆◆◆ Mast Young Plants

1780 4 Mile Rd NW  
Grand Rapids, MI 49544  
USA  
Phone: +1 (616) 784-0583  
www.mastyoungplants.com

## ◆◆◆◆◆ N.G. Heimos Greenhouses / Millstadt Young Plants

6627 State Rte 158  
Millstadt, IL 62260  
USA  
Phone: +1 (618) 476-7200  
www.ngheimosgreenhouses.com

## ◆◆◆◆◆ Noel Wilson & Sons

1776 Notre Dame  
St Remi, QC  
Canada  
Phone: +1 (450) 454-9210  
Fax: +1 (450) 454-6496

## ◆ Northwest Horticulture

14113 River Bend Rd,  
Mount Vernon, WA 98273  
USA  
Phone: +1 (800) 753-8372  
Fax: +1 (360) 428-0155  
www.northwesthort.com

## ◆ Oglesby

15168 NW Oglesby Rd  
Altha, FL 32421  
USA  
Phone: +1 (850) 762-3296  
Fax: +1 (850) 762-3229  
www.oglesbytc.com

## ◆◆◆◆◆ Pacific Growers

9131 Markworth Rd  
Blaine, WA 98230  
USA  
Phone: +1 (360) 354-1977  
Fax: +1 (360) 354-8677  
www.pacificgrowersinc.com

## ◆ Pacific Plug and Liner

750 Casserly Rd  
Wastonville, CA 95076  
USA  
Phone: +1 (831) 722-5396  
www.ppanl.com

## ◆ Plainview Growers

229 Farm Rd  
Pompton Plains, NJ 07444  
USA  
Phone: +1 (973) 696-8574  
www.plainviewgrowers.com

## ◆ Pioneer Gardens

198 Mill Village Rd  
Deerfield, MA 01342  
USA  
Phone: +1 (413) 773-5360  
www.pioneergardens.com

## ◆◆ Plantpeddler

530 Second Ave S.W  
Cresco, IA 52136  
52136  
Phone: +1 (800) 827-1654  
Fax: +1 (563) 547-5792  
www.plantpeddler.com

## ◆◆ Pleasant View Gardens

7316 Pleasant St  
Pembroke, NH 03307  
USA  
Phone: +1 (603) 435-8361  
www.pvg.com

## ◆◆◆◆◆ Plug Connection

2627 Ramona Dr  
Vista, CA 92084  
USA  
Phone: +1 (760) 631-0992  
www.plugconnection.com

## ◆ Schaefer Greenhouses

120 S Lake St  
Montgomery, IL 60538  
USA  
Phone: +1 (630) 896-1936  
www.schaefergreenhouses.com

## ◆ Schenck Farms & Greenhouses

1396 South Service Rd  
St Catharines, ON L2R 6P9  
Canada  
Phone: +1 (905) 684-5478  
Fax: +1 (905) 684-5478  
www.schenckfarms.com

## ◆ Skagit Gardens

3100 Old Hwy 99 S Rd  
Mount Vernon, WA 98273  
USA  
Phone: +1 (360) 424-6144  
www.skagitgardens.com

## ◆◆◆◆◆ Sunbelt Greenhouses

200 Thompson Dr  
Douglas, GA 31535  
USA  
Phone: +1 (912) 384-3806  
www.sunbeltgreenhouses.com

## ◆ Swift Greenhouses

2724 300th St  
Gilman, IA 50106  
USA  
Phone: +1 (641) 478-3217  
www.swiftgreenhouses.com

## ◆ Timbuk Farms

2030 Timbuk Rd  
Granville, OH 43023  
USA  
Phone: +1 (740) 587-2178  
www.timbukfarms.com

## ◆◆◆◆◆ Van De Wetering Greenhouse

5784 Sound Ave  
Jamesport, NY 11947  
USA  
Phone: +1 (631) 722-8757  
Fax: +1 (631) 722-8765  
www.vdwgreenhouses.com

## ◆ Walter's Gardens

1992 96th Ave  
Zeeland, MI 49464  
USA  
Phone: +1 (616) 772-4697  
www.waltersgardens.com

## ◆◆◆◆◆ Welby Gardens Co. Inc.

2761 E 74th Ave  
Denver, CO 80229  
USA  
Phone: +1 (303) 288-3398  
www.hardyboyplant.com

## ◆◆◆◆◆ Wenke Greenhouses

2525 North 30th St  
Kalamazoo, MI 49048  
USA  
Phone: +1 (269) 349-7882  
www.wenkewholesale.com

## ◆ Wessel's Farms Inc.

94 Bull Rd  
Otisville, NY 10963  
USA  
Phone: +1 (845) 386-5681  
Fax: +1 (845) 386-5681  
www.wesselsfarms.com

# 2017-2018 DISCARDS & SUBSTITUTIONS

## SEED

DISCARD VARIETY	PRODUCT ID	SUBSTITUTE VARIETY	PRODUCT ID
Begonia Go-Go™ Cherry	70008038		
Begonia Go-Go™ Salmon	70008042		
Dianthus Diabunda™ Crimson	70019224	Diabunda™ Red	70019212
Dianthus Super Parfait™ Crimson Star	70052742		
Geranium Pinto™ Blush	70000796	Pinto™ Deep Rose	70035021
Geranium Pinto™ Premium Scarlet	70006958	Pinto™ Premium Deep Scarlet	70020522
Geranium Ringo 2000™ Formula Mix	70000805	Pinto™ Premium Mixture	70056148
Gerbera Jaguar™ Orange Picotee	70000975		
Gerbera Jaguar™ White	70000980		
Impatiens Accent™ Premium Limited Edition Mix	70038517	Accent™ Premium Mix	70038516
Impatiens Xtreme™ Deep Salmon	70007940		
Impatiens Xtreme™ Punch	70036403	Xtreme™ Bright Rose	70036401
Marigold Moonstruck® Orange	70000572	Inca™ II Orange	70000520
Pansy Colossus™ Pure Rose	70000388	Colossus™ Rose with Blotch	70000428
Pansy Delta™ Premium Yellow with Purple Wing	70053726	Delta™ Premium Yellow with Purple Wing Imp.	70058914
Pansy Karma™ Fire	70007804	Delta™ Fire	70000360
Pansy Karma™ Lemon	70000417	Delta™ Premium Pure Primrose	70000435
Pansy Karma™ Pink with Blotch	70034939	Delta™ Pink Shades	70000419
Pansy Karma™ Purple	70007808		
Pansy Karma™ Red with Blotch	70006162	Delta™ Premium Red with Blotch	70008805
Pansy Karma™ Rising Sun	70000393		
Pansy Karma™ Rose	70007811		
Pansy Karma™ Rose Fire	70007813		
Pansy Karma™ Rose with Blotch	70046107	Delta™ Premium Rose with Blotch	70000445
Pansy Karma™ White with Blotch	70006167	Delta™ Premium White with Blotch	70000446
Pansy Mariposa™ Black	70035212		
Pansy Mariposa™ Blotch Mix	70021020		
Pansy Mariposa™ Blue Over Yellow	70007790		
Pansy Mariposa™ Blue with Blotch	70041116		
Pansy Mariposa™ Marina	70007780		
Pansy Mariposa™ Mix	70021001		
Pansy Mariposa™ Orange	70007781		
Pansy Mariposa™ Orange with Blotch	70007791		
Pansy Mariposa™ Peach Shades	70035211		
Pansy Mariposa™ Purple	70039330		

# 2017–2018 DISCARDS & SUBSTITUTIONS

DISCARD VARIETY	PRODUCT ID	SUBSTITUTE VARIETY	PRODUCT ID
Pansy Mariposa™ Red Wing	70007794		
Pansy Mariposa™ Red with Blotch	70007782		
Pansy Mariposa™ True Blue	70007785		
Pansy Mariposa™ Violet with Face	70007786		
Pansy Mariposa™ White	70007776		
Pansy Mariposa™ White with Blotch	70007795		
Pansy Mariposa™ Yellow	70007787		
Pansy Mariposa™ Yellow with Blotch	70007796		
Petunia Ramblin™ Sugar Plum	70027333	Ramblin™ Sugar Plum Imp.	70041031
Petunia TriTunia™ Pink Veined	70065682	TriTunia™ Pink Veined Imp.	70037057
Petunia TriTunia™ Salmon	70065683	Tritunia™ Salmon Imp.	70040996
Snapdragon Arrow™ Deep Red	70001207	Snaptastic™ Red	70048616
Snapdragon Arrow™ Magenta	70039299	Snaptastic™ Magenta	70048621
Snapdragon Arrow™ Mix	70006445	Snaptastic™ Mix	70069302
Snapdragon Arrow™ Orange	70006433	Snaptastic™ Orange Flame	70048614
Snapdragon Arrow™ Pink	70001206	Snaptastic™ Pink	70048619
Snapdragon Arrow™ Red Yellow Bicolor	70018041	Snaptastic™ Orange Flame	70048614
Snapdragon Arrow™ White	70001205	Liberty™ Classic White	70017983
Snapdragon Arrow™ Yellow	70001202	Snaptastic™ Yellow	70048611
Verbena Tuscany™ Violet with Eye	70024263	Obsession™ Burgundy with Eye	70000520
Vinca Cora® Cascade Magenta	70018418	Cora™ Cascade Violet	70051971
Viola Endurio® Pure Yellow	70000468	Endurio® Yellow Imp.	70058786
Viola Penny™ Azure Twilight	70007891	Penny™ Azure Dawn	70035185
Viola Penny™ Lavender Shades	70021046		
Viola Penny™ Orchid	70021089		
Viola Penny™ Yellow Jump-up	70021029	Penny™ Yellow Jump-up Imp.	70059685

syngenta flowers®

# 2017-2018 DISCARDS & SUBSTITUTIONS

## VEGETATIVE

DISCARD VARIETY	PRODUCT ID	SUBSTITUTE VARIETY	PRODUCT ID
Argyranthemum Sassy® Compact White	70003297	Sassy® White	70066240
Argyranthemum Sassy® Pink	70003298	Sassy® Rose	70003326
Calibrachoa Callie® Bright Red	70003280	Callie® Dark Red	70068741
Calibrachoa Callie® Cream with Eye	70003285	Callie® White Imp.	70052153
Calibrachoa Callie® Deep Yellow	70003286	Callie® Yellow Imp.	70035954
Calibrachoa Callie® Orange Sunrise	70007860	Callie® Orange Sunrise Imp.	70018467
Calibrachoa Callie® Purple	70003291	Callie® Purple Imp.	70051253
Calibrachoa Callie® Star Coral	70003289	Callie® Star Pink	70018437
Calibrachoa Callie® White	70008022	Callie® White Imp.	70052153
Calibrachoa Callie® Yellow	70018449	Callie® Yellow Imp.	70035954
Geranium — Ivy Temprano™ White	70004192	Temprano™ White Imp.	70065950
Geranium — Zonal Fidelity® Deep Lavender	70007999		
Geranium — Zonal Fidelity® Hot Pink	70004143		
Geranium — Zonal Fidelity® Magenta	70004139		
Geranium — Zonal Fidelity® Salmon	70004137		
Impatiens Butterfly® Deep Pink	70019682		
Impatiens Butterfly® Salmon with Eye	70019685		
Impatiens Spellbound® Blackberry Star	70003737		
Impatiens Spellbound® Pink Splash	70019665		
Impatiens Spellbound® Royal Purple	70003728		
Impatiens Spellbound® White	70019664		
Ipomoea Sidekick™ Lime	70003180	Sidekick™ Lime Imp.	70028150
Lantana Bandana® Light Yellow	70019842	Bandana® Yellow	70060717
Lobelia Techno® Heat Light Blue	70008009	Techno® Heat Light Blue Imp.	70053408
New Guinea Impatiens Sonic® Deep Purple	70003791	Sonic® Deep Purple Imp.	70066412
New Guinea Impatiens Sonic® White	70003746	Sonic® White Imp.	70066410
Osteospermum Tradewinds® Pink	70003907	Tradewinds® Light Purple	70008085
Osteospermum Tradewinds® Purple Bicolor	70003914	Tradewinds® Light Purple	70008085
Osteospermum Tradewinds® Terracotta	70006922	Tradewinds® Terracotta Imp.	70055272
Osteospermum Tradewinds® White	70003908	Tradewinds® White Imp.	70020017
Osteospermum Tradewinds® Yellow	70020022	Tradewinds® Yellow Imp.	70061545
Petunia Picnic™ Amethyst	70007893	Dekko™ Sky Blue	70066668
Petunia Picnic™ Red	70007892	Dekko™ Red	70008026
Petunia Picnic™ Rose	70007894		

# 2017-2018 DISCARDS & SUBSTITUTIONS

DISCARD VARIETY	PRODUCT ID	SUBSTITUTE VARIETY	PRODUCT ID
Petunia Picnic™ Violet	70020325	Dekko™ Blue	70004072
Petunia Picnic™ White	70055268	Dekko™ White	70066650
Petunia Sanguna® Blue	70004067	Sanguna® Blue Imp.	70004044
Petunia Sanguna® Lipstick	70004030	Sanguna® Lipstick Imp.	70066655
Petunia Sanguna® Plum Vein	70004070	Sanguna® Rose Vein	70004025
Petunia Sanguna® Purple	70020330	Sanguna® Purple Imp.	70053694
Petunia Sanguna® White Pearl	70004071	Sanguna® White Imp.	70061535
Petunia Whispers™ Amethyst	70020291	Dekko™ Sky Blue	70066668
Petunia Whispers™ Purple	70004060	Dekko™ Purple	70061519
Petunia Whispers™ White	70004063	Dekko™ White	70066650
Scaevola Bombay® Dark Blue	70020772	Bombay® Dark Blue Imp.	70020771
Scaevola Bombay® Pink	70004314	Bombay® Pink Imp.	70050923
Scaevola Bombay® White	70007851	Bombay® White Imp.	70020780
Verbena Lanai® Bright Pink	70004384	Lanai® Pink	70054663
Verbena Lanai® Strawberry and Cream	70004366	Lanai® Pink	70054663
Verbena Magelana™ White	70021293	Lanai® Compact White	70065900
Vinca Nirvana® Pink Blush	70003265		
Vinca Nirvana® Red	70003267		
Vinca Nirvana® Rose	70018380		
Vinca Nirvana® Violet	70003268		
Vinca Nirvana® White	70018382		

## VEGETATIVE ORDERING INFORMATION

Specs	Geraniums		New Guinea Impatiens		Dipladenia		Ipomoea		Spring Annuals		Kwik Kombos™
	URC	CC	URC	URC	CC	URC	URC	CC	URC		
Specs	100 URC/Bag 4% Overpack	100 URC/Bag 4% Overpack	100 URC/Bag 4% Overpack	100 URC/Bag 4% Overpack	100 URC/Bag 4% Overpack	100 URC/Bag 5% Overpack	100 URC/Bag 5% Overpack	100 URC/Bag 5% Overpack	100 URC/Bag 5% Overpack	100 URC/Bag 5% Overpack (3 Bags/KK)****	
Available Weeks	All Year	All Year	All Year	All Year*	All Year*	Weeks 41-26	All Year**	All Year**	All Year**		
Minimum Order	2,000	600	2,000	1,600	800	1,000	2,000	2,000	500		
Minimum Per Variety	100	100	100	100	800	100	100	100	100		
Variety Multiples	100	100	100	100	800	100	100	100	100		
Multiples Per Order	2,000	600	2,000	1,600	1,600	1,000	2,000	2,000	500		
Pack Per Box	2,000	600	2,000	1,600	800	2,000 Box***	4,000 Box***	4,000 Box***	500		

\*Some weeks limited

\*\*Limits on specific varieties off-peak

\*\*\*Available as half box – 2,000 cuttings

\*\*\*\*Two component Kwik Kombos™ come with two bags/KK



# Be inspired by *syngenta flowers*<sup>®</sup>



Combinations



Poinsettias



Perennials



Online



Home Garden  
Vegetables



Mums, Asters,  
Fleurettes



Cyclamen and  
Specialty Cool  
Season Crops

MORE FROM | SYNGENTA

**syngenta** *flowers*<sup>®</sup>

2280 Hecker Pass Highway

Gilroy, California 95020

---

p. (408) 847.7333 | (800) 549.0158 (U.S. only)

f. (408) 848.5429

[www.syngentafhg.com](http://www.syngentafhg.com)

COVER PHOTO: Sunfinity™ Yellow Dark Center Sunflower

All photos are the property of Syngenta unless otherwise noted.

© 2017 Syngenta. Some or all of the varieties listed herein may be protected under one or more of the following: Plant Variety Protection, United States Plant Patents, Utility Patents, and/or Plant Breeders' Rights and may not be propagated or reproduced without authorization. Syngenta is licensed to sell the liner contained in Kwik Kombos™ products under Dümmer's U.S. Patent No. 7.891.134. Trademarks used herein are trademarks of a Syngenta Group Company or their respective third party owners.